

# Moody Centre Station Transit-Oriented Area

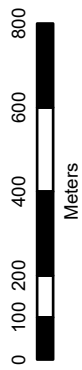
## LEGEND

**Transit Station**  
Transit Station Area



**Transit-Oriented Area Tiers**

- Tier 1 (up to 200m)
- Tier 2 (more than 200m and up to 400m)
- Tier 3 (more than 400m and up to 800m)



SCALE: 1:18,000

Date Created: XXXX  
Map Projection: UTM Nad1983  
Prepared By: Planning & Development  
Source: City of Coquitlam

# SCHEDULE "E" TO BYLAW 5393, 2024

