



Division of Airtex Manufacturing Partnership

**British Columbia Sales**

Phone: (604) 736-2420

303 - 8988 Fraserton Court

Fax: (604) 736-3197

Burnaby, BC V5J 5H8 e-mail: [vancouver@engineeredair.com](mailto:vancouver@engineeredair.com)

Project: Dogwood Pavilion, 1655 Winslow Ave

Engineer: AME Group – Vancouver

Contractor: City of Coquitlam (contractor T.B.D)

- (1) DJE20/O/R

PRELIMINARY SHOP DRAWING – SUBJECT TO CHANGE

FOR YOUR APPROVAL



# PRODUCT INFORMATION FORM(PIF)

JOB NAME Dogwood Pavilion - 1655 Winslow Ave. DIV. NO. EN08-24-00046 DATE Aug 13, 2024  
 CONTRACTOR \_\_\_\_\_ JOB NO. \_\_\_\_\_ SALES Ahmed Ahmed  
 UNIT MODEL DJE20/O/R NO. OF UNITS 1 UNIT TAG(S) RTU-1  
 APPROVAL CETL(Std.) POWER SUPPLY 208 / 3 / 60 UNIT AMBIENT 0°F  SEA LEVEL  HIGH ALTITUDE

MOUNTING: Outdoor Base mounted. CURB: 12" Existing seismic Roof Curb  
By EngA  EXT. ISOLATION  42" SERVICE PLATFORM  
 OPENING: DISCHARGE AIR Down RETURN AIR Bottom OUTSIDE AIR Back c/w  HOOD  LOUVRE  
 EXHAUST AIR \_\_\_\_\_ c/w  HOOD  LOUVRE  GRAVITY  MOTORIZED

SUPPLY AIR VOLUME 2,000 SCFM ESP 0.4 "WC BLOWER ACCESS:  RHS  LHS  
 TYPE FC DIDW SIZE 10/10 QUANTITY 1 SCREEN:  INLET  OUTLET  
 MOTOR: Super 'E' ODP HP 1 ESTIMATE TSP 1.27 "WC  
 ISOLATION Rubber in shear  INERTIA BASE DETAIL \_\_\_\_\_  
 BEARINGS: Pillow Block EXT LUBE LINES:  NONE  TO ACCESS SIDE  BOTH TO CASING  
 DRIVES: Standard DRIVE SAFETY 1 BELT GUARD:  STANDARD  OSHA  
 V.A.V.:  NONE

CONSTRUCTION: Standard  SPLIT (REASON) \_\_\_\_\_ CRITICAL DIM. \_\_\_\_\_  
 CASING: 18 GA (Std) INSULATION: 1 Inch 1.5 LB/CU FT  
 FLOOR:  18 GA (Std)  
 LINER:  NONE  
 PAINT FINISH: EXTERIOR:  ELECTROSTATICALLY APPLIED ALKYD ENAMEL IN ALUMINUM GRAY COLOR, LEVEL 1 - 500 HR \_\_\_\_\_  
 ACCESS DOORS: AIRSIDE: Hinged c/w Lever Handle c/w  LOCKABLE  WINDOWS OTHER \_\_\_\_\_  
 SERVICE(Elec./Gas/Comp(s)): Hinged c/w Lever handle c/w  LOCKABLE  WINDOWS OTHER \_\_\_\_\_  
 HOODS:  STANDARD  MUSHROOM ENGA LOUVRE:  STEEL  ALUM.  DRAINABLE OTHER \_\_\_\_\_  
 DAMPERS:  PARALLEL BLADE  STD. SEAL  ENGA LOCATION: All dampers  
 AIR MIXERS:  NONE DRIVE ROD TERMINATION:  INSIDE  THRU CASING  
 PIPING VESTIBULE:  NONE SERVICE CORRIDOR:  NONE  
 HUMIDIFIER:  NONE  
 DRAIN PAN:  NONE

FILTER: FILTER  ANGLE  FLAT SPARE SETS QTY: \_\_\_\_\_ TYPE DAFCO Merv 8 Pleated - 2"  
 SIDE LOAD  FACE LOAD  HOOD  METAL FRAME  FILTER GAUGE  
 P32 Signal to BMS  P32 Signal to Remote Panel

GAS HEAT (DJE-20) HEAT EXCHANGER MATERIAL: Stainless Steel  Single Wall Uninsulated Vent  DRAFT HOOD  SIDE WALL VENTOR  
 FUEL:  NAT. GAS  PROPANE PRESSURE 7 "W.C MANIFOLD:  STANDARD  F.M.  GAP  
 TEMP. RISE 74 °F BTUH IN 200,000 BTUH OUT 160,000 TURNDOWN 15 : 1

COILS FLUID HEATING  NONE STEAM HEATING  NONE ELECTRIC HEAT  NONE FLUID COOLING  NONE DX COOLING  NONE

HEAT RECOVERY:  NONE

MAIN POWER DISCONNECT Non Fused - Type A Disconnect By EngA

CONVENIENCE CIRCUITS  NONE

REMOTE CONTROL PANEL  NONE

THERMOSTAT AND SUBBASE DESC. New room mounted stat - shipped loose



# PRODUCT INFORMATION FORM(PIF)

JOB NAME Dogwood Pavilion - 1655 Winslow Ave. DIV. NO. EN08-24-00046 DATE Aug 13, 2024  
 UNIT MODEL DJE20/O/R NO. OF UNITS 1 UNIT TAG(S) RTU-1

**UNIT FUNCTION:**

Unit mounted non-fused disconnect switch 'on', service switch 'on', fire alarm contacts (by others) 'closed' (jumper if not required).

Unit on/off contact (by others) 'closed', outside air damper opens. Blower will delay on and run continuously at 100% R/A. The NEXTGEN BASE controller, with an internal setpoint of 70°F (21.1°C), will modulate heating to maintain the required discharge air temperature. Room sensor/setpoint (new stat) will reset the discharge air temperature between 50°F (10°C) to 100°F (37.8°C) to satisfy room setpoint requirements.

Exhaust fan interlock (by others) 'closed', damper open to 100% O/A.

**HEAT MODE**

Summer/winter switch (unit mounted) 'winter'. NEXTGEN BASE controller will begin modulating the gas heating. The discharge air temperature control band is from 50°F (10°C) to 100°F (37.8°C).

Unit on/off contact (by others) 'open', outside air dampers close, and blower shuts down. Unit is off.

If the fire alarm contacts 'open', equipment operation is disabled immediately.

If the discharge air temperature falls below 40°F (4.4°C), the NEXTGEN BASE will shut down the blower, close dampers and indicate alarm.

Note - Refer to manuals shipped with unit for more detailed explanation of maintenance, components and controls.

Note - Go to <http://www.engineeredair.com/index.php/manuals/> for online manual details

**MISCELLANEOUS COMMENTS:**

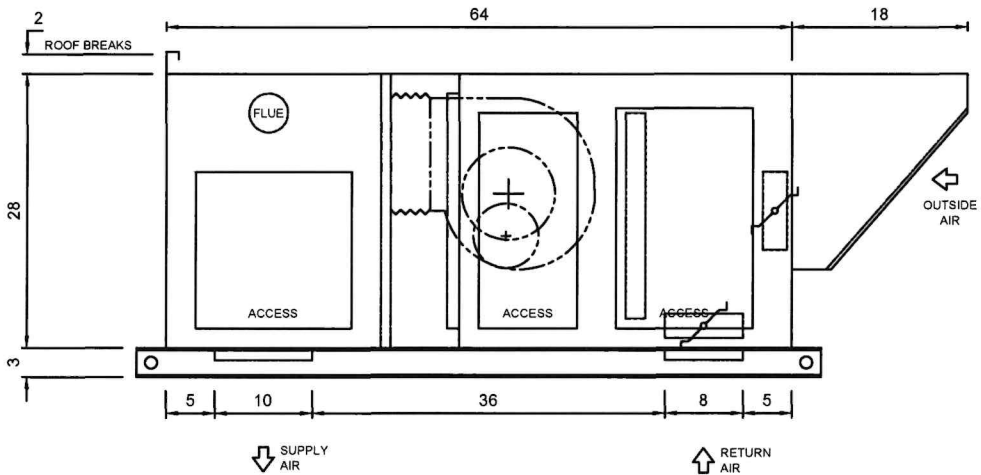
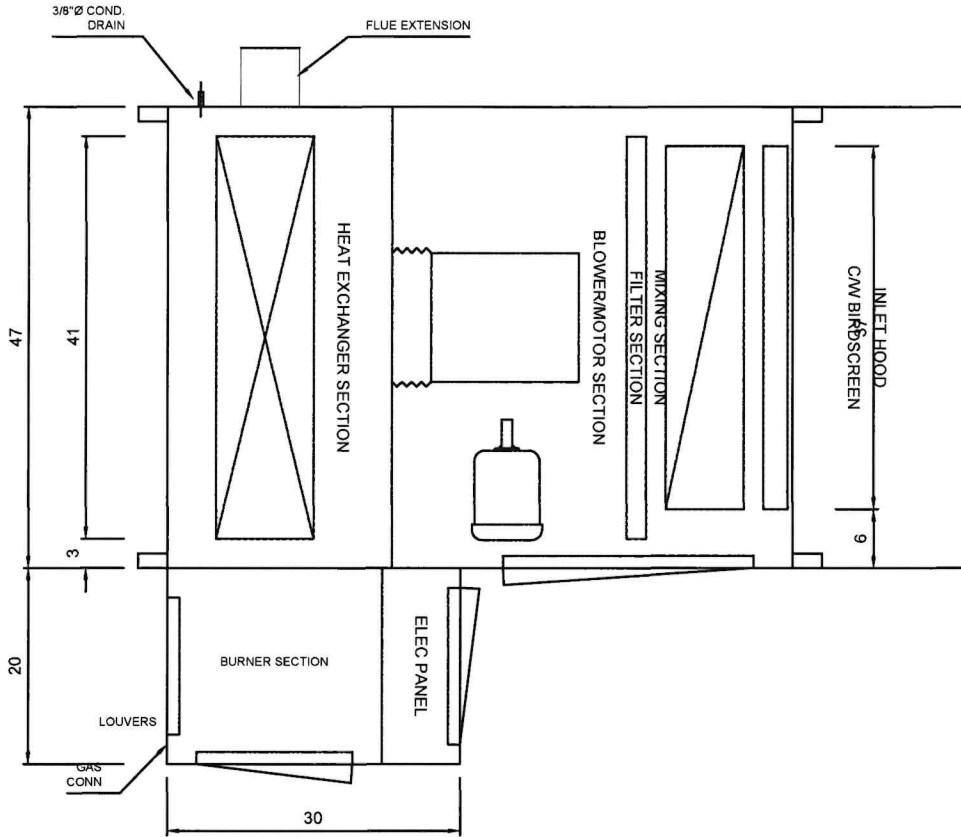
- Existing job#42807 Tag: RTU-1

- new unit to sit on existing curb for ease of installation

- New unit weight is 1,200 (subject to change)

- New roomstat will be shipped loose with the unit

- New unit will come with seismic tabs and flue extension



ESTIMATED Total unit Weight = 1,200 lbs (SUBJECT TO CHANGE)

DOOR SIZES AND INTERNAL COMPONENTS ARE APPROX. VALUES. DIMENSIONS SHOWN IN INCHES ONLY UNLESS OTHERWISE NOTED.

Dogwood Pavilion - 1655 Winslow Ave  
TAG: RTU-1

PRELIMINARY DRAWING ONLY - NOT FOR CONSTRUCTION. DJE20/O/R



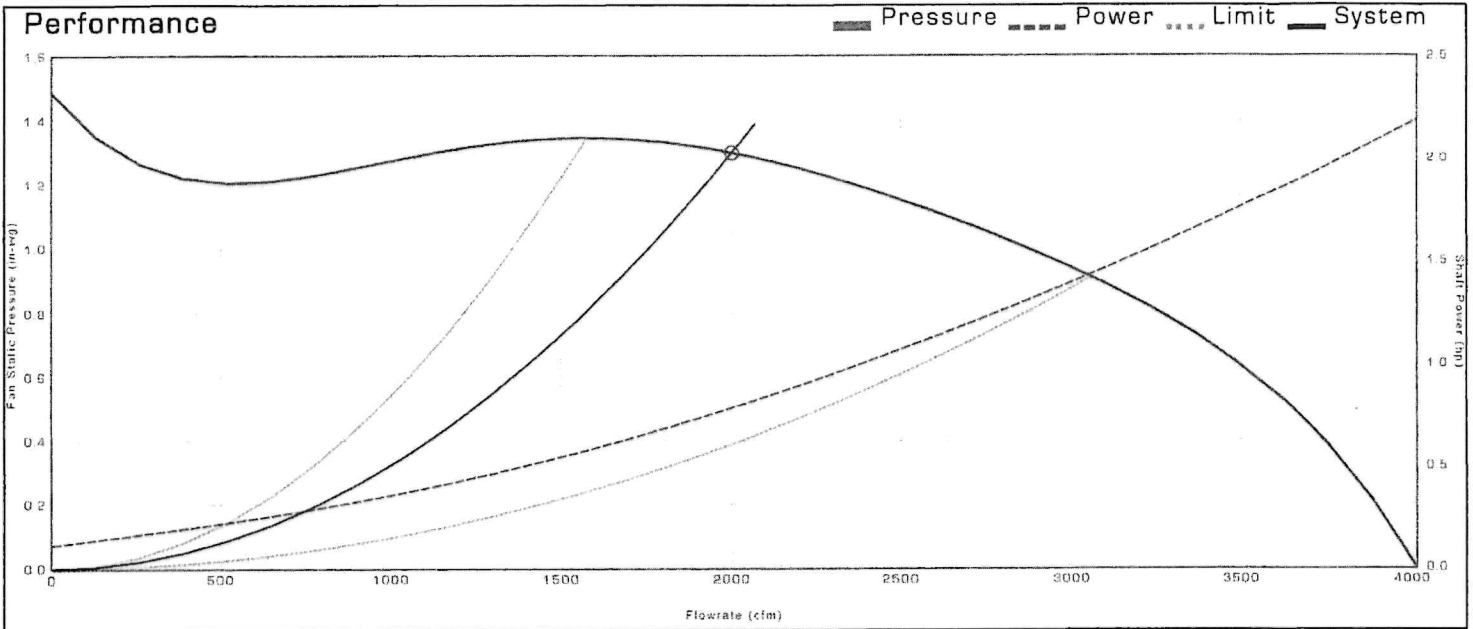
generated by ProUnit

REVISIONS:			
DATE:	DRWN BY:	CHKD BY:	DRWG NO.:
AUG 08 2024	AMA	-	AME

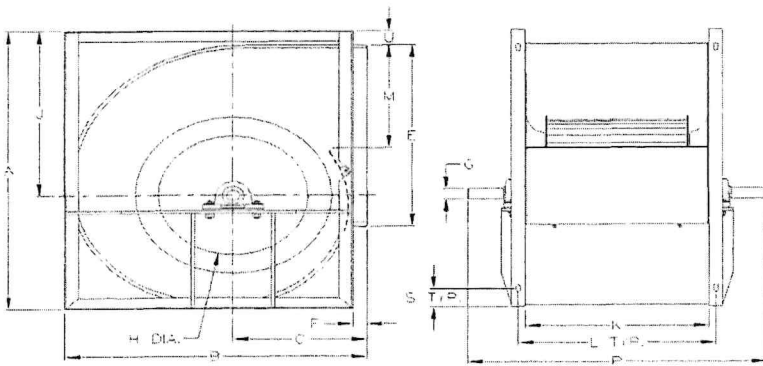


Date 8-8-2024

Job Name					Submitted by/notes				
Model A10-10A	Flow 2000 cfm	Pressure 1.30 in-wg	Temperature 70 °F	Altitude 19 ft	Density 0.075 lb/ft <sup>3</sup>	Q Derate 0 cfm	P Derate 0.00 in-wg	Vav Set Point 0.00 in-wg	
Fan Tag	Flow 2000 cfm	Pressure 1.30 in-wg	Power 0.78 hp	Static Efficiency 52.2 %	Total Efficiency 61.8 %	Speed 1114 rpm	Outlet Velocity 1961 fpm	FEI 1.29	
	Impeller Dia 10.0 in	Outlet Area 1.02 ft <sup>2</sup>	Max. Speed 1934 rpm	AMCA Class 0	Drive Belt Drive	Blades 48	P Volume 3.87 ft <sup>3</sup>	TurnDown 100 %	



Sound(Lwi)	63	125	250	500	1000	2000	4000	8000	Lw	LwA
	80	78	75	73	74	70	69	66	84	78



DIMENSIONS ARE SHOWN FOR REFERENCE ONLY.

**Options Available**

- Available Bore (9 inch diameter wheels): 3/4, 1, 1-3/16, 1-7/16, 1-11/16, 1-15/16, 2-1/4, 3 inch
- Available Bore (11 inch diameter wheels): 3/4, 1 and 1-3/16 inch
- Additional Bores (12 inch diameter wheels): 3, 4, and 4-1/2 inch
- Additional Bores (15 through 20 inch diameter wheels): 3, 4, 4-1/2, 5 inch
- Center disc lock style: Preslok
- Adjustable motor base

A	B	C	E	F	G	H	J	K	L	M	P	S	U
18.62	16.81	7.94	11.38	1.00	0.75	8.81	10.69	13.12	14.88	7.00	21.38	1.00	1.00

Dimensions in inches

Notes: Airflow performance data are obtained in accordance with AMCA 210-16. Installed performance will vary depending on extent of cabinet geometry.

Sound data are estimated from industry experience for the type of product selected. Data should be used for comparison purposes only and do not represent installed values.

These products are approved for use in California in exempted equipment (functions other than solely air moving) or where the fan energy is included in the performance rating of regulated equipment. See California Code of Regulations Title 20, Sections 1601-1609 for regulated fan information.

