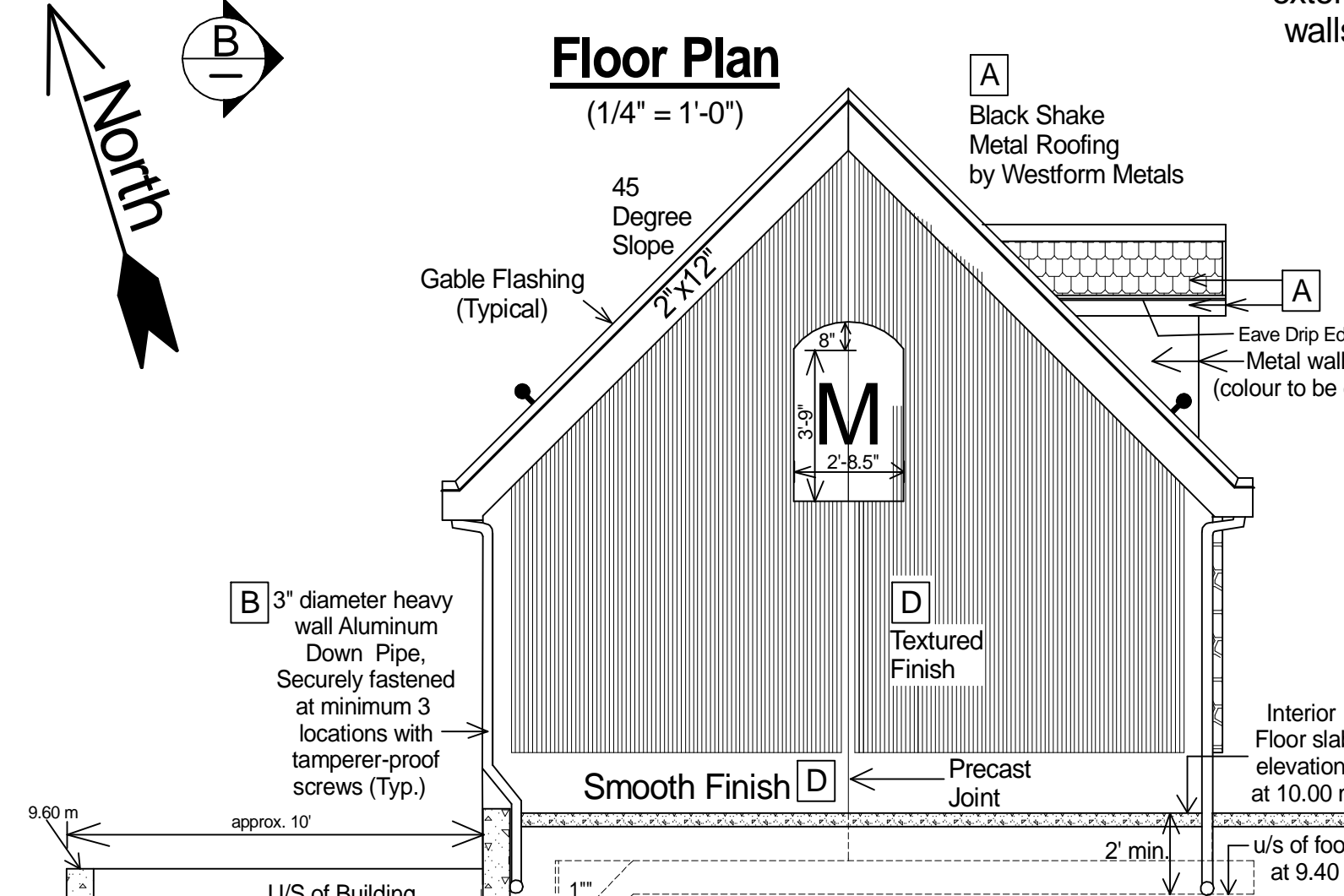
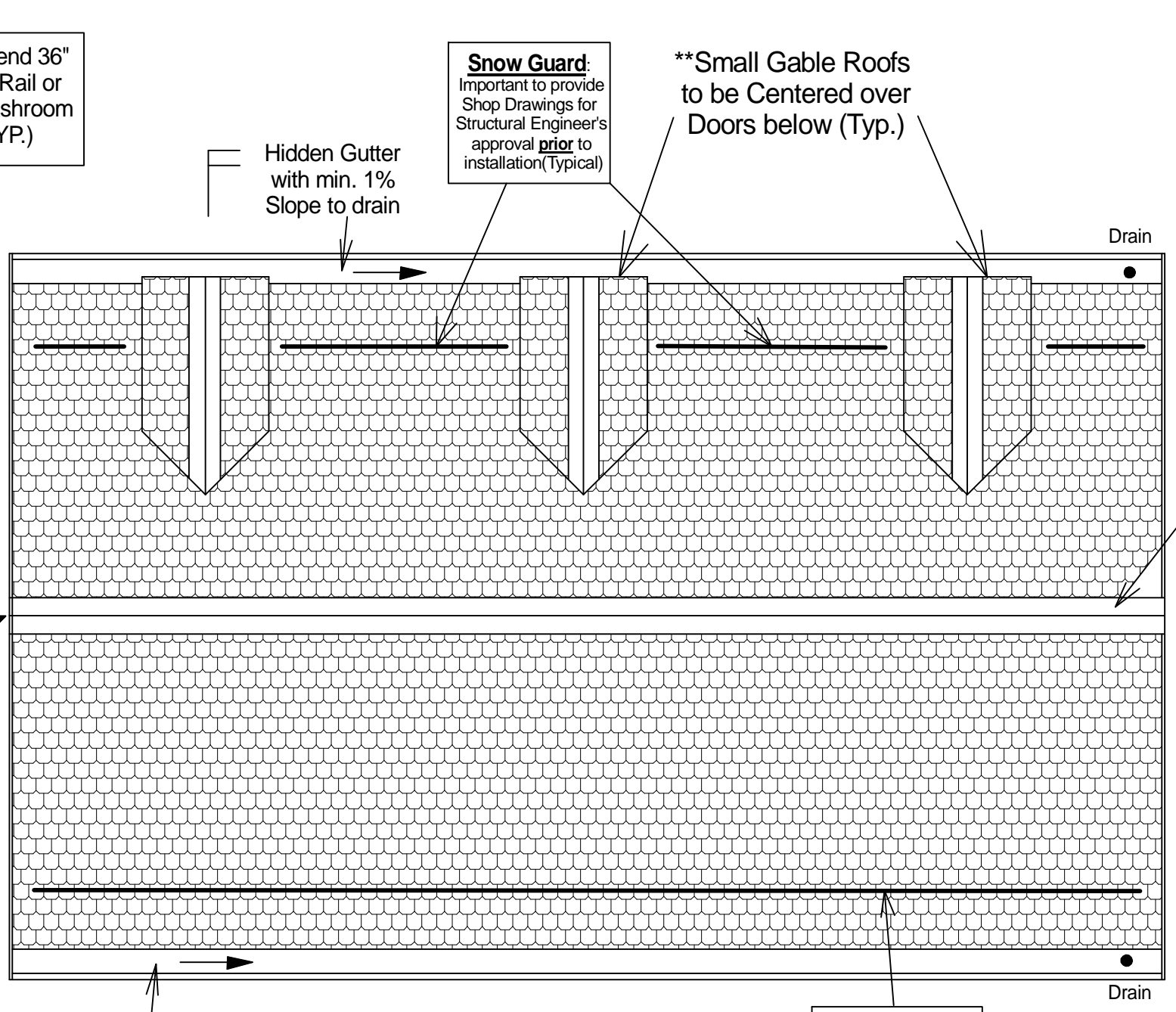


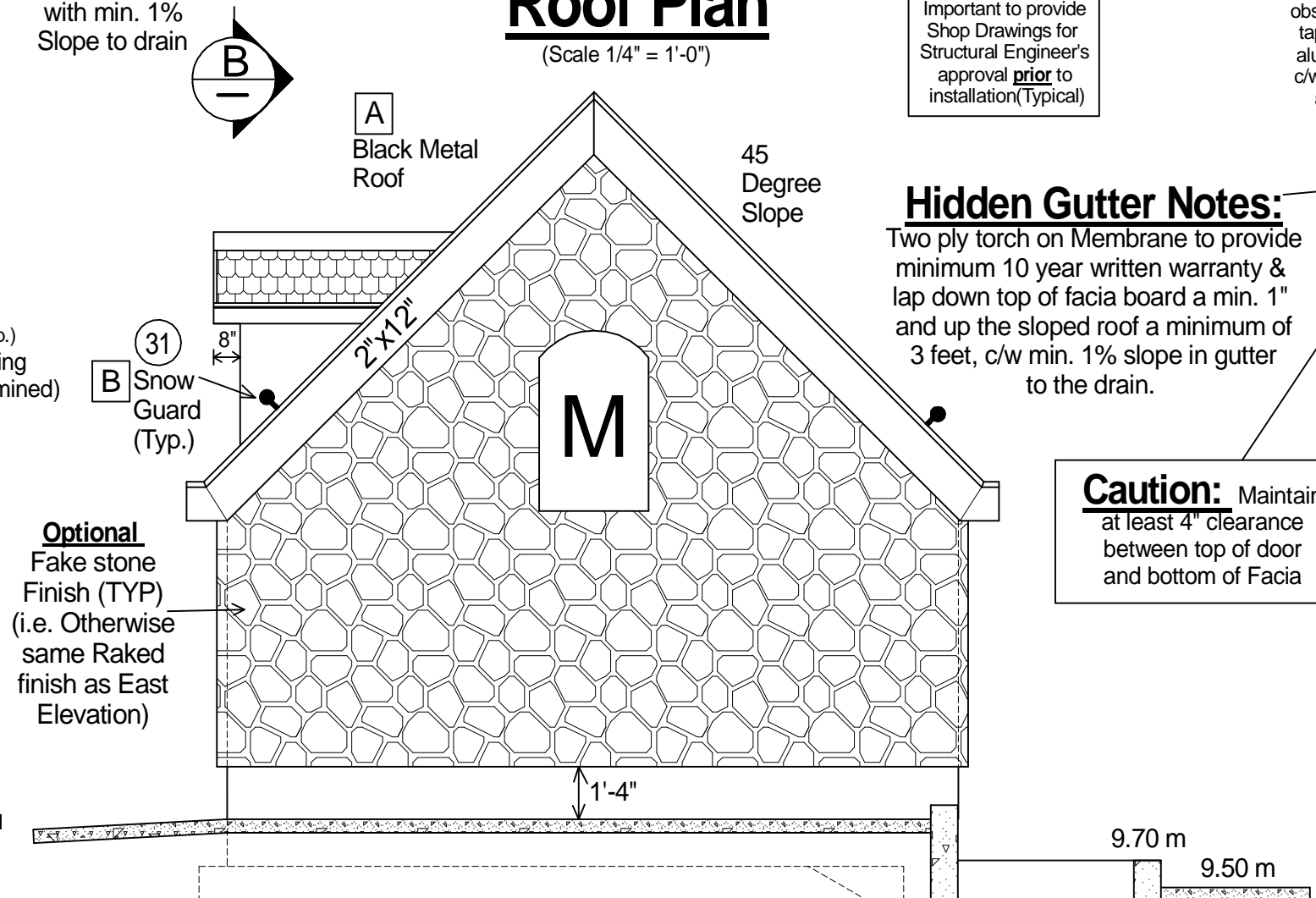
Floor Plan
(1/4" = 1'-0")



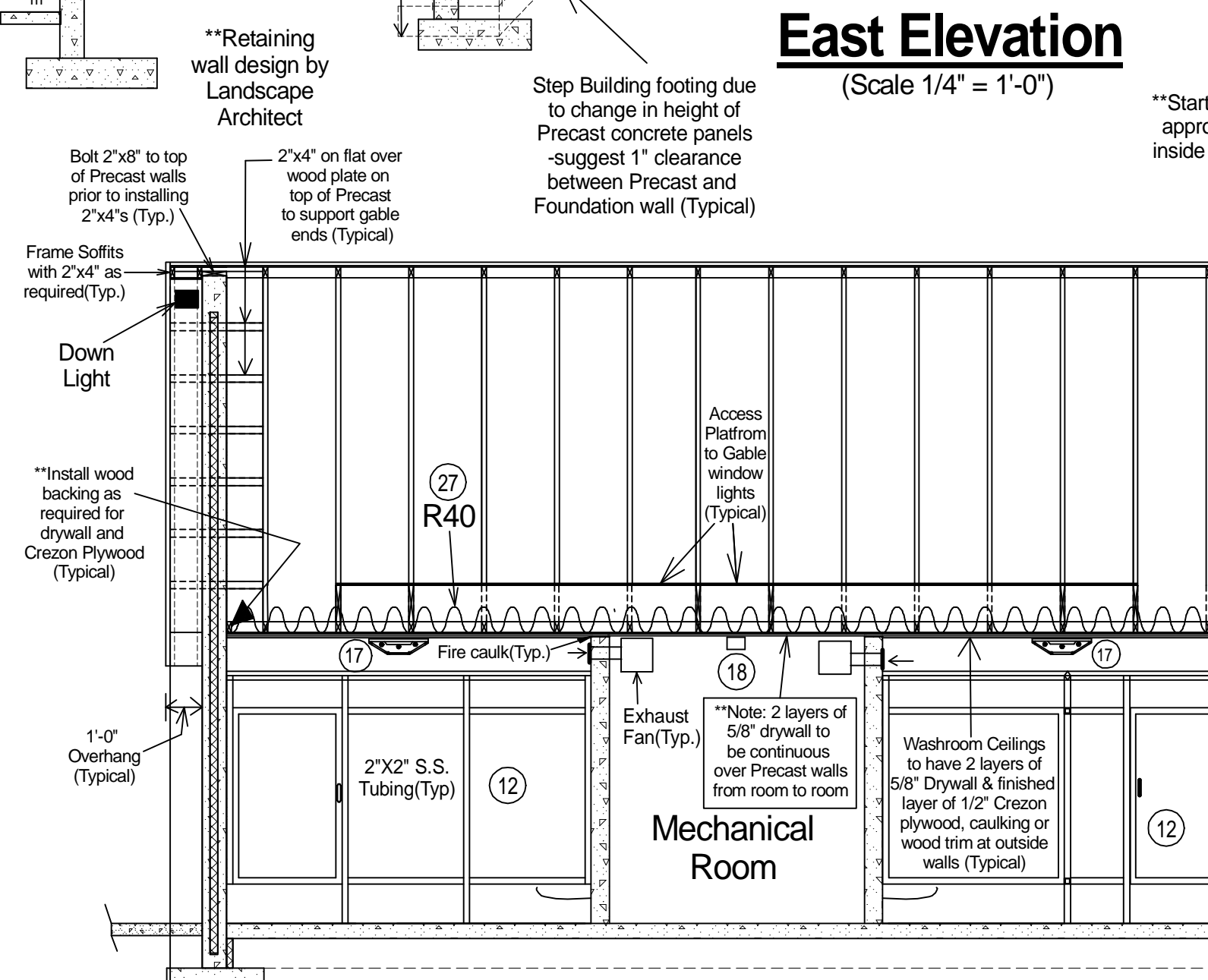
East Elevation
(Scale 1/4" = 1'-0")



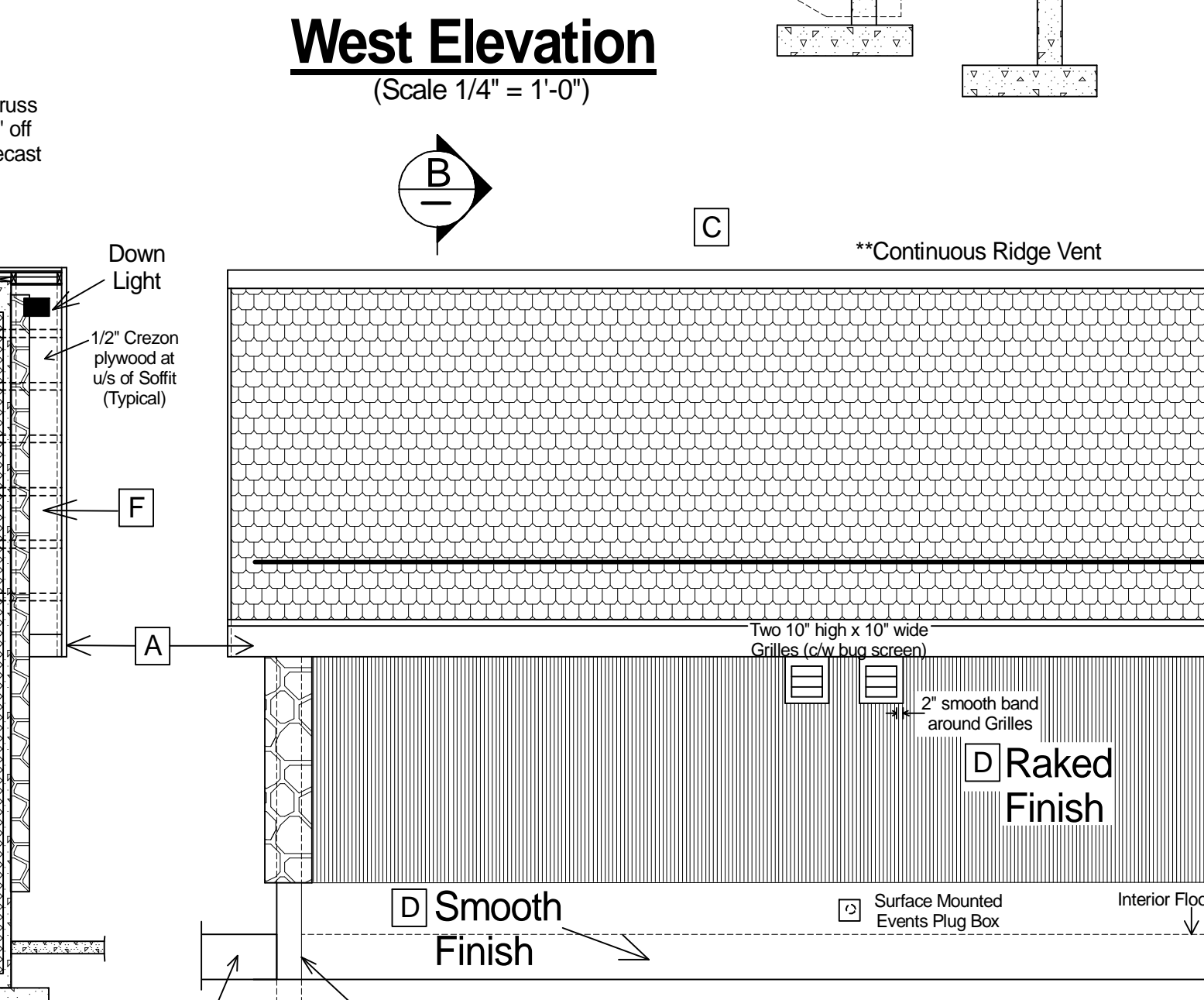
Roof Plan
(Scale 1/4" = 1'-0")



West Elevation
(Scale 1/4" = 1'-0")



Section A
(Scale 1/4" = 1'-0")



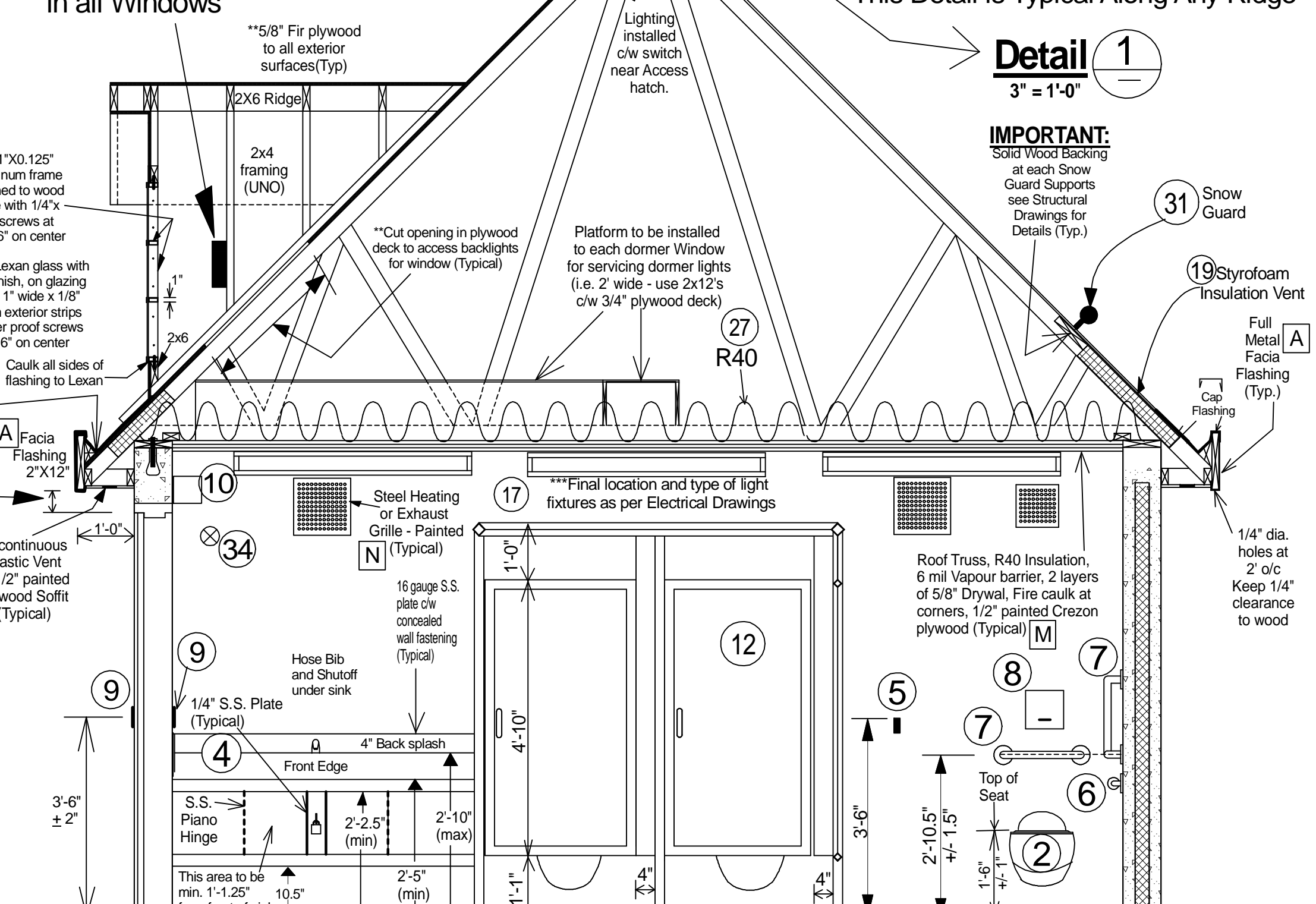
Section B
(Scale 1/2" = 1'-0")



South Elevation
(Scale 1/4" = 1'-0")

Finishing Schedule No.	Location	Type	Manufacturer or Supplier	Specifications
Exterior				
1	Facia and Trim Boards	Wood Flashing to Cover all Exposed wood areas	Kybur 588 Finish (i.e. non-ferrous), Standard Colour	Colour to be Selected by Parks Department
2	Roof Down pipe and Gutter	Painted Galvalume	Painted Galvalume	Colour to be Selected by Parks Department
3	Roofing and associated Flashing	Prepared by manufacturer	Kybur 588 Insulac (non-ferrous), Standard Colour	Colour to be Selected by Parks Department
4	Precast Concrete walls to receive 2 coats of paint as the present Plan	OC to Allow for two coat finish coats of Exterior Acrylic Latex Low Luster	Water Primer, Waterbased Exterior Latex Acrylic Low Luster	Colour to be Selected by Parks Department
5	Roof and Frames	Prime + plus 2 coats, Exterior Acrylic Latex, Non-slip	Acrylic Latex, Non-slip	Colour to be Selected by Parks Department
Interior				
6	Wall (Green Plywood) & Joist	Prime (Dull/Flat) plus 2 coats	Colour to be Selected by Parks Department	
7	Precast Concrete walls	Prime + plus 2 coats, Exterior Acrylic Latex, Low Luster	Water Primer, Waterbased Exterior Latex, Low Luster	Colour to be Selected by Parks Department
8	All Floors at Public Areas	epoxy c/w non-slip finish	epoxy c/w non-slip finish	Colour to be Selected by Parks Department

Back Lights req'd in all Windows



North Elevation
(Scale 1/4" = 1'-0")

General Notes

- Floor Drain c/w trap primer
- Acorn - Dura-vane 2100 Series - Blowout Jet Toilet c/w Trim & flush valve (Supplied by City) Install by G.C.
- Kindred Commercial Urinal Model No. CMP4538 c/w Trim & Flush valve (Supplied by City) Install by G.C.
- H/C S.S. sink and counter, Supplied by Action Stainless 778-298-2927 Delta Faucet model number 591T-1250 supplied by City & installed by G.C.
- Coat Hook, mounted 1,200 mm A.F.F., project max. 2' Kruer JBT Jr Toilet Paper dispenser, #09635 by G.C.
- 1.25" Dia H/C Grab Bars - One at 24" plus 24" at 120 degree & One at 2'-0" Long Grab located behind Toilet
- Auto-matic Flush Valve, supply by City, install by GC
- Vandal Proof Push Button for Automatic Door Opener, Hunter HA-8 Low energy Auto Door Opener c/w vandal proofing activation buttons (S. & I. by City)
- 4" thick Precast Concrete Screen
- Stainless Steel Toilet Partitions, Preferred supplier ActionStainless (Kyle at 778-298-2927) S&I by City.
- Concrete slab sloped 1 to 1.5% to Drain, acid wash before painting, see paint specifications
- 36" door x 7'-0" (16 ga) metal door and 6.75" wide x 14 ga/frame c/w h.d. dead bolt, push plate & kicks See Specifications (supply by City, install by G.C.)
- Surface mounted Hand Dryer, Frost Products Ltd. Model # 1190, 120Volt - 2400 watts.
- Wall mounted rubber door bumper, glue and anchor
- 3 tube "Fail-Safe" Light Fixture, (c/w motion sensor swit.) FCT-T-232-120V-80/84-UB81-T8 bulbs.
- Ceiling mounted light, centered in Mechanical room, c/w wall switch.
- Approved Insulation Vent
- Flush Pull, #1111A 630, (supply by City, install by G.C.)
- Commercial Grade Door sweep & Weather-stripping (supply by City, install by G.C.)
- Occupancy sensor and Guard (see Electrical Dwg's for final detail and location)
- 3/4" fire rated plywood, raise 4" off floor, full width & Ht.
- 3" Square, Heavy wall Aluminum downpipe - Powder coated (securely fasten to building) min. 3 locations
- 1/4" x 8" Aluminum Guard Plate. Bolted to door with 5/16" Stainless Steel Carriage Bolts, as shown c/w tamper proof nuts on inside of door. Heavy Duty Dead Bolt protectors to be Supplied and installed by G.C., & then install Aluminum Guard within 1/8" to Wall etc.
- 2" thick Blue Polystyrene at Foundation walls
- R40 Fibre Glass Insulation
- Industrial grade Mop Sink and Taps (fasten securely to concrete wall) plus min. 6 gal. electric HWT suspended from Concrete wall (min. 6'-8" ht. clearance)
- Base board heater, (see Mech and Elect. Drawings)
- Electrical Panel, see Electrical Dwg's for size etc.
- Snow Guards, see Structural Drawings for details
- Water line water meter and backflow device etc as shown on Mechanical Drawing
- Frost Free Hose bib

Elevations, Plans, Sections & Details

No.	Revision/Issue	Date
3	Issued for Construction	Jul 16/12
2	Issued for Construction	Jun 28/12
1	Issued for Pricing Review	May 22/12
0	Issued for Building Permit	Apr 14/12
P5	Issued to Parks Deptart.	Apr. 4/12

Firm Name and Address
Forum Projects Ltd.
 Box 32120 Walnut Grove P.O.
 Langley B.C. V1M - 2M3
 (604) - 888 - 6672 (o)
 (604) - 888 - 7857 (f)

Project Name and Address
Mackin Park Washrooms
 1046 Brunette Avenue
 Coquitlam B.C.

Project	Sheet
Date: February 2012	A1 Rev 3
Scale: As Noted	

Legal Description:
 Parcel ID 003-365-913
 Lot 17 DLS 45, 46 & 48
 Group 1 NWD Plan 63676