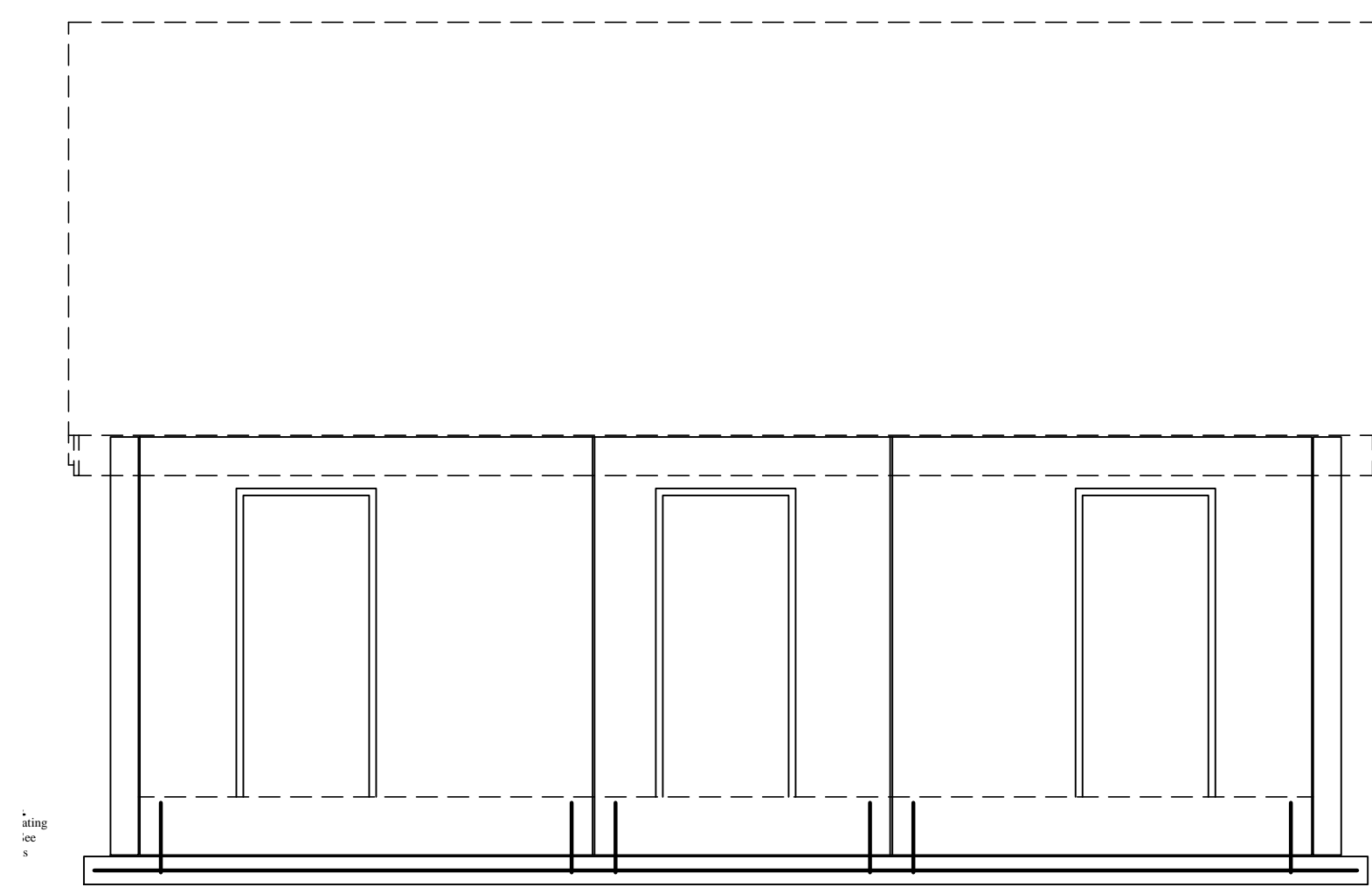
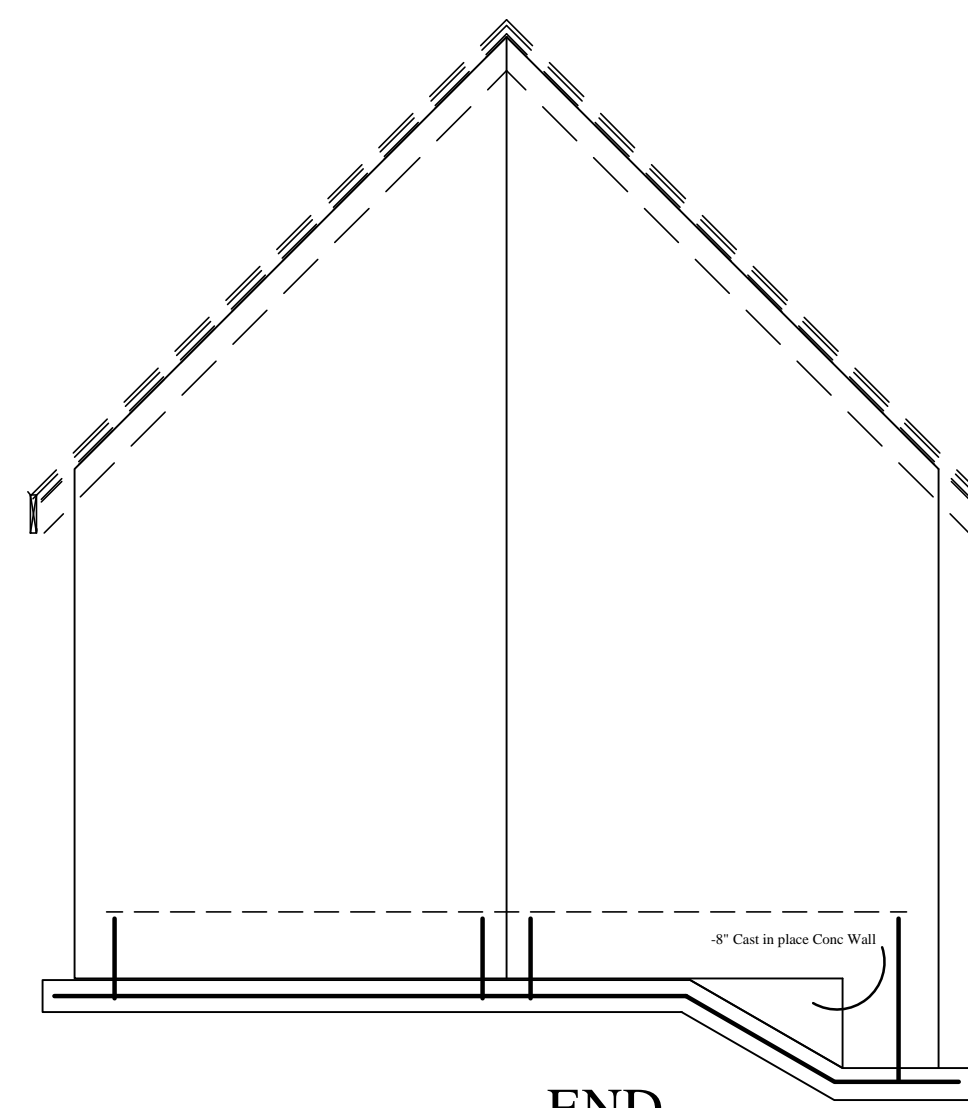


3  
1 INTERIOR WALLS and FOUNDATION  
SCALE: 1/2" = 1' 0"

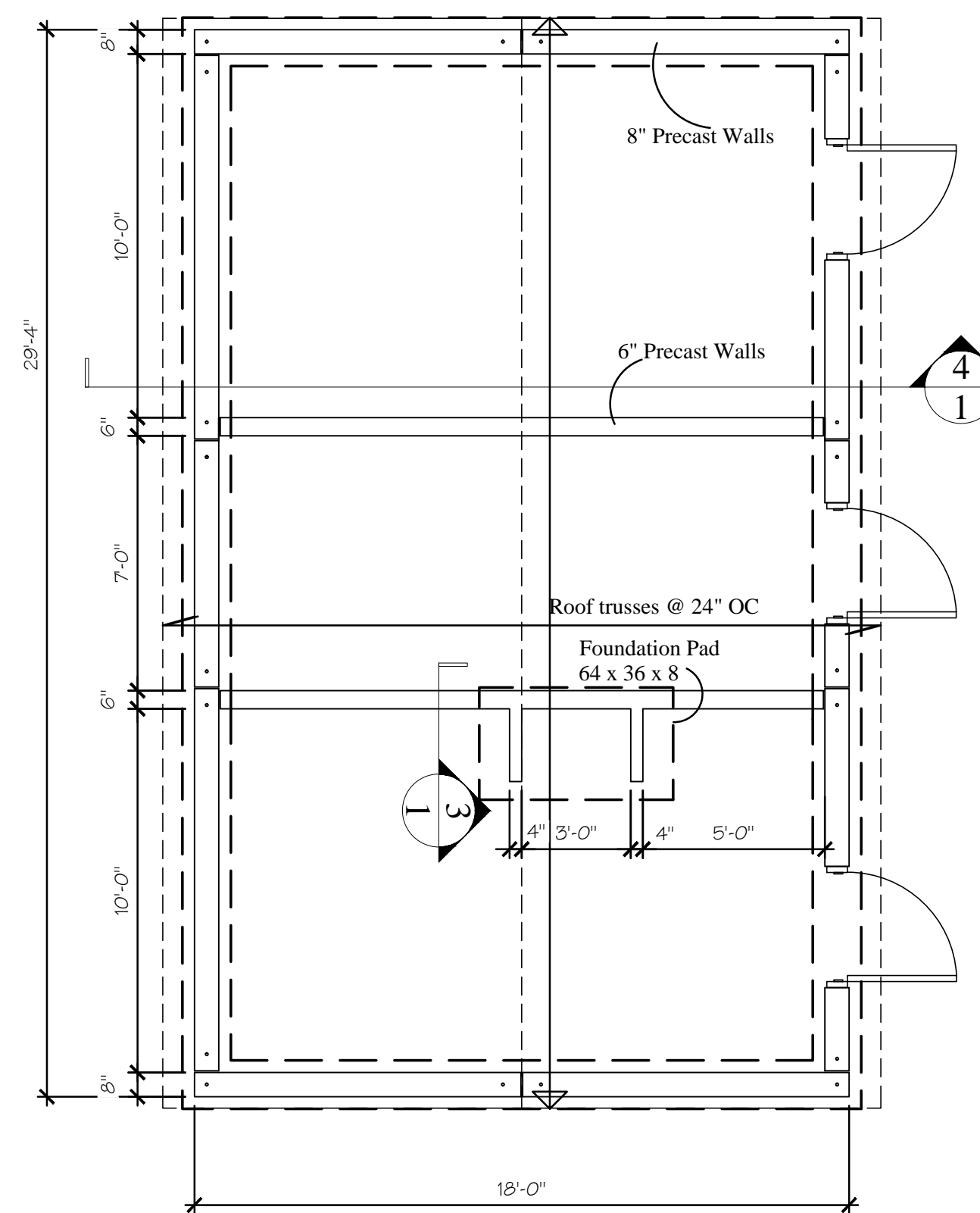
4  
1 EXTERIOR WALLS and FOUNDATION  
SCALE: 1/2" = 1' 0"



1  
1 FOUNDATION REINFORCING FRONT  
SCALE: 1/4" = 1' 0"



END



2  
1 FLOOR PLAN  
SCALE: 1/4" = 1' 0"

**KONTROL ENGINEERING LTD.**  
 1090 Augusta Ave., Burnaby, B.C. V5A 4V2  
 TEL. FAX 604 291 7434 CELL; 604 723 7534

**Engineer to receive at least 48 hours notice for inspections:**

- 1) After the reinforcement for the foundation works has been completed
- 2) After the roof framing works have been completed.

P Eng. Seal

**Structural Notes**  
**General:**

- 1) All works to conform to the latest edition of the B.C. Building Code 2006.
- 2) This drawing is to be read with
  - a) City of Coquitlam Standard Specifications and with
  - b) Forum Projects Ltd. Box 32120 Walnut Grove P.O. Langley B.C. V1M - 2M3 (604)-888-6672 (o) (604)-888-7857 (f) drawings for City of Surrey Parks, Recreation & Culture TE Scott Park Washroom -148th Street, Surrey
- 3) **Advance Precast Ltd 884 Stremel Rd, Kelowna, B.C. V1X 3E6 250-765-1431 (Ph) 250 765 6658 (Fax) Drawings for TE Scott Park Washroom -148th Street, Surrey**
- 4) DESIGN LOADS
 

a) S Allowable Soil Bearing Pressure	See Soils Report
b) Ground Snow Load	3.0 kPa
c) Rain Load	0.3 kPa
d) Wind Load	0.47 kPa
e) Seismic :	S(a) : 0.2 = 1.0 S(a): 0.5 = 0.69 S(a): 1.0 = 0.33 S(a): 2.0 = 0.17
	1. F(a) = 1.1 R(d) = 2.0 R(a) = 1.5

**Mackin Park Washroom Structural Details** [Issued for Construction June 1st 2012]  
 Civic: 1046 Brunette Ave. Coquitlam B.C.  
 S1 of 1