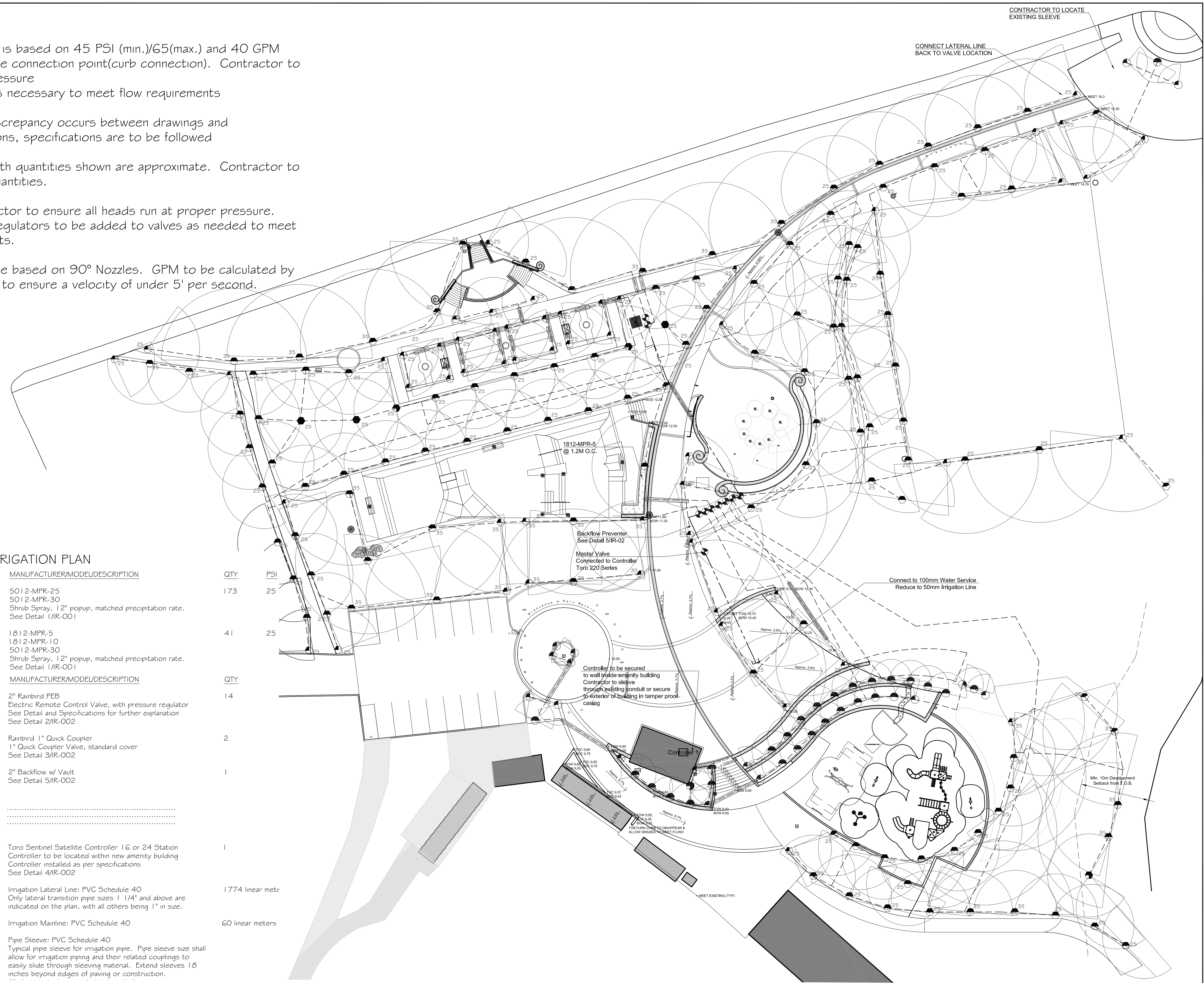


NOTES:

1. System is based on 45 PSI (min.)/65(max.) and 40 GPM (max.) at the connection point (curb connection). Contractor to provide pressure reducing as necessary to meet flow requirements
2. If a discrepancy occurs between drawings and specifications, specifications are to be followed
3. All length quantities shown are approximate. Contractor to verify all quantities.
4. Contractor to ensure all heads run at proper pressure. Pressure regulators to be added to valves as needed to meet requirements.
5. GPM are based on 90° Nozzles. GPM to be calculated by contractor to ensure a velocity of under 5' per second.

PHASE I: IRRIGATION PLAN

SYMBOL	MANUFACTURER/MODEL/DESCRIPTION	QTY	PSI
	#nozzle 5012-MPR-25 5012-MPR-30 Shrub Spray, 12" popup, matched precipitation rate. See Detail 1/IR-001	173	25
	#nozzle 1812-MPR-5 1812-MPR-10 5012-MPR-30 Shrub Spray, 12" popup, matched precipitation rate. See Detail 1/IR-001	41	25
	SYMBOL MANUFACTURER/MODEL/DESCRIPTION 2" Rainbird PEB Electric Remote Control Valve, with pressure regulator See Detail and Specifications for further explanation See Detail 2/IR-002	14	
	Rainbird 1" Quick Coupler 1" Quick Coupler Valve, standard cover See Detail 3/IR-002	2	
	2" Backflow w/ Vault See Detail 5/IR-002	1	
	Controller 1 Toro Sentinel Satellite Controller 16 or 24 Station Controller to be located within new amenity building Controller installed as per specifications See Detail 4/IR-002	1	
	----- Irrigation Lateral Line: PVC Schedule 40 Only lateral transition pipe sizes 1 1/4" and above are indicated on the plan, with all others being 1" in size.	1774 linear mete	
	----- Irrigation Mainline: PVC Schedule 40	60 linear meters	
	----- Pipe Sleeve: PVC Schedule 40 Typical pipe sleeve for irrigation pipe. Pipe sleeve size shall allow for irrigation piping and their related couplings to easily slide through sleeving material. Extend sleeves 18 inches beyond edges of paving or construction.		



van der Zalm + associates inc.
Landscape Architecture • Urban Design • Parks & Recreation
Suite 1, 8938 192 Street Surrey, British Columbia V4N 3W8
P 604.882.0024 F 604.882.0042 info@www.vdz.ca

CLIENT:
Coquitlam

SUB-CONSULTANTS:
BINNIE
NEWLINE SKATEPARKS
ALLEY GEOTECHNICAL
DMD

NOT FOR CONSTRUCTION

© Copyright reserved. This drawing and design is the property of van der Zalm + associates inc. and may not be reproduced or used for other projects without permission.

No.	Description	Date
8	Irrigation As Built	May 16, 2013
5	Issue for Construction	JUN 5, 2012
5	Issue for Tender	APR 18, 2012
5	Issue for Tender	MAR 19, 2012
4	100% Review	FEB. 20, 2012
3	75% Review	FEB. 4, 2012
2	25% Review	Dec 22 2011
1	Meeting Review	Dec 15 2011

REVISIONS-DRAWING ISSUE

CONTRACTOR SHALL CHECK ALL DIMENSIONS ON THE WORK AND REPORT ANY DISCREPANCY TO THE CONSULTANT BEFORE PROCEEDING. ALL DRAWINGS AND SPECIFICATIONS ARE THE EXCLUSIVE PROPERTY OF THE OWNER AND MUST BE RETURNED AT THE COMPLETION OF THE WORK.

PROJECT:
MACKIN PARK REVITALIZATION

LOCATION:
BRUNETTE AND KING EDWARD
COQUITLAM, BC

DRAWN	JL/RS
CHECKED	RC
APPROVED	MVDZ
SCALE	---
CAD FILE	IR-01 IRRIGATION PLAN 20130306.DWG
DATE	Dec. 21st, 2011

DRAWING TITLE: **IRRIGATION PLAN**

DRAWING NO.: **IR-01**

PROJECT NO.: **PR2011-14**