

SPANI POOL CONCESSION TENANT IMPROVEMENT

655 HILLCREST ST, COQUITLAM, BC V3J 3Z6

FAULKNERBROWNS ARCHITECTS

FaulknerBrowns Architecture Inc
204-1551 Johnston St
Vancouver BC Canada V6H 3R9

+1 (604) 282-4383
info@faulknerbrowns.com
faulknerbrowns.com



©Copyright reserved.
These drawings and the design contained therein at all times remain the exclusive property of FaulknerBrowns Architects Inc. Reproduction or publication by any method in whole or in part is prohibited without their written consent.
Do not scale this drawing.
Do not derive dimensions from digital media.



ELECTRICAL SYMBOL LEGEND					
LIGHTING	POWER	FIRE ALARM	COMMUNICATIONS	SINGLE LINE	SECURITY
EMERGENCY LUMINAIRE	SPECIAL RECEPTACLE (AS NOTED)	SMOKE DETECTOR	TELEPHONE OUTLET	FEEDER/CONDUCTOR	PERIMETER DOOR ALARM
SURFACE MOUNTED LUMINAIRE	DUPLEX RECEPTACLE	DUCT MOUNTED SMOKE DETECTOR	FLOOR MOUNTED TELEPHONE OUTLET	BUSBAR/CDP	SPECIAL PERIMETER DOOR ALARM
CEILING RECESSED LUMINAIRE	FRIDGE RECEPTACLE	120V SMOKE ALARM C/W BATTERY BACKUP	PAY TELEPHONE OUTLET	POWER CIRCUIT BREAKER (VACUUM OR SF6)	CCTV
CEILING SUSPENDED LINEAR LUMINAIRE	WASHER RECEPTACLE	THERMAL DETECTOR	CATV OUTLET	DRAW OUT BREAKER	CCTV - ALTERNATE
STRIP LIGHT	DISHWASHER RECEPTACLE	DUCT MOUNTED SMOKE DETECTOR	FLOOR MOUNTED CATV OUTLET	BREAKER	CCTV - RECORDING
SURFACE MOUNTED LUMINAIRE	DRYER RECEPTACLE (14-30R)	FIRE ALARM PIEZO	CEILING MOUNTED CATV OUTLET	KEY INTERLOCK SWITCH	MAGNETIC DOOR HOLD OPEN
RECESSED DOWN LIGHT	RANGE RECEPTACLE (14-50R)	PIEZO SILENCE SWITCH	COMBINATION COAXIAL/RJ45 OUTLET	GANG OPERATED LOAD BREAK SWITCH	DOOR CONTACT
WALL MOUNTED DOWN LIGHT	FOUR PLEX RECEPTACLE	FIRE ALARM HORN (W/STROBE)	COMBINATION TELEPHONE AND DATA OUTLET WALL	MOTORIZED GANG OPERATED LOAD BREAK SWITCH	CARD READER
RECESSED STEP LIGHT	ABOVE COUNTER DUPLEX RECEPTACLE	FIRE ALARM PULL STATION	COMBINATION TELEPHONE AND DATA OUTLET ABOVE COUNTER	GANG OPERATED DISCONNECT SWITCH	ELECTRIC STRIKE
PENDANT LUMINAIRE	ABOVE COUNTER FOUR PLEX RECEPTACLE	FIRE ALARM BELL	COMBINATION TELEPHONE AND DATA OUTLET CEILING	FUSE	KEY PAD
UNDER CUPBOARD STRIP/PUCK LIGHT	5-20R FOUR PLEX RECEPTACLE (T-SLOT)	FIRE ALARM GONG	WIRELESS GATEWAY	RELAY	REQUEST TO EXIT SENSOR
TRACK	5-20R DUPLEX RECEPTACLE (T-SLOT)	FIRE ALARM GONG W/STROBE	COMBINATION TELEPHONE AND DATA OUTLET FLOOR	NORMALLY OPEN CONTACT	MORTISE LOCK
TRACK HEAD	ABOVE COUNTER 5-20R DUPLEX RECEPTACLE (T-SLOT)	FIRE ALARM HORN	WIREMOLD MOUNTED DATA/TEL	NORMALLY CLOSE CONTACT	SALTO X54 WIRELESS LOCK
SPOT LIGHT	1/2 SWITCHED DUPLEX RECEPTACLE	FIRE ALARM STROBE	WIREMOLD MOUNTED TEL OUTLET	CABLE POTHEAD	R.F RECEIVER
POLE LUMINAIRE	SPLIT DUPLEX RECEPTACLE	FIRE ALARM REMOTE TROUBLE	WIREMOLD MOUNTED TV OUTLET	LIGHTNING ARRESTER	GLASS BREAK DETECTOR
TWO HEAD POLE LUMINAIRE	ABOVE COUNTER SPLIT DUPLEX RECEPTACLE	FIREFIGHTERS TELEPHONE	COMBINATION OUTLET	GROUND	SECURITY SYSTEM ELECTRIC STRIKE
BOLLARD	ISOLATED GROUND DUPLEX RECEPTACLE	CEILING MOUNTED FIRE ALARM SPEAKER	VOLUME CONTROL	METERING TRANSFORMER	INTRUSION MOTION DETECTOR 180°
INGROUND LIGHTING	ISOLATED GROUND FOUR PLEX RECEPTACLE	WALL MOUNTED FIRE ALARM SPEAKER	VOLUME CONTROL STATION	SERVICE PROVIDER METER	INTRUSION MOTION DETECTOR 360°
SINGLE POLE TOGGLE SWITCH, GANGED AS SHOWN	GROUND FAULT INTERRUPTER DUPLEX RECEPTACLE	WALL MOUNTED FIRE ALARM SPEAKER/STROBE	INTERCOM OUTLET	DIGITAL METERING UNIT	INTRUSION MOTION DETECTOR WALL MOUNTED
LOW VOLTAGE SWITCH, GANGED AS SHOWN	GROUND FAULT INTERRUPTER FOUR PLEX RECEPTACLE	END OF LINE RESISTOR	FLOOR MOUNTED INTERCOM OUTLET	OVERCURRENT GROUND RELAY	INTRUSION ALARM HORN
THREE WAY TOGGLE SWITCH	ABOVE COUNTER GFCI DUPLEX RECEPTACLE	FIRE ALARM PANEL	CEILING MOUNTED SPEAKER	OVERCURRENT PHASE RELAY	VAULT ALARM PANEL
DUAL-TECH OCC. SENSOR C/W ON/OFF SWITCH, WALL MOUNTED	FLOOR MOUNTED DUPLEX RECEPTACLE	FIRE ALARM ANNUNCIATOR	WALL MOUNTED SPEAKER	TRANSFORMER (DRY TYPE)	INTRUSION ALARM ANNUNCIATOR
DUAL-TECH OCCUPANCY SENSOR, CEILING MOUNTED	FLOOR MOUNTED FOUR PLEX RECEPTACLE	SPRINKLER FLOW SWITCH	WALL MOUNTED SPEAKER	DELTA-WYE TRANSFORMER	INTRUSION ALARM KEY PAD
DAYLIGHT SENSOR, CEILING MOUNTED	CEILING MOUNTED DUPLEX RECEPTACLE	SPRINKLER TAMPERS	PUBLIC ADDRESS HORN	GENERATOR	INTRUSION ALARM CONTROL PANEL
DIMMER SWITCH	CEILING MOUNTED FOUR PLEX RECEPTACLE	SPRINKLER VALVE SUPERVISORY	PROJECTOR	TRANSFER SWITCH	
PHOTOCELL	SYSTEMS FURNITURE POWER WHIP CONNECTION	COMBINATION SMOKE/CO ALARM	BELL	LSIG LONG, SHORT, INSTANTANEOUS, & GROUND TRIP UNIT	ABBREVIATIONS
TIME CLOCK	SERVICE PAC POLE	CEILING MOUNTED FIRE ALARM SPEAKER/STROBE	BUZZER	FT FEED THROUGH	WP WEATHER PROOF
EXIT SIGN - ARROWS AS INDICATED	JUNCTION BOX	E-COMM EQUIPMENT	HORN	TD TIME DELAY	RI INDICATES ROUGH-IN ONLY
EXIT SIGN - SINGLE SIDED	MECHANICAL EQUIPMENT DIRECT CONNECTION	SUITE FAULT ISOLATOR	CLOCK OUTLET	LV LOW VOLTAGE LIGHTING RELAY CABINET	EV ELECTRIC VEHICLE
EMERGENCY BATTERY PACK	KITCHEN EQUIPMENT CONNECTION		COMMUNICATIONS SERVICE BOX	DN DOUBLE NEUTRAL	EVSE ELECTRIC VEHICLE SUPPLY EQUIPMENT
DUAL REMOTE EMERGENCY HEADS, CEILING MOUNTED	VARIABLE SPEED SWITCH		ECOMM EMERGENCY SYSTEM JUNCTION BOX OUTLET	PS PHASE SHIFT	EM INDICATES DEVICE ON EMERGENCY POWER
DUAL REMOTE EMERGENCY HEADS, WALL MOUNTED	THERMOSTAT				E EXISTING TO REMAIN
DUAL EMERGENCY HEADS COMPLETE WITH SELF CONTAINED BATTERY PACK, CEILING MOUNTED	BASEBOARD HEATER, WATTAGE AS NOTED ON PLANS				R REMOVE
DUAL EMERGENCY HEADS COMPLETE WITH SELF CONTAINED BATTERY PACK, WALL MOUNTED	FORCE FLOW HEATER				RE RELOCATE EXISTING
	MECHANICAL MOTOR CONNECTION				RR REMOVE AND RELOCATE
	DISCONNECT SWITCH				
	MAGNETIC STARTER				
	CONTACTOR				
	MANUAL STARTER				
	GROUND BUS				
	PANEL BOARD				
	CONDUIT RUN UP				
	CONDUIT RUN DOWN				
	PUSH BUTTON				
	EMERGENCY PUSH BUTTON				

***NOTE: NOT ALL SYMBOLS ARE USED.

DRAWING LIST	
DWG NO.	DESCRIPTION
E0.0	COVER PAGE, DRAWING LIST & SYMBOL LEGEND
E1.0	ELECTRICAL PLAN
E2.0	SCHEDULES & DETAILS
E3.0	ELECTRICAL SPECIFICATIONS

Electrical Power, Lighting, Other Equipment Design (Energy)	
British Columbia Building Code:	2024
Electrical Design:	
Energy Standard/Code:	ASHRAE 90.1-2019
Power Compliance Path:	Prescriptive
In accordance with:	Section 8 (Alterations)
Lighting Compliance Path:	Prescriptive
Lighting Design Method:	Space-by-Space Method
In accordance with:	Section 9 (Alterations)
Other Equipment Path:	N/A (no other equip. work)
In accordance with:	N/A

*THE DESIGN IS IN FULL COMPLIANCE WITH ASHRAE 90.1-2019.

#	Submission / Revision Issue	Issue Date
4	ISSUED FOR RFP	2024-10-04
3	ISSUED FOR DRAFT RFP REVIEW	2024-09-09
2	ISSUED FOR BP/HP	2024-08-26
1	ISSUED FOR REVIEW	2024-08-12

Client Name: City of Coquitlam
Project Name: Spani Pool Concession Tenant Improvement
Project Address: 655 Hillcrest St, Coquitlam, BC V3J 3Z6
Sheet Name: COVER PAGE, DRAWING LIST & SYMBOL LEGEND
Project No.: 0224.0103
Date: 10/04/24
Scale: AS NOTED
Drawn: JK
Checked: AS
Sheet No: E0.0

©Copyright reserved.
These drawings and the design contained therein at all times remain the exclusive property of FaulknerBrowns Architects Inc. Reuse, reproduction or publication by any method in whole or in part is prohibited without their written consent.
Do not scale this drawing.
Do not derive dimensions from digital media

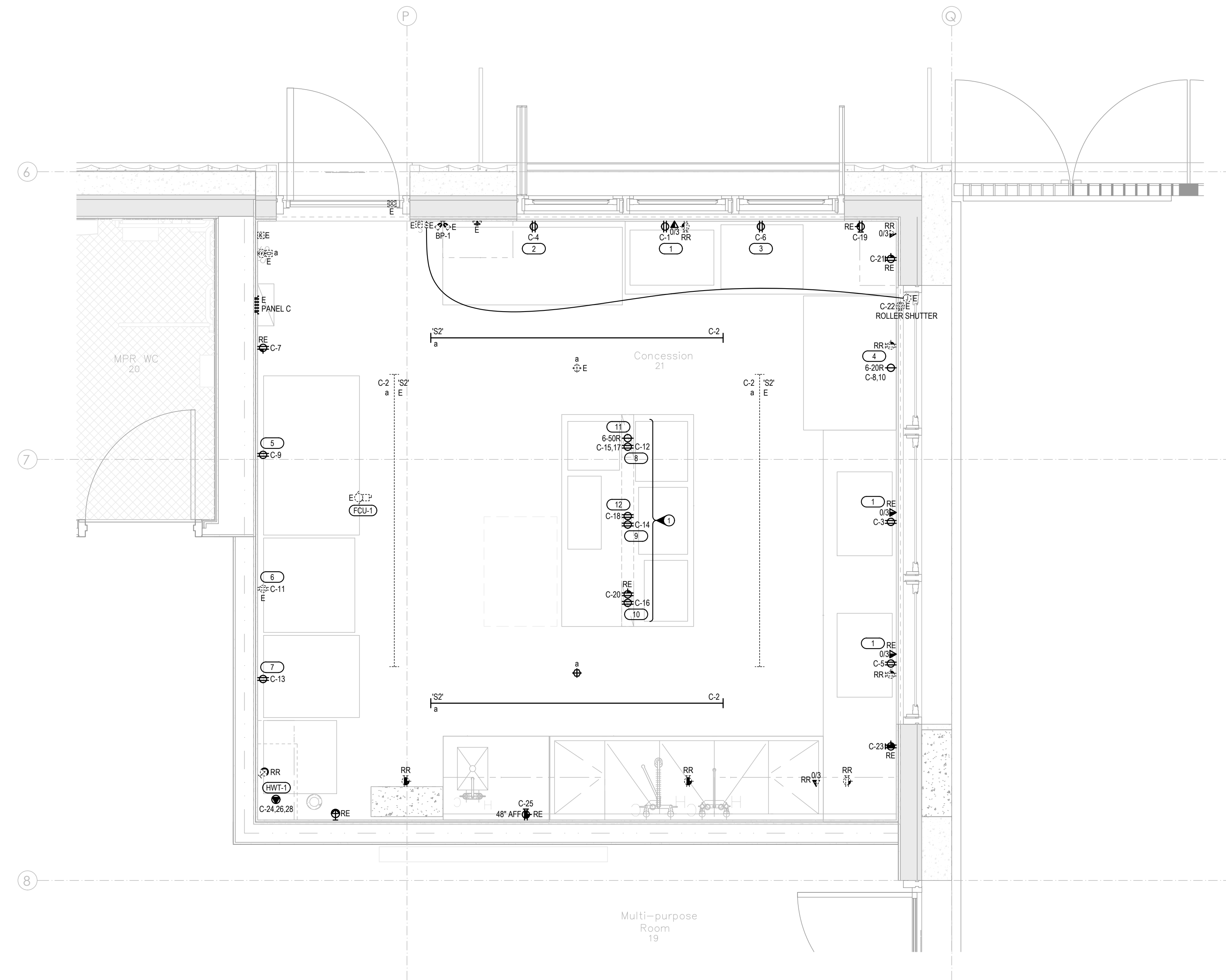


GENERAL NOTES:

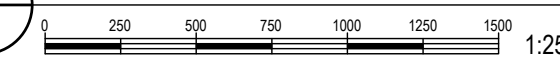
- A. DO NOT ATTACH CONDUITS, BX AND/OR ELECTRICAL BOXES TO UNDERSIDE OF CABLE TRAYS. ELECTRICAL WIRING MUST CROSS PERPENDICULAR TO COMMUNICATION PATHWAYS (CABLE TRAYS).
- B. ALL BOXES FOR POWER, SHALL BE FASTENED TO STEEL STUDS WITHIN WALLS.
- C. ENSURE PULL-IN, JUNCTION AND OUTLET BOXES, CABINETS AND GUTTERS, AND JOINTS IN WIRES AND CABLE AREAS ARE ACCESSIBLE. ALL FURNITURE FEEDS MUST BE ACCESSIBLE.
- D. THE TOTAL NUMBER OF BENDS IN A CONDUIT SYSTEM SHALL NOT EXCEED TWO 90° BENDS. THE INSIDE RADIUS OF A BEND IN CONDUIT SHALL BE AT LEAST 6 TIMES THE INTERNAL DIAMETER OF THE CONDUIT WHEN CONDUIT IS LARGER THAN 53mmC. THE INSIDE RADIUS SHALL BE AT LEAST 10 TIMES THE INTERNAL DIAMETER.
- E. ALL PATHWAYS THROUGH FIRE RATED WALLS OR FLOORS MUST BE FIRE STOPPED.
- F. ALL CORE HOLES MUST BE COORDINATED WITH THE ARCHITECT AND STRUCTURAL ENGINEER TO ENSURE PROPER PLACEMENT.
- G. CONFIRM EXACT MOUNTING LOCATIONS AND HEIGHTS WITH ARCHITECT PRIOR TO ROUGH-IN.
- H. STACK MOUNT AND ALIGN LIGHT SWITCHES, WALL OUTLETS AND FIRE ALARM DEVICES THAT ARE AT THE SAME LOCATION. COORDINATE INSTALLATION AND MOUNTING HEIGHT ON SITE.
- I. NO EXPOSED CONDUIT ALLOWED IN ANY OF THE FLOORS UNLESS APPROVED BY THE ENGINEER IN WRITING.
- J. ACCESS PANEL FOR JUNCTION BOXES OR ACCESS POINTS TO SERVICE THE SPACE AND CONTAINING EMERGENCY ELECTRICAL CONDUCTOR SHOULD BE LISTED TO LIMIT THE TEMPERATURE RISE ON UNEXPECTED SIDE TO LESS THAN 90°C FOR ONE HOUR.
- K. CIRCUITING SHOWN IN DRAWING IS FOR GROUPING PURPOSES ONLY. CONTRACTOR TO USE BEST JUDGEMENT ON SITE TO CONSOLIDATE, RELOCATE, AND PROVIDE NEW CIRCUITS AS NECESSARY.
- L. LOWER CASE LETTERS SHOWN BESIDE LUMINAIRES AND SWITCHES INDICATE CONTROL ZONES.

DRAWING KEY NOTES

- ① ISLAND RECEPTACLES SHALL BE MOUNTED ON THE FLOOR WITHIN THE FOOTPRINT OF THE ELECTRICAL CHASE LOCATED IN THE MIDDLE OF THE ISLAND. EXACT LOCATIONS TO BE DETERMINED ON SITE.



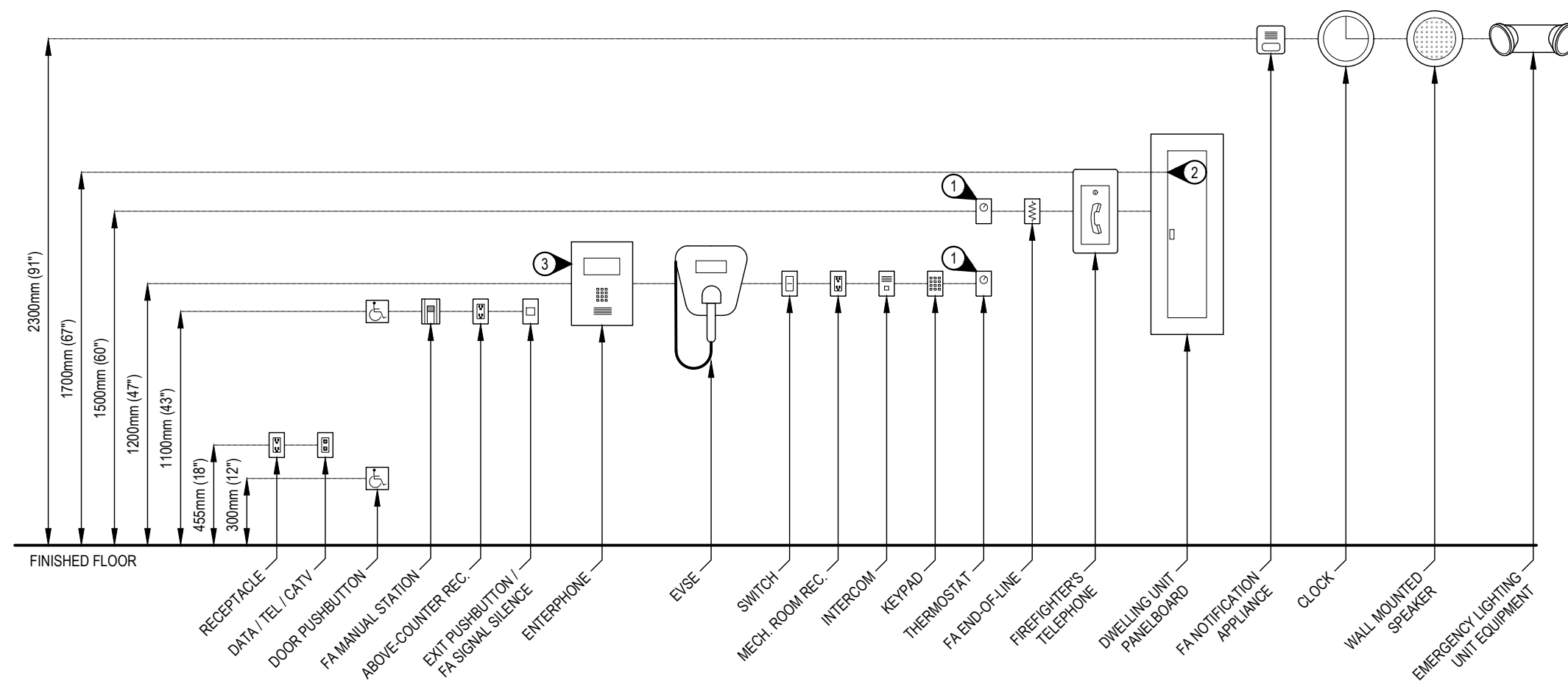
1 ELECTRICAL PLAN
E1.0



#	Submission / Revision Issue	Issue Date
4	ISSUED FOR RFP	2024-10-04
3	ISSUED FOR DRAFT RFP REVIEW	2024-09-09
2	ISSUED FOR BP/HP	2024-08-26
1	ISSUED FOR REVIEW	2024-08-12

Client Name: City of Coquitlam
Project Name: Spani Pool Concession Tenant Improvement
Project Address: 655 Hillcrest St, Coquitlam, BC V3J 3Z6
Sheet Name: ELECTRICAL PLAN
Project No.: 0224.0103 Date: 10/04/24 Scale: AS NOTED Drawn: JK Checked: AS
Sheet No:

FINISHED CEILING - REFER TO ARCHITECTURAL DRAWINGS FOR CEILING HEIGHT



GENERAL NOTES:

- A. ALL MOUNTING HEIGHTS INDICATED ARE TO THE CENTRE OF THE DEVICE UNLESS OTHERWISE INDICATED BY KEYNOTES.
- B. FA NOTIFICATION APPLIANCE MOUNTING HEIGHT IS INDICATIVE OF BOTH AUDIBLE AND VISUAL SIGNAL DEVICES. DEVICES SHALL BE MOUNTED MINIMUM 150mm (6") BELOW THE CEILING, MEASURED TO THE TOP OF THE DEVICE. REFER TO CANULC 554 FOR COMPLETE MOUNTING REQUIREMENTS.
- C. MOUNTING HEIGHTS ARE FOR REFERENCE ONLY. IT IS THE RESPONSIBILITY OF THE CONTRACTOR TO MEET THE INSTALLATION REQUIREMENTS OF ALL APPLICABLE CODES AND STANDARDS.

KEYNOTES:

- 1. THERMOSTATS IN ADAPTIBLE DWELLING UNITS AND IN THE ACCESSIBLE PATH OF TRAVEL SHALL BE LOCATED AT 1200mm (47"). THERMOSTATS OUTSIDE OF THESE AREAS MAY BE MOUNTED AT 1500mm (60").
- 2. PANELEBOARD MOUNTING HEIGHT IS MEASURED TO THE TOP BREAKER HANDLE. THE MOUNTING HEIGHT SHALL BE 1500mm (60") IN ADAPTIBLE ACCESSIBLE DWELLING UNITS AND 1700mm (67") IN ALL OTHER LOCATIONS.
- 3. DEVICE SHALL BE MOUNTED SO THAT ANY CONTROLS, TOUCH PADS, TOUCH SCREENS, OR ANY OTHER USER-OPERABLE DEVICES ARE NOT HIGHER THAN 1200mm (47").

1 TYPICAL MOUNTING HEIGHTS
E2.0

KITCHEN EQUIPMENT SCHEDULE											
EOP #	DESCRIPTION	QTY	ELECTRICAL			BREAKER	WIRE SIZE	CONNECTION		MOUNTING HEIGHT (mm)	REMARKS
			V	PHASE	KW			HP	J/B		
1	POS SYSTEM	3	120	1	0.2	15A-1P	2#12 + GND	5-1SR	600		
2	ICE CREAM FREEZER	1	120	1	0.7	15A-1P	2#12 + GND	5-1SR	455		
3	HOT BEVERAGE MACHINE	1	120	1	0.5	15A-1P	2#12 + GND	5-1SR	600		
4	STEAM TABLE/HOT FOOD TABLE	1	208	1	2.3	20A-2P	2#12 + GND	6-2DR	455		
5	2-DOOR FREEZER	1	120	1	1.0	15A-1P	2#12 + GND	5-1SR	455		
6	1-DOOR BEVERAGE COOLER	1	120	1	0.6	15A-1P	2#12 + GND	5-1SR	455	EXACT LOCATIONS TO BE CONFIRMED WITH ARCHITECTS PRIOR TO INSTALLATION. WHEREVER POSSIBLE, POWER SHALL BE FED VIA IN-FLOOR	
7	1-DOOR COOLER	1	120	1	0.3	15A-1P	2#12 + GND	5-1SR	455	CONDUITS UNDER THE RAISED FLOOR. ISLAND COUNTER EQUIPMENT	
8	COUNTERTOP GLASS DOOR REFRIGERATOR	1	120	1	0.1	15A-1P	2#12 + GND	5-1SR	FLOOR	POWER SHALL BE FED THROUGH THE BUILT-IN ELECTRICAL CHASE.	
9	SLUSH MACHINE	1	120	1	0.9	15A-1P	2#12 + GND	5-1SR	FLOOR		
10	MINI-DONUT OVEN	1	120	1	0.9	15A-1P	2#12 + GND	5-1SR	FLOOR		
11	SEMI-AUTOMATIC RAPID FRYER	1	208	1	7.3	50A-2P	3#8 + GND	6-5DR	FLOOR		
12	HOT DOG MACHINE	1	120	1	0.7	15A-1P	2#12 + GND	5-1SR	FLOOR		

2 KITCHEN EQUIPMENT SCHEDULE
E2.0

DESIGNATION	LOAD		BKR	P	CCT #			P	LOADS			DESIGNATION	
	HP	WATTS			A	B	C		BKR	WATTS	HP		
1- POS TILL 1 RECEPTACLE	150	15	1	1	∅		2	1	20	300		LIGHTING	
1- POS TILL 1 RECEPTACLE	150	15	1	3	∅		4	1	15	720		2 - ICE CREAM FREEZER	
1- POS TILL 1 RECEPTACLE	150	15	1	5	∅		6	1	15	500		3 - HOT BEVERAGE MACHINE	
CONVENIENCE RECEPTACLE	200	20	1	7	∅		8	2	20	2250		4 - STEAM TABLE	
5 - 2-DOOR FREEZER	1000	15	1	9	∅		10						
6 - 1-DOOR BEVERAGE COOLER	600	15	1	11	∅		12	1	15	100		8 - COUNTERTOP GLASS DOOR FRIDGE	
7 - 1-DOOR COOLER	300	15	1	13	∅		14	1	15	900		9 - SLUSH MACHINE	
11 - SEMI-AUTOMATIC RAPID FRYER	7300	50	2	15	∅		16	1	15	900		10 - MINI DONUT OVEN	
							17	∅	18	1	15	700	12 - HOT DOG MACHINE
COUNTER RECEPTACLE	250	20	1	19	∅		20	1	20	250		COUNTER RECEPTACLE	
COUNTER RECEPTACLE	250	20	1	21	∅		22	1	15	200		NORTH ROLLER SHUTTER	
GFCI COUNTER RECEPTACLE	250	20	1	23	∅		24	3	40	10500		HWT-1	
GFCI COUNTER RECEPTACLE	250	20	1	25	∅		26						
							27	∅	28				
							29	∅	30				
							31	∅	32				
							33	∅	34				
							35	∅	36				
							37	∅	38				
							39	∅	40				
							41	∅	42				
							43	∅	44				
							45	∅	46				
							47	∅	48				
							49	∅	50				
							51	∅	52				
							53	∅	54				
							55	∅	56				
							57	∅	58				
							59	∅	60				
							61	∅	62				
							63	∅	64				
							65	∅	66				
							67	∅	68				
							69	∅	70				
							71	∅	72				
							73	∅	74				
							75	∅	76				
SPARE		0	15	1	77		∅	78	1	20	0	SPARE	
SPARE		0	15	1	79		∅	80	1	20	0	SPARE	
SPARE		0	15	1	81		∅	82	1	20	0	SPARE	
SPARE		0	15	1	83		∅	84	1	20	0	SPARE	

3 PANEL SCHEDULE - PANEL C
E2.0

LUMINAIRE SCHEDULE												
TYPE	DESCRIPTION	LOCATION	PRODUCT	MOUNTING	LED PERFORMANCE				CONTROL	VOLTAGE	REMARKS	NOTES
					WATTS (W)	LUMENS	COLOUR (K)	CRI				
S2	LED & LINEAR	CONCESSION	SONIFY FLUXSTREAM FSX-8-80L-840-UNV-01M	SURFACE	64	8000	4000	80	0-10V	120-277V		

- GENERAL NOTES:**
- A. DUE TO CONSTANT CHANGES IN CATALOGUE NUMBERS, ALL NUMBERS INDICATED MUST BE VERIFIED WITH THE MANUFACTURER PRIOR TO ORDERING.
 - B. ALL LUMINAIRE FINISHES TO BE APPROVED BY ARCHITECT PRIOR TO ORDERING.
 - C. TYPE OF CONSTRUCTION FOR ALL CEILING TO BE COORDINATED WITH ARCHITECTURAL DRAWINGS PRIOR TO ORDERING MOUNTING KITS. CONTRACTOR TO OBTAIN A SET OF IFC ARCHITECTURAL DRAWINGS AND COORDINATE MOUNTING WITH CEILING TYPES SHOWN. NO EXTRAS WILL BE ALLOWED FOR RE-ORDERING OF LUMINAIRES OR MOUNTING KITS TO MATCH CEILING TYPES SHOWN ON ARCHITECTURAL PLANS. MOUNTING HEIGHT OF ALL SUSPENDED LUMINAIRES TO BE ADJUSTABLE ON SITE, AND CONTRACTOR TO COORDINATE ON SITE UNDER DIRECTION OF CONSULTANT.
 - D. CONTRACTOR TO ALLOW A MINIMUM 2 WEEKS FOR INITIAL REVIEW OF ENTIRE LIGHTING SHOP DRAWING PACKAGE. NO DELAY CLAIMS WILL BE ALLOWED FOR ANY SUBSEQUENT REVIEW TIME REQUIRED DUE TO INCORRECT SHOP DRAWINGS. IT IS THE CONTRACTOR'S RESPONSIBILITY TO ENSURE LUMINAIRES ARE DELIVERED IN A TIMELY MANNER TO THE SITE. NO EXTRAS WILL BE ALLOWED FOR SUBSTITUTIONS OR RUSH CHARGES REQUIRED TO MEET PROJECT SCHEDULE AND MUST BE ALLOWED FOR IN TENDER PRICE.
 - E. ALL CONTROLS INTEGRATED WITH LUMINAIRES TO BE COMMISSIONED ON SITE AFTER INSTALL CONTRACTOR TO ENSURE THAT ALLOWANCE IS MADE FOR ADJUSTING AND COMMISSIONING OF ALL CONTROLS AS REQUIRED.
 - F. COORDINATE MOUNTING HEIGHT OF ALL WALL MOUNTED LUMINAIRES WITH ARCHITECT PRIOR TO ROUGH-IN. COORDINATE SUSPENSION HEIGHT OF ALL SUSPENDED LUMINAIRES WITH ARCHITECT PRIOR TO INSTALLATION.
 - G. ALL JUNCTION BOXES FOR SURFACE MOUNT LUMINAIRES SHALL NOT BE WIDER THAN THE LUMINAIRE MOUNTING PLATE.
 - H. ALL LED LUMINAIRES ARE TO BE INCLUDED WITH CONSTANT CURRENT DRIVERS UNLESS SPECIFIED.
 - I. DEVIATIONS FROM THE SPECIFIED LUMINAIRE INDICATED IN THE LUMINAIRE SCHEDULE AND CONTROLS PACKAGE WILL REQUIRE ASHRAE 90.1 COMPLIANCE FORMS AND THE LIGHTING DESIGN TO BE REVISED AND RESUBMITTED TO THE AUTHORITY HAVING JURISDICTION BY THE ELECTRICAL ENGINEER OF RECORD. IF A REQUEST TO APPROVE AN ALTERNATE PACKAGE IS MADE AT DURING TENDER/BIDDING, THE COST OF REVISING AND RESUBMITTING THE FORMS AND DRAWINGS WILL BE AT THE EXPENSE OF THE LIGHTING SALES AGENCY. ALLOW FOR THE FOLLOWING TO BE PAID UP-FRONT TO THE ELECTRICAL CONSULTANT, FOR THE RE-DESIGN WORK. SHOULD THIS PROCEDURE NOT BE FOLLOWED, ALTERNATE PRODUCTS WILL BE REJECTED. CONTRACTORS WILL NOT BE ALLOWED ADDITIONAL COMPENSATION FOR REJECTED PRODUCT ALTERNATES. ALL APPROVALS PRODUCTS WILL BE CONFIRMED BY ADDENDUM.
 - J. ELECTRICAL CONTRACTOR IS TO COORDINATE LOCATION OF ALL ELECTRICAL CONNECTIONS AND JUNCTION BOXES BEING PROVIDED WITH MECHANICAL DRAWINGS AND MECHANICAL CONTRACTOR ON SITE.
 - K. LOCATIONS OF MECHANICAL EQUIPMENT HAVE BEEN SHOWN AS REFERENCE ONLY ON ELECTRICAL DRAWINGS. CONTRACTOR IS TO REVIEW MECHANICAL DRAWINGS TO VERIFY QUANTITIES AND LOCATIONS OF ALL EQUIPMENT REQUIRING AN ELECTRICAL CONNECTION. MAKE ALLOWANCES AS NECESSARY.

4 LUMINAIRE SCHEDULE
E2.0

MECHANICAL EQUIPMENT SCHEDULE																EM	EQUIP	STARTER	DISC.	CONTROL	CACF CONTROL	KEY NOTES																
UNIT No.	UNIT DESCRIPTION	UNIT LOCATION	V	∅	LOAD				A	kVA	BREAKER	FEEDER	CONDUIT (OLD)	CONDUIT	PANEL								STANDBY	EMERGENCY SUPPLY	INSTALLED	WIRE	TYPE	SUPPLIED	INSTALLED	WIRE	SUPPLIED	INSTALLED	WIRE	TYPE	SUPPLIED	INSTALLED	WIRE	AUTO ON
					MCA	FLA	KW	HP																														
HWT-1	HOT WATER TANK	CONCESSION	208	3			10.5		29.15	10.5	40	3c/8	21mm	27mm	C	N	N																					

GENERAL NOTES:

- A. CONTRACTOR TO OBTAIN AND REVIEW MECHANICAL DRAWINGS AND SCHEDULES DURING TENDER TO ENSURE ALL SCOPE REQUIRED FOR ELECTRICAL CONNECTION TO MECHANICAL UNITS HAS BEEN ALLOWED FOR. NO EXTRAS WILL BE ALLOWED FOR STARTERS, DISCONNECTS, OR ANY OTHER EQUIPMENT IF IT IS SHOWN ON THE MECHANICAL TENDER DRAWINGS TO BE SUPPLIED BY ELECTRICAL.
- B. CONTRACTOR TO REVIEW MECH SHOP DRAWINGS AND CONFIRM ALL EQUIPMENT LOADS, OVERCURRENT PROTECTION, WIRE AND CONDUIT SIZES AND MOUNTING HEIGHTS PRIOR TO ROUGH-IN.
- C. CONTRACTOR TO INSPECT ALL MECH EQUIPMENT LABELS ON SITE PRIOR TO INSTALLATION AND INFORM THE CONSULTANT OF ANY DISCREPANCIES. FOLLOW THE MECH LABELS FOR FINAL SIZE OF THE BREAKERS AS PER C.E.C.
- D. ALL MOTORS LOCATED OUTSIDE TO BE CW WEATHER PROOF DISCONNECT SWITCHES & RAIN TIGHT CONNECTIONS.
- E. DIV. 26 TO PROVIDE SEPARATE LOCAL DISCONNECT SWITCH FOR MECH EQUIPMENT IF NOT SUPPLIED WITH THE PACKAGED UNIT.
- F. ALL MOTOR RATED RELAYS ARE TO BE WITH A HOA POSITION SWITCH, MOTOR PROTECTION SWITCH AND 24 VAC CONTROL CIRCUIT.
- G. ELECTRICAL CONTRACTOR IS TO COORDINATE LOCATION OF ALL ELECTRICAL CONNECTIONS AND JUNCTION BOXES BEING PROVIDED WITH MECHANICAL DRAWINGS AND MECHANICAL CONTRACTOR ON SITE.
- H. LOCATIONS OF MECHANICAL EQUIPMENT HAVE BEEN SHOWN AS REFERENCE ONLY ON ELECTRICAL DRAWINGS. CONTRACTOR IS TO REVIEW MECHANICAL DRAWINGS TO VERIFY QUANTITIES AND LOCATIONS OF ALL EQUIPMENT REQUIRING AN ELECTRICAL CONNECTION. MAKE ALLOWANCES AS NECESSARY.

KEY NOTES:

MECH MOTOR SCHEDULE ABBREVIATIONS:
(A) SUPPLIED BY:
 E = ELECTRICAL
 M = MECHANICAL

(B) STARTER TYPE:
 MAN = MANUAL STARTER
 MAG = MAGNETIC STARTER W/ HOA SWITCH W/ AUX. CONTACTS
 MR = MOTOR RATED RELAY C/W 24VAC COIL, HOA SWITCH AND MOTOR PROTECTION SWITCH
 INT = INTEGRAL TO UNIT
 VFD = VARIABLE FREQUENCY DRIVE COMPLETE WITH BYPASS AND HOA
 MAGNETIC STARTER (ALSO NOTED AS VSD)
 HOA = MAGNETIC STARTER COMPLETE WITH HAND/ON-OFF/AUTO SWITCH
 PCS = PACKAGED CONTROL SYSTEM
 SW OR WS = WALL SWITCH
 CP = CONTROL PANEL

(C) CONTROL TYPE:
 BMS = BUILDING MANAGEMENT SYSTEM
 D = DDC SYSTEM
 ES = END SWITCH
 ET = LINE VOLTAGE THERMOSTAT
 TSTAT = THERMOSTAT
 FA = FIRE ALARM
 FS = FLOW SWITCH
 GS = GAS SENSOR
 H = HUMIDITY SENSOR
 I = INTERLOCK
 LS = LEVEL SWITCH

T = LOW VOLTAGE T/STAT OR SENSOR
 TS = TAMPER SWITCH
 FAP = FIRE ALARM PANEL
 CC = CHEMICAL CONTROLLER
 LGP = LIFE GUARD PANEL
 C = CONTINUOUS OPERATION
 SW OR WS = WALL SWITCH
 RSTAT = REVERSE ACTING THERMOSTAT
 VS = VARIABLE SPEED CONTROL SWITCH
 PS = PRESSURE SWITCH
 TC = TIME CLOCK

5 MECHANICAL SCHEDULE
E2.0



FaulknerBrowns Architecture Inc
 204-1551 Johnston St
 Vancouver BC Canada V6H 3R9

+1 (604) 282-4383
 info@faulknerbrowns.com
 faulknerbrowns.com

© Copyright reserved.
 These drawings and the design contained therein at all times remain the exclusive property of FaulknerBrowns Architects Inc. Reproduction or publication by any method in whole or in part is prohibited without their written consent.
 Do not scale this drawing
 Do not derive dimensions from digital media



#	Submission / Revision Issue	Issue Date
4	ISSUED FOR RFP	2024-10-04
3	ISSUED FOR DRAFT RFP REVIEW	2024-09-09
2	ISSUED FOR BP/HP	2024-08-26
1	ISSUED FOR REVIEW	2024-08-12

Client Name: City of Coquitlam
 Project Name: Spani Pool Concession Tenant Improvement
 Project Address: 655 Hillcrest St, Coquitlam, BC V3J 3Z6
 Sheet Name: SCHEDULES & DETAILS
 Project No.: 0224.0103 10/04/24 Date: AS NOTED Scale: JK AS Drawn: Checked: Sheet No.: AS

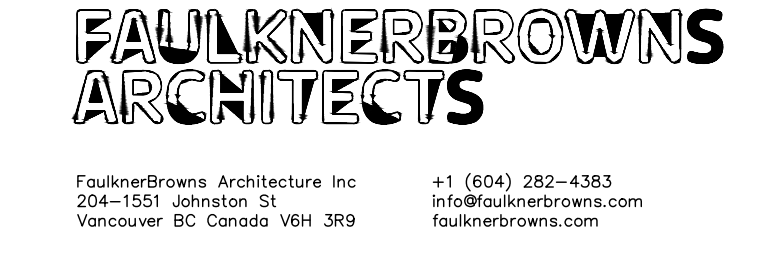
ELECTRICAL SPECIFICATION

1. GENERAL
1. GENERAL REQUIREMENTS, INSTRUCTIONS TO BIDDERS, THIS SPECIFICATION AND ANY ADDENDA HERETO FORM PART OF THE CONTRACT DOCUMENTS AND SHALL BE READ IN CONJUNCTION WITH THEM. WORK TO INCLUDE THE FURNISHING OF ALL LABOR AND MATERIALS, UNLESS SPECIFIED OTHERWISE, TO COMPLETE AND PUT INTO OPERATING CONDITION ALL ELECTRICAL SYSTEMS AS INDICATED ON THE DRAWINGS AND SPECIFIED HEREIN.

2. UPON COMPLETION OF WORK, THE ELECTRICAL INSTALLATION SHALL BE LEFT IN A CLEAN AND FINISHED CONDITION TO THE SATISFACTION OF THE ENGINEER.
ACCESS DOORS
1. THE ELECTRICAL TRADE IS TO SUPPLY AND INSTALL ACCESS DOORS AS REQUIRED FOR PROPER SERVICING OF ALL ELECTRICAL WORK. ACCESS DOORS SHALL BE COMPLETE WITH NECESSARY FRAMES AND HINGED DOORS HELD CLOSED WITH CAPTIVE STUDS. ACCESS PANEL TO BE OF NOT LESS THAN 1/4 GAUGE STEEL, PRIME COAT FINISHED AND PAINTED ON THE JOB TO MATCH THE WALL OR CEILING FINISH.

1. UPDATED TYPED/WITTEN PANEL DIRECTORIES SHALL BE PROVIDED FOR ALL PANELS.
2. UTILIZE EXISTING PANELBOARDS AS INDICATED ON THE DRAWING. REUSE EXISTING BREAKERS WHERE POSSIBLE. PROVIDE NEW BREAKERS AS REQUIRED.
3. BALANCE PANEL LOAD FOR EACH PHASE A, B, & C. ALLOW FOR RELOCATING CIRCUITS WITHIN PANEL BOARD TO BALANCE THE LOAD.

2. PROVIDE HEAD END UNIT CAPABLE OF SUPPORTING A MINIMUM OF FOUR SEPARATE PA ZONES. MUST INCLUDE ALL MODULES/EQUIPMENT NECESSARY FOR TALKBACK OPERATION. MUST BE C/W MODULES/EQUIPMENT NECESSARY TO SUPPORT CLOCK SYSTEM.
3. PROVIDE WALL MOUNTED SPEAKERS AS INDICATED ON DRAWING. SPEAKERS TO HAVE BUILT-IN MICROPHONE, BUILT-IN PUSHBUTTON, AND TALKBACK.
4. EQUIPMENT BY BOGAN OR APPROVED EQUAL.



Faulkner Browns Architecture Inc
204-1551 Johnston St
Vancouver BC Canada V6H 3R9
+1 (604) 282-4383
info@faulknerbrowns.com
faulknerbrowns.com

©Copyright reserved.
These drawings and the design contained therein at all times remain the exclusive property of Faulkner Browns Architects Inc.
Re-use, reproduction or publication by any method in whole or in part is prohibited without their written consent.
Do not scale this drawing
Do not derive dimensions from digital media



505 Burrard Street, Suite 950, Vancouver, BC V7X 1A4
604.569.6500 | www.aesengr.com
CALGARY | KELOWNA | VANCOUVER | VICTORIA

Table with 4 columns: #, Submission / Revision Issue, Issue Date. Includes rows for RFP, Draft RFP Review, and Review dates.

Client Name: City of Coquitlam
Project Name: Spani Pool Concession Tenant Improvement
Project Address: 655 Hillcrest St, Coquitlam, BC V3J 3Z6

ELECTRICAL SPECIFICATIONS
Project No: 0224.0103 Date: 10/04/24 Scale: AS NOTED Drawn: JK Checked: AS