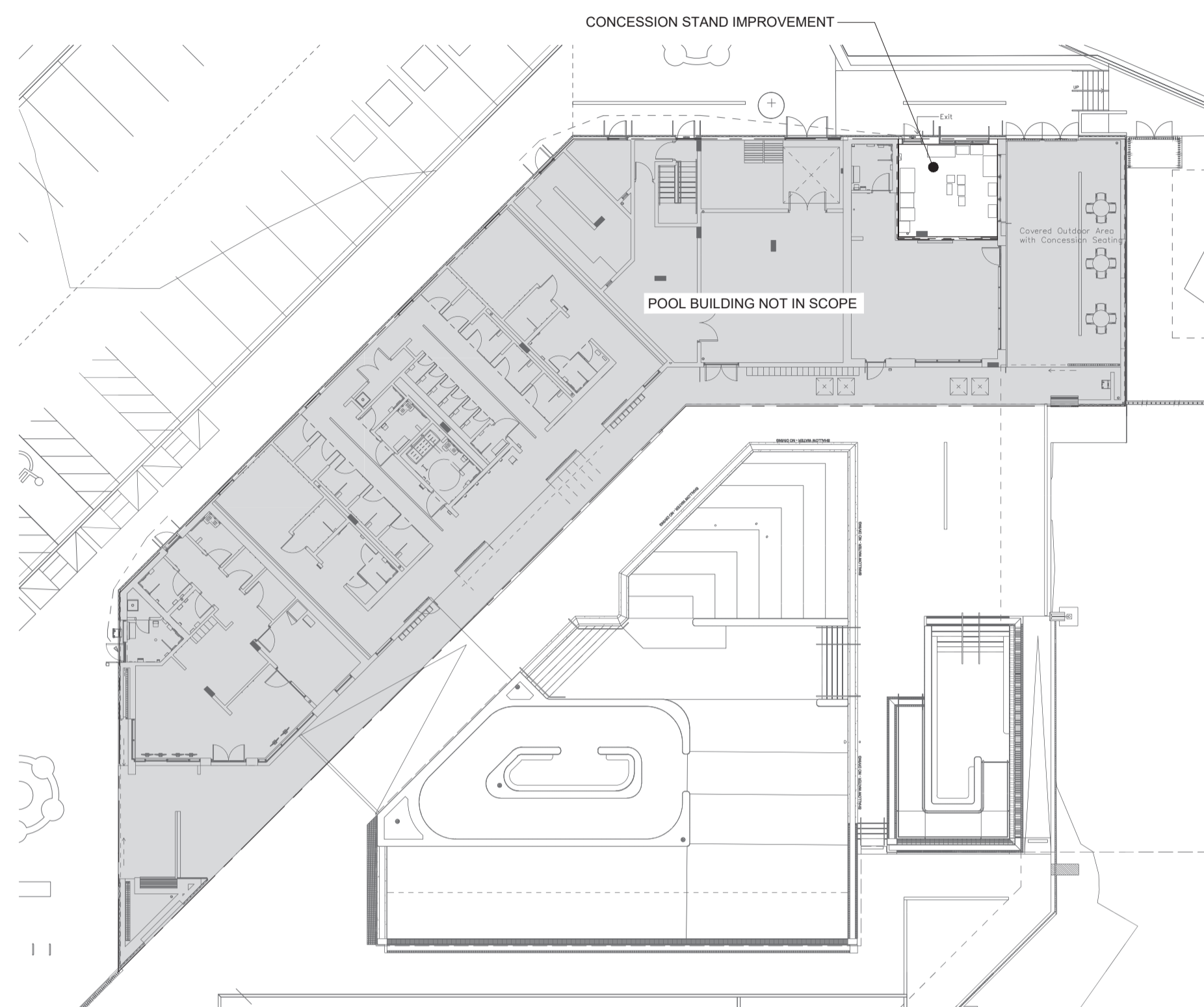


SPANI POOL CONCESSION TENANT IMPROVEMENT

655 HILLCREST ST, COQUITLAM, BC V3J 3Z6

AME Group
200 - 638 Smithe St
Vancouver, BC V6B 1E3
T.604-684-5995 amegroup.ca



PROJECT INFORMATION	
PROJECT ADDRESS: 655 HILLCREST ST, COQUITLAM, BC	

BUILDING LOADS			
DESCRIPTION	LOAD	UNITS	PIPE SIZE (MM)
DOMESTIC WATER	13	FU	25MM
SANITARY GREASE	4.06	LPS	100MM TO EXISTING GREASE INTERCEPTOR
SANITARY GREASE (NON CONTINUOUS FLOW)	4.73	LPS	100MM TO EXISTING GREASE INTERCEPTOR

MECHANICAL ABBREVIATIONS

AD AREA DRAIN	FE FIRE EXTINGUISHER	NO NORMALLY OPEN
AHF ABOVE FINISHED FLOOR	FFH FORCE FLOW HEATER	NTS NOT TO SCALE
AHU AIR HANDLING UNIT	FLA FULL LOAD AMPS	O/A OUTDOOR AIR
ARCH ARCHITECTURAL	FLR FLOOR	OBD OPPOSED BLADE DAMPER
BB BASEBOARD HEATER	FLM FEET PER MINUTE	OED OPEN ENDED DUCT
BDD BACKDRAFT DAMPER	FSD FIRE-SMOKE DAMPER	OD OUTSIDE DIAMETER
BF BOTTLE FILLER	FT FEET/FOOT	POI PLUMBING AND DRAINAGE INSTITUTE
BFP BACKFLOW PREVENTER	GAL GALLONS	POC POINT OF CONNECTION
BHP BREAK HORSEPOWER	GPM GALLONS PER MINUTE	PRV PRESSURE REDUCING VALVE
BTUH BRITISH THERMAL UNIT / HOUR	GWB GYPSUM WALL BOARD	PSI POUNDS PER SQUARE INCH
CD CONTROL DAMPER	HD HUB DRAIN	R/A RETURN AIR
CB CATCH BASIN	HB HOSE BIBB	RF RETURN FAN
CFM CUBIC FEET PER MINUTE	HP HORSEPOWER	RM ROOM
CLG CEILING	HCR HEATING COIL RETURN	RPM REVOLUTIONS PER MINUTE
CO CLEANOUT	HCS HEATING COIL SUPPLY	RWL RAIN WATER LEADER
CONN CONNECTION	HRR HEAT RECOVERY RETURN	S/A SUPPLY AIR
CW COMPLETE WITH	HRS HEAT RECOVERY SUPPLY	SF SUPPLY FAN
CONT CONTINUATION	HWR HEATING WATER RETURN	SH SHOWER
DB DRY BULB	HWS HEATING WATER SUPPLY	SK SINK DRAIN ABOVE
CTE CONNECT TO EXISTING	ID INSIDE DIAMETER	SS STAINLESS STEEL
DCW DOMESTIC COLD WATER	IE INVERT ELEVATION	SP STATIC PRESSURE
DDC DIRECT DIGITAL CONTROL	IN INCH	SPEC SPECIFICATION
DEG DEGREE	INV INVERT	SR SANITARY RISER
DF DRINKING FOUNTAIN	JS JANITOR SINK	ST STORM MAIN
DHW DOMESTIC HOT WATER	KW KILOWATT	T/A TRANSFER AIR
DIA DIAMETER	KS KITCHEN SINK	TAD TRANSFER AIR DUCT
DN DOWN	LV LAVATORY	TBC TO BE CONFIRMED
DW DISH WASHER	LAT LEAVING AIR TEMPERATURE	TBD TO BE DETERMINED
DWG DRAWING	LBS POUNDS	TD TRENCH DRAIN
DWHR DOMESTIC HOT WATER RECIRCULATION	LWT LEAVING WATER TEMPERATURE	THR THROUGH
E/A EXHAUST AIR	MAU MAKE-UP AIR UNIT	TS TAMPER SWITCH
EAT ENTERING AIR TEMPERATURE	MAX MAXIMUM	TSP TOTAL STATIC PRESSURE
EF EXHAUST FAN	MH MANHOLE	TYP TYPICAL
EFF EFFICIENCY	MBH 1000 BRITISH THERMAL UNITS/HOUR	UR URINAL
ELEC ELECTRICAL	MD MOTORIZED DAMPER	V VENT
ENT ENTERING	MECH MECHANICAL	VFD VARIABLE FREQUENCY DRIVE
ESP EXTERNAL STATIC PRESSURE	MIN MINIMUM	VTR VENT THROUGH ROOF
EWV ENTERING WATER TEMPERATURE	MU MAKE-UP MECHANICAL WATER	W WATER MAIN
EXH EXHAUST	NFHB NON FREEZE WALL HYDRANT	WB WET BULB
F FIRE MAIN	NIC NOT IN CONTRACT	WC WATER CLOSET
FD FLOOR DRAIN/FIRE DAMPER	NC NOISE CRITERIA/NORMALLY CLOSED	WCO WALL CLEANOUT
		WG WATER GAUGE

MECHANICAL DRAWING LIST			
DRAWINGS NO.	DESCRIPTION	SCALE	
M000	COVER SHEET	NTS	
M001	MECHANICAL EQUIPMENT SCHEDULES	NTS	
M100	PLUMBING PLAN - LEVEL 0	1:25	
M101	PLUMBING PLAN - LEVEL 1	1:25	
M200	HVAC PLAN - LEVEL 1	1:25	
M300	MECHANICAL DETAILS	NTS	
M400	SPECIFICATIONS I	NTS	
M401	SPECIFICATIONS II	NTS	

MECHANICAL GENERAL NOTES:

- CONTRACTOR IS RESPONSIBLE FOR REVIEWING AND VERIFYING ACTUAL ONSITE CONDITIONS AND EQUIPMENT LOCATIONS PRIOR TO ANY AND ALL DEMOLITION WORK AND/OR EQUIPMENT REMOVAL.
- CONTRACTOR TO INCLUDE AS A PART OF THE BID ALL COSTS ASSOCIATED WITH CUTTING AND PATCHING THAT IS REQUIRED TO INSTALL ALL NEW MECHANICAL SYSTEMS AS REQUIRED TO MEET THE SITE CONDITIONS AS SHOWN ON THE DRAWINGS. PATCHING SHALL MEET THE AESTHETIC CONDITIONS WHICH WAS THE CONDITION PRIOR TO ANY CUTTING BEING PERFORMED.
- CONTRACTOR TO PROPERLY SEAL AND REPAIR ANY AND ALL DAMAGE THAT IS A RESULT OF REMOVAL OR DEMOLITION OF MECHANICAL EQUIPMENT. THIS INCLUDES BUT IS NOT LIMITED TO WALL, DOOR, CEILINGS, ETC.
- THE EXISTING FACILITIES MECHANICAL SYSTEMS SHALL REMAIN OPERATIONAL DURING THE CONSTRUCTION AND RENOVATION PERIOD. CONTRACTOR TO COORDINATE CONSTRUCTION ACTIVITIES AND PHASING WITH OWNER TO MINIMIZE DISRUPTIONS TO OWNERS OPERATIONS AND ACCESS, AND TO ENSURE SAFETY OF THE USERS. PROVIDE ALL MEASURES REQUIRED TO PREVENT HAZARDS TO PEOPLE AND DAMAGE TO ITEMS REMAINING INCLUDING BUT NOT LIMITED TO DAMAGE FROM DUST AND HEAT. BUILDING WILL NOT BE IN OPERATION.
- THE MECHANICAL SYSTEM SHALL CONSIST OF ALL WORK SHOWN ON THE DRAWINGS, DIAGRAMS, SCHEMATICS AND AS DESCRIBED IN THE SPECIFICATIONS.
- THE MECHANICAL PLANS ARE DIAGRAMMATIC IN NATURE AND DO NOT ATTEMPT TO SHOW ALL REQUIRED OFFSETS. REFER TO ARCHITECTURAL AND STRUCTURAL DRAWINGS FOR ADDITIONAL CONSTRUCTION DETAILS.
- COORDINATE THE DRAWINGS WITH THE SPECIFICATIONS AND IN CASES WHERE CONFLICTS OCCUR THE MOST STRINGENT REQUIREMENT SHALL APPLY.
- CONTRACTOR TO COORDINATE ALL MECHANICAL WORK WITH THAT OF OTHER TRADES TO ENSURE PROPER AND ADEQUATE INTERFACE WITH THE WORK OUTLINED FOR THIS PROJECT.
- CONTRACTOR TO PROVIDE NEC (NATIONAL ELECTRICAL CODE) CLEARANCE HORIZONTAL AND VERTICAL REQUIREMENTS FOR ALL INSTALLED EQUIPMENT. OFFSET MECHANICAL WORK AS REQUIRED TO MEET THIS REQUIREMENT.
- PROVIDE CONCEALED DAMPER REGULATORS FOR ALL VOLUME DAMPERS OVER INACCESSIBLE CEILINGS AND SOFFITS. REFER TO ARCHITECTURAL DRAWINGS FOR CEILING TYPES.
- CONTRACTOR TO ALLOW AND PROVIDE FOR METAL DUCTWORK TRANSITIONS BETWEEN ALL EQUIPMENT AND DUCT CONNECTIONS.
- COORDINATE EXACT LOCATIONS OF ALL ROOM THERMOSTATS AND/OR ROOM TEMPERATURE SENSORS WITH THE DESIGN ARCHITECT BEFORE FINAL INSTALLATION.
- CONTRACTOR TO PROVIDE FIRESTOPPING THROUGH ALL FIRE SEPARATIONS

SYMBOL SCHEDULE

PIPING			DUCTWORK		
DEMOLITION	EXISTING	NEW	DEMOLITION	EXISTING	NEW
FITTINGS AND VALVES			FIRE PROTECTION		
OUTLETS AND DRAINS			EQUIPMENT TAGS		
SYSTEM MONITORING					

Permit to Practice No.: 1000236



#	Submission / Revision Issue	Issue Date
4	ISSUED FOR RFP	10/07/24
3	ISSUED FOR BR/PRP REVIEW	09/13/24
2	ISSUED FOR BR & HP	08/23/24
1	ISSUED FOR 50% DD	08/12/24

Client Name:
CITY OF COQUITLAM
Project Name:
SPANI POOL CONCESSION TENANT IMPROVEMENT
Project Address:
655 HILLCREST ST, COQUITLAM, BC V3J 3Z6
Street Name:
COVER SHEET
Project No.: 3418-005-21 Date: 09/18/24 Scale: NTS Drawn: PDM Checked: EN
Sheet No. **M000**

©Copyright reserved.
These drawings and the design contained therein at all times remain the exclusive property of FaulknerBrowns Architects Inc. Reuse, reproduction or publication by any method in whole or in part is prohibited without their written consent.
Do not scale this drawing.
Do not derive dimensions from digital media.

PIPE MATERIAL	NOM PIPE SIZE INCHES	COLD WATER				HOT WATER (< 140°F)			
		FU	L/S	GPM	VELOCITY (FT/S)	FU	L/S	GPM	VELOCITY (FT/S)
COPPER - TYPE K	0.5	1.0	0.07	1.2	1.7	1.0	0.07	1.1	1.7
COPPER - TYPE K	0.75	3.0	0.18	2.9	2.2	3.0	0.18	2.9	2.1
COPPER - TYPE K	1	8.0	0.41	6.4	2.7	8.0	0.39	6.2	2.6
COPPER - TYPE K	1.25	16.0	0.74	11.8	3.1	15.5	0.72	11.4	3.0
COPPER - TYPE K	1.5	28.0	1.19	18.8	3.5	26.5	1.13	18.0	3.4
COPPER - TYPE K	2	86.5	2.52	39.9	4.2	78.5	2.37	37.6	4.0
COPPER - TYPE K	2.5	230.5	4.49	71.1	4.9	165.5	3.66	58.1	4.0

NOTES:
1 THIS PIPE SIZING TABLE USES THE DETAILED ENGINEERING METHOD.
2 DOMESTIC COLD WATER SIZED FOR MAXIMUM PRESSURE LOSS OF 5 PSI/100' OR MAXIMUM ALLOWABLE PIPE VELOCITY
3 DOMESTIC HOT WATER SIZED FOR MAXIMUM PRESSURE LOSS OF 4 PSI/100' OR MAXIMUM ALLOWABLE PIPE VELOCITY
4 DOMESTIC HOT WATER REIRC SIZED FOR MAXIMUM PRESSURE LOSS OF 3 PSI/100' OR MAXIMUM ALLOWABLE PIPE VELOCITY

FANS (EXISTING)												
EQUIPMENT TAG	QTY	LOCATION	SERVICE	TYPE	MANUFACTURER	MODEL	AIR FLOW (LPS)	E. S. P. (PA)	FAN (RPM)	SOUND LEVEL (SONES)	WEIGHT (KG)	NOTES
EF-5	1	ROOF	CONCESSION	CENTRIFUGAL	GREENHECK	G-070-VG	47	25	1725	0.4	9	ALL

NOTES:
1 BACKDRAFT DAMPER

DIFFUSERS AND GRILLES					
EQUIPMENT TAG	DESCRIPTION/TYPE	MANUFACTURER	SERVICE	MODEL NUMBER	NOTES
E-1	EGG CRATE	PRICE INDUSTRIES	EXHAUST	80	ALL
R-1	EGG CRATE	PRICE INDUSTRIES	RETURN	80-VCS3	ALL
S-1	600X600 SQUARE PLAQUE DIFFUSER	PRICE INDUSTRIES	SUPPLY	SPD	ALL

NOTES:
1 PROVIDE WITH BORDER STYLES THAT ARE COMPATIBLE WITH ADJACENT WALLS AND CEILING SYSTEMS.
2 NC LEVELS BASED ON OCTAVE BANDS 2-7 SOUND POWER LEVELS MINUS A ROOM ABSORPTION OF 10 DB, MEASURED PER ASHRAE 70-91.
3 CUSTOM COLOUR OF PRODUCT TO BE SELECTED BY THE ARCHITECT DURING THE SHOP DRAWINGS SUBMITTAL PROCESS.
4 CONTRACTOR TO REFER TO MECHANICAL AND ARCHITECTURAL DETAILS FOR SUPPLY AND INSTALLATION OF LINEAR GRILLE

DOMESTIC WATER HEATER (ELECTRIC)									
EQUIPMENT TAG	LOCATION	MANUFACTURER	MODEL	INPUT (KW)	TANK CAPACITY (L)	AMPS	POWER (V/PH/Hz)	SHIPPING WEIGHT (KG)	NOTES
HWT-1	CONCESSION STAND	HUBBEL	V610R	10.5	23	29	208/3/60	43	

NOTES:

4 PIPE FAN COIL UNIT (EXISTING)														
EQUIPMENT TAG	LOCATION	MANUFACTURER	MODEL SIZE	WEIGHT (KG)	AIR FLOW (LPS)	ESP (PA)	HGT CAP (KW)	TOTAL CLG CAP (KW)	SEER	EER	ELECTRICAL		NOTES	
FC-1	CONCESSION	SAMSUNG	AC009BNHDCHAA	34	122	150	4.40	2.64	20.6	13.1	MCA	V	PH	Hz

BACKFLOW PREVENTER											
EQUIPMENT TAG	QTY	LOCATION	SERVICE	BACKFLOW PREVENTOR TYPE	MANUFACTURER	MODEL NO.	SIZE (MM)	MAX WORKING PRESS. (KPA)	NOTES		
BFP-1	1	CONCESSION STAND	FILTER FOR HOT BEVERAGE MACHINE DCW	DCVA	WATTS	LF007M3QT	20	1207	ALL		
BFP-2	1	CONCESSION STAND	JANITOR SINK DCW	RPBP	WATTS	LF009M3-QT-FS	20	1207	ALL		
BFP-3	1	CONCESSION STAND	JANITOR SINK DHW	RPBP	WATTS	LF009M3-QT-FS	20	1207	ALL		
BFP-4	1	CONCESSION STAND	3-COMPARTMENT SINK/ CHEMICAL DISPENSER	RPBP	WATTS	LF009M3-QT-FS	20	1207	ALL		
BFP-5	1	CONCESSION STAND	3-COMPARTMENT SINK	RPBP	WATTS	LF009M3-QT-FS	20	1207	ALL		

NOTES:
1 LEAD FREE (NO EXCEPTIONS)

EXPANSION TANK												
EQUIPMENT TAG	LOCATION	TANK DESCRIPTION	TYPE	MANUFACTURER	MODEL	VOLUME (L)	ACCEPTANCE VOLUME (LITRES)	TANK DIAMETER (MM)	TANK LENGTH (MM)	PRE CHARGE PRESS. (KPA)	MAX WORKING PRESS. (KPA)	NOTES
ET-1	CONCESSION STAND	DOMESTIC HOT WATER	DIAPHRAGM	AMTROL	ST-SC-DD	8	3.4	203	356	380	1034	ALL

NOTES:
1 FIXED BLADDER (FDA APPROVED BUTYL) TANK SUITABLE FOR DOMESTIC USE.
2 DIELECTRIC CONNECTION.
3 TANK TO BE ASME RATED.
4 ASHRAE 90.1 INSULATION COMPLIANCE

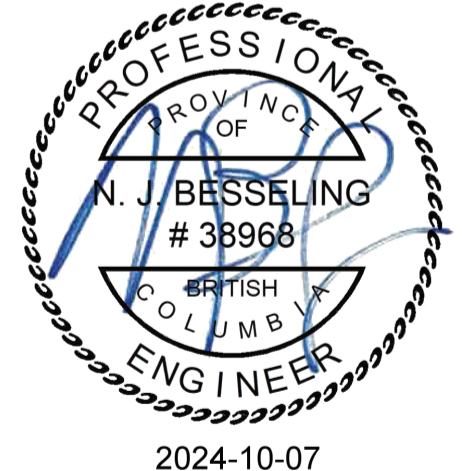
GREASE INTERCEPTOR (EXISTING)										
UNIT TAG	DESCRIPTION	LOCATION	MANUFACTURER	MODEL	SIZE (WxDxH MM)	INLET SIZE (MM)	WATER CAPACITY (L)	GREASE CAPACITY (KG)	FLOW RATE (LPS)	NOTES
GI-1	GREASE INTERCEPTOR	BELOW GRADE	GREEN TURTLE TECHNOLOGIES	GMC100	1575x815x815	1000	378.5	90.7	6.3	ALL

NOTES:
1 FILL WITH CLEAN WATER PRIOR TO START-UP OF SYSTEM.

PLUMBING FIXTURE SCHEDULE		
EQUIPMENT TAG	MANUFACTURER / MODEL	DESCRIPTION/TYPE
HAND SINK FAUCET (FT-1)	FAUCET: MOEN MODEL MALI 87651	SINGLE-HANDLE HIGH ARC PULLDOWN KITCHEN FAUCET, LEVER STYLE HANDLE, FLOW RATE 5.7 L/MIN, ASME RATED, PULLDOWN SPRAY, 360 ROTATING SPOUT
3 COMP SINK FAUCET (FT-2)	PRE-RINSE FAUCET: T&S BRASS MODEL MPY-8WLN-12-4C	PRE-RINSE UNIT, EASY INSTALL 8" WALL MOUNT MIXING FAUCET, QUARTER TURN ETERNA CARTRIDGES W/ SPRING CHECKS, LEVER HANDLES, ADD-ON FAUCET W/12" SWING NOZZLE, COMPACT SPRING, 24" FLEXIBLE STAINLESS STEEL HOSE, 0.65 GPM LOW FLOW SPRAY NOZZLE, 6" WALL BRACKET & 1/2" NPT FEMALE INLETS
3 COMP SINK FAUCET (FT-3)	FAUCET: T&S BRASS MODEL B-0331	8" WALL MOUNTED MIXING FAUCET, QUARTER-TURN ETERNA CARTRIDGES W/ SPRING CHECKS, LEVER HANDLES, 6" SWIVELRIGID GOOSENECK & 1/2" NPT FEMALE INLETS
JS-1	BASIN: STERN-WILLIAMS MODEL SB-900	MOP SERVICE BASIN 24"x24"x12", T-35 3/8" HOSE AND WALL HOOK, T-40 MOP HANGER, 20 GA. 304 STAINLESS BP BACK SPLASH PANEL
	TRIM: CHICAGO FAUCETS MODEL 897-XK-CP	WALL MOUNTED HOT AND COLD SINK FAUCET, VANDAL PROOF LEVER HANDLES, ATMOSPHERIC VACUUM BREAKER, THREADED FOR HOSE CONNECTION
	MIXING VALVE: LAWLER TMM1070	BELOW DECK MECHANICAL MIXING VALVE, BRONZE BODY, TEMPERATURE ADJUSTING DIAL, 10MM (3/8") INLET AND OUTLET COMPRESSION FITTINGS, HIGH TEMPERATURE THERMOSTATIC LIMIT STOP, SHUT-OFF WITH AUTOMATIC RESET WHEN TEMPERATURE EXCEEDS 48.8C (120F), INTEGRAL CHECKS, OFFER TEMPERATURE RANGE FROM FULL COLD THROUGH 48C (114.8F)
FD-1 (EXISTING)	WATTS DRAINAGE MODEL FD-100-C-A	PROVIDE P-TRAP, SAME MATERIAL AS THE CONNECTING PIPE DRAIN
		FLOOR DRAIN WITH ROUND STRAINER, EPOXY COATED CAST IRON FLOOR DRAIN WITH ANCHOR FLANGE 6" DIAMETER STRAINER, DRAIN TO BE EXTENDED TO FINISHED FLOOR THROUGH SUB FLOOR

NOTES:
1 PROVIDE TEE, ADAPTORS AND FLEX FOR FITTINGS
2 PROVIDE FLOOR FLANGES FOR CONNECTING PIPE DRAINS OFF FIXTURES

Permit to Practice No.: 1000236

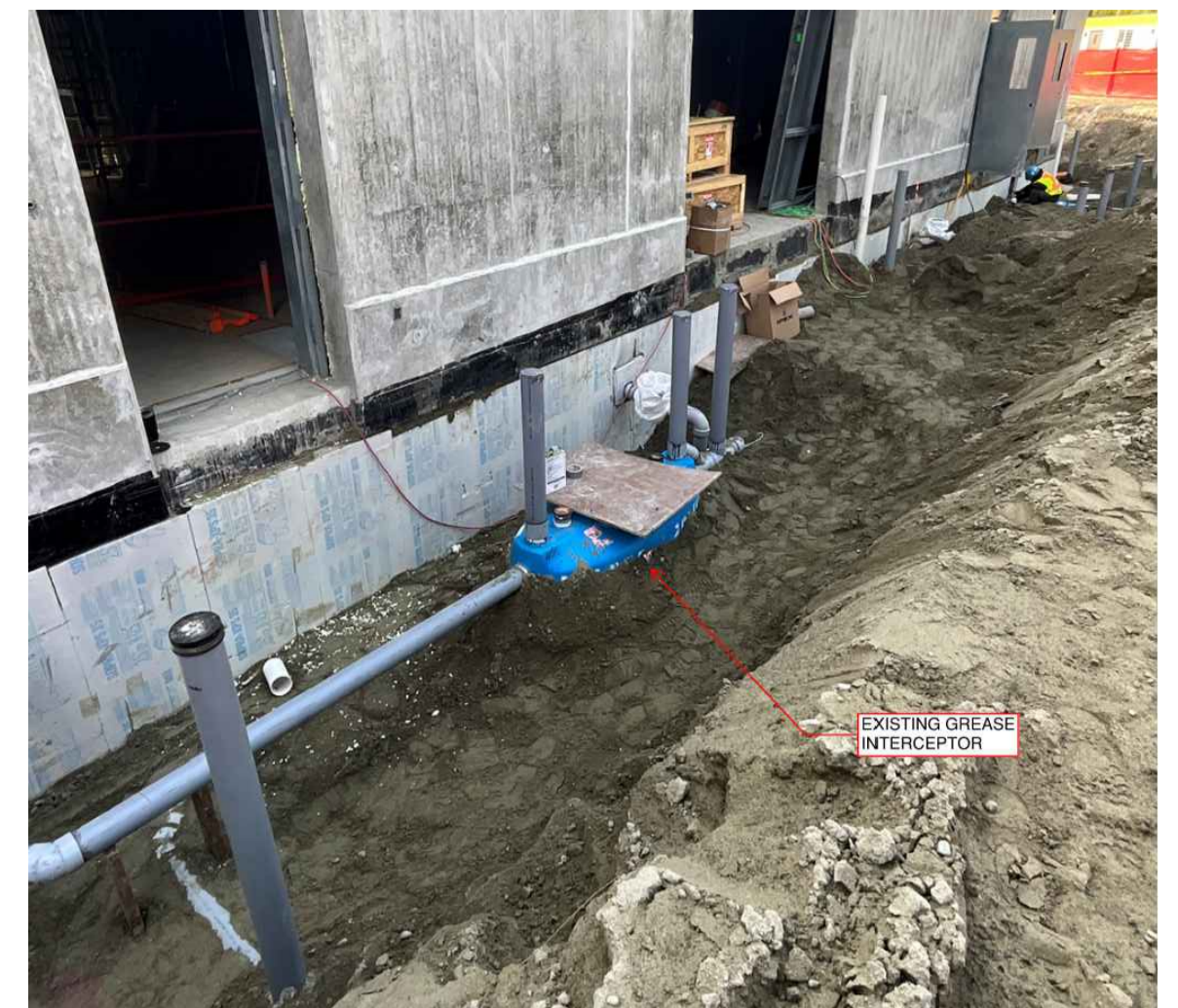


#	Submission / Revision Issue	Issue Date
4	ISSUED FOR RFP	10/07/24
3	ISSUED FOR BPR/RFP REVIEW	09/13/24
2	ISSUED FOR BP & HP	08/23/24
1	ISSUED FOR 50% DD	08/12/24

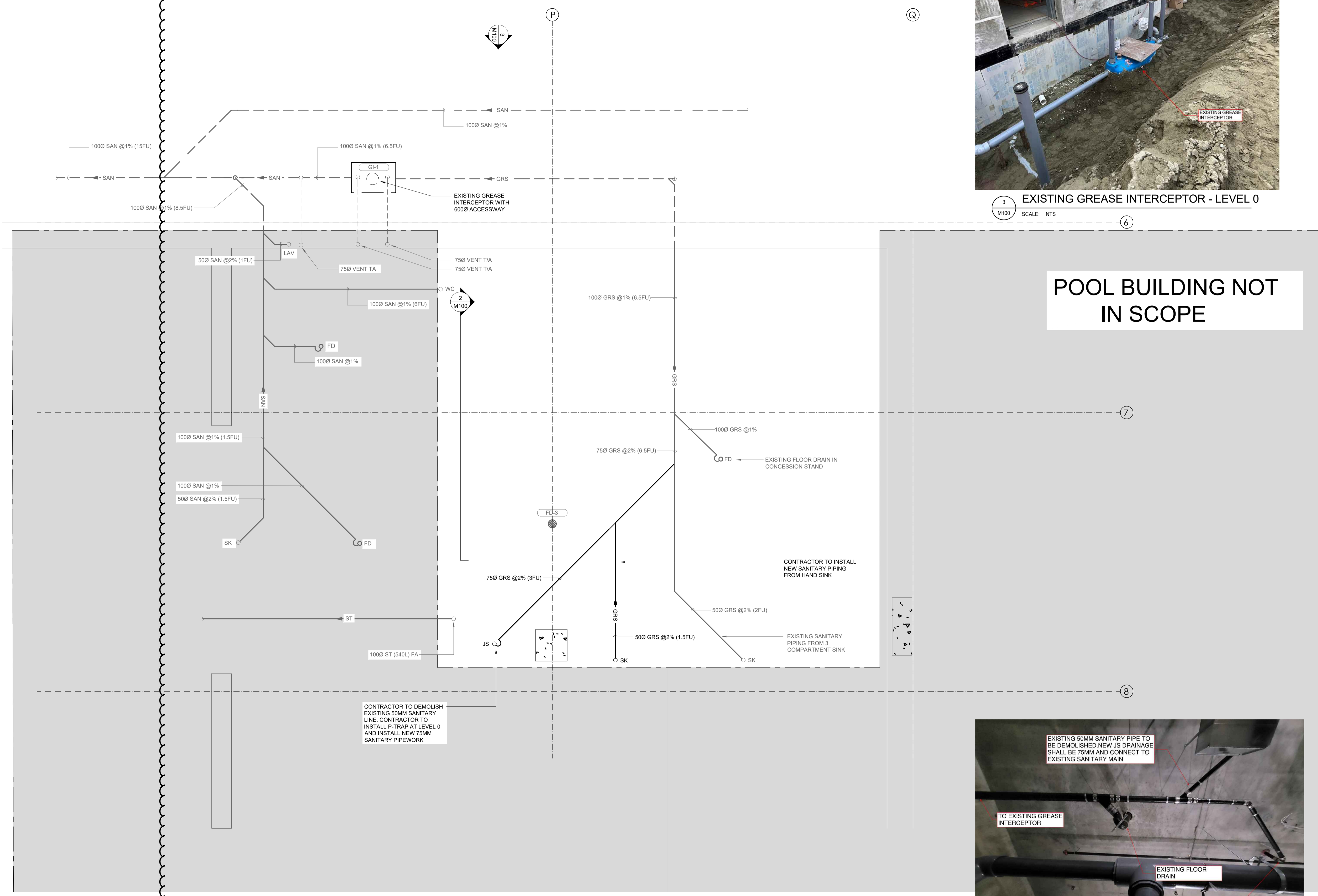
Client Name:
CITY OF COQUITLAM
Project Name:
SPANI POOL CONCESSION TENANT IMPROVEMENT
Project Address:
655 HILLCREST ST, COQUITLAM, BC V3J 3Z6
Street Name:
MECHANICAL EQUIPMENT SCHEDULES
Project No: 3418-005-21 Date: 09/18/24 Scale: NTS Drawn: PDM Checked: EN



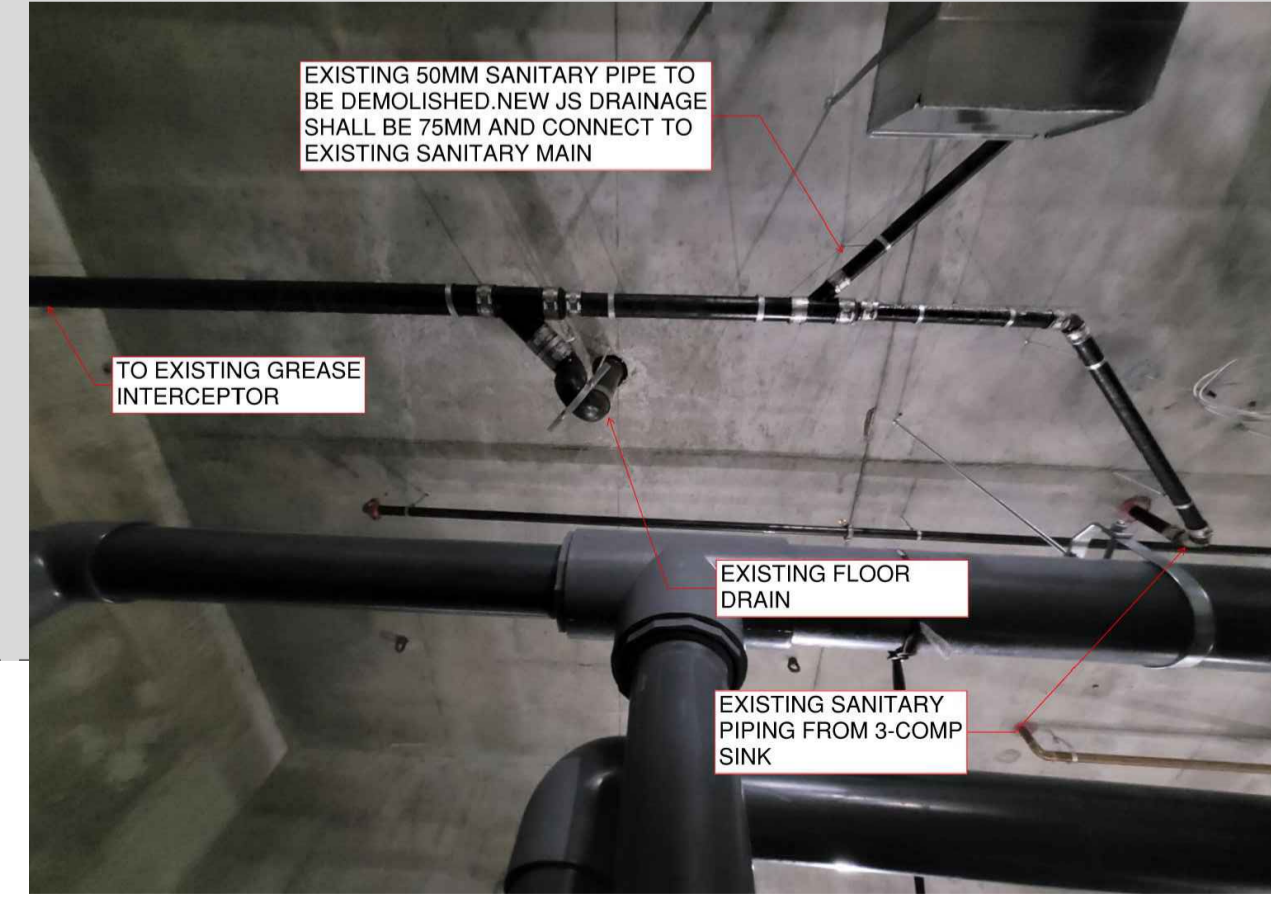
©Copyright reserved.
These drawings and the design contained therein at all times remain the exclusive property of FaulknerBrowns Architects Inc. Reuse, reproduction or publication by any method in whole or in part is prohibited without their written consent.
Do not scale this drawing.
Do not derive dimensions from digital media



3 EXISTING GREASE INTERCEPTOR - LEVEL 0
M100 SCALE: NTS



1 PLUMBING PLAN - LEVEL 0
M100 SCALE: 1:25



2 EXISTING SANITARY PIPEWORK - LEVEL 0
M100 SCALE: NTS

#	Submission / Revision Issue	Issue Date
5	ISSUED FOR ADDENDUM 01	10/22/24
4	ISSUED FOR RFP	10/07/24
3	ISSUED FOR BPRFP REVIEW	09/13/24
2	ISSUED FOR BP & HP	08/23/24
1	ISSUED FOR 50% DD	08/12/24

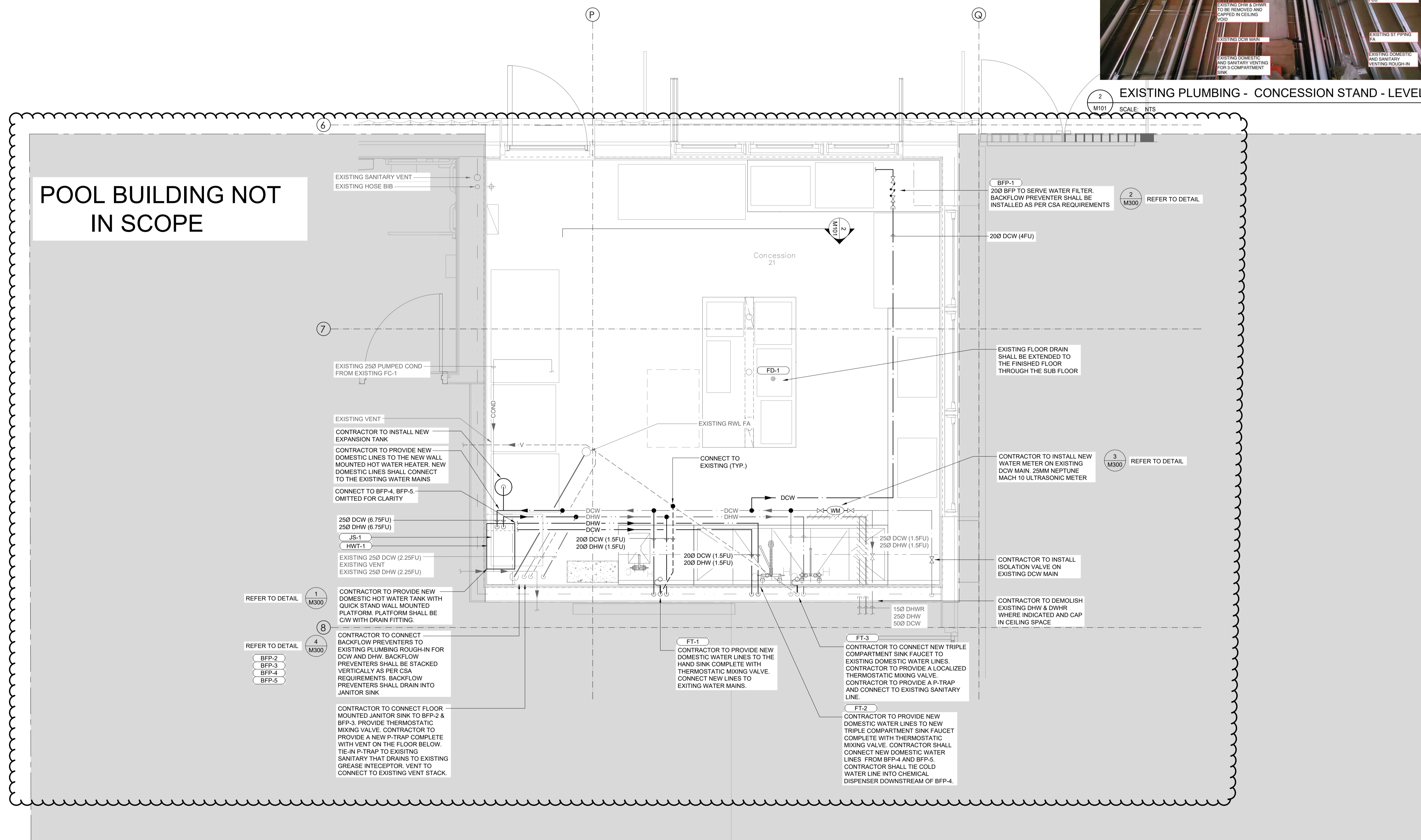
Client Name: CITY OF COQUITLAM
Project Name: SPAN! POOL CONCESSION TENANT IMPROVEMENT
Project Address: 655 HILLCREST ST, COQUITLAM, BC V3J 3Z6
Sheet Name: PLUMBING PLAN - LEVEL 0
Project No: 3418-005-21 Date: 09/18/24 Scale: 1:25 Drawn: PDM Checked: EN
Sheet No:



©Copyright reserved.
These drawings and the design contained therein at all times remain the exclusive property of FaulknerBrowns Architects Inc. Reproduction or publication by any method in whole or in part is prohibited without their written consent.
Do not scale this drawing.
Do not derive dimensions from digital media



EXISTING PLUMBING - CONCESSION STAND - LEVEL 1
M101 SCALE: NTS



PLUMBING PLAN - LEVEL 1
M101 SCALE: 1:25

#	Submission / Revision Issue	Issue Date
5	ISSUED FOR ADDENDUM 01	10/22/24
4	ISSUED FOR RFP	10/07/24
3	ISSUED FOR BPRFP REVIEW	09/13/24
2	ISSUED FOR BP & HP	08/23/24
1	ISSUED FOR 50% DD	08/12/24

Client Name:
CITY OF COQUITLAM

Project Name:
SPANI POOL CONCESSION TENANT IMPROVEMENT

Project Address:
655 HILLCREST ST, COQUITLAM, BC V3J 3Z6

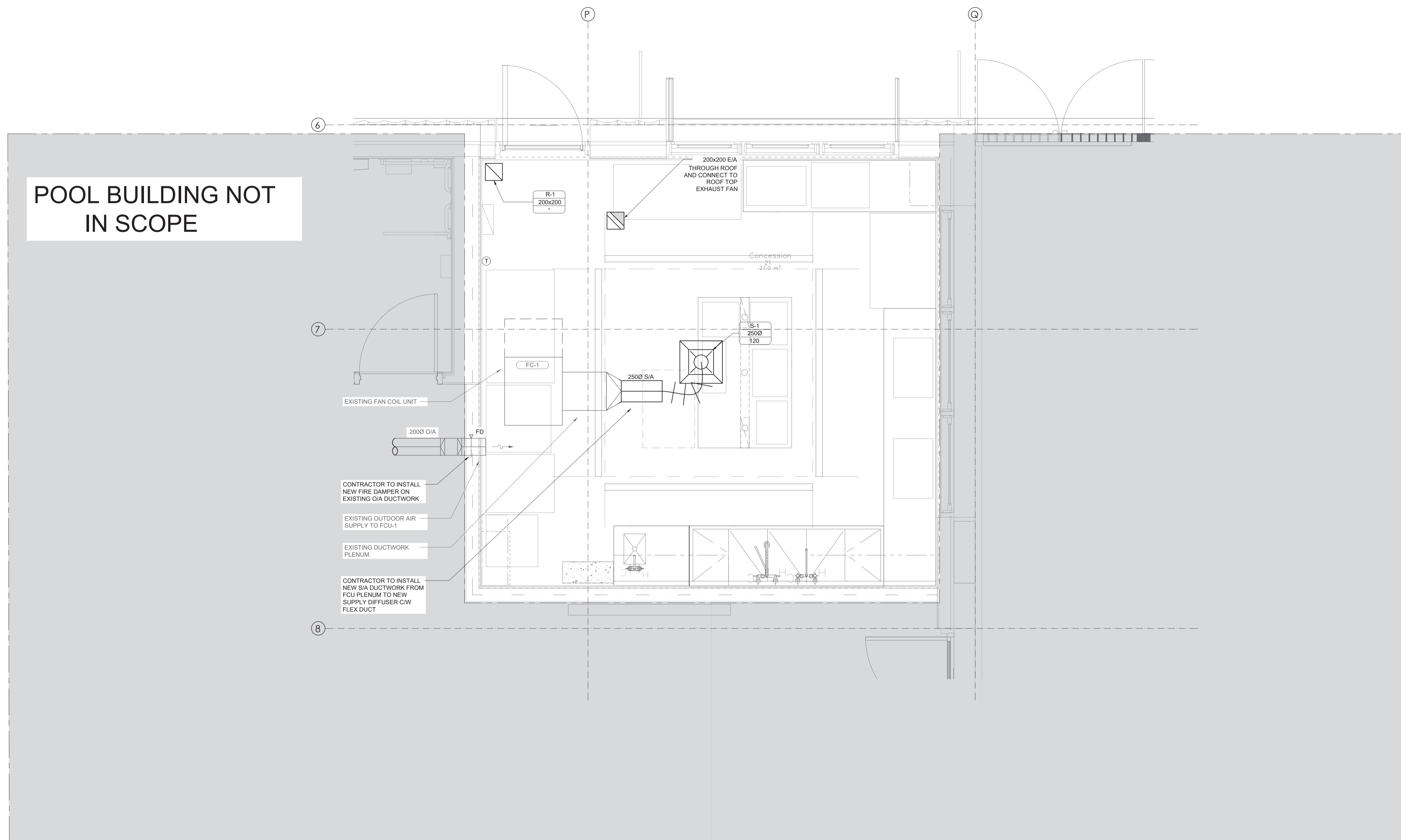
Sheet Name:
PLUMBING PLAN - LEVEL 1

Project No.	Date	Scale	Drawn	Checked
3418-005-21	09/18/24	1:25	PDM	EN

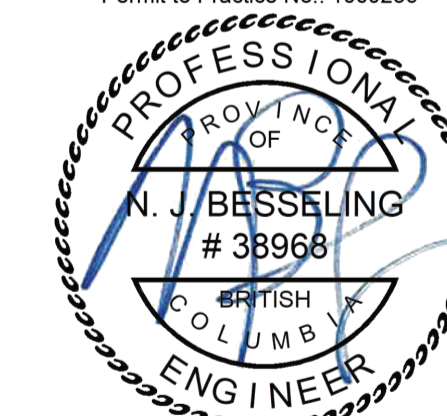
Sheet No.



©Copyright reserved.
These drawings and the design contained therein at all times remain the exclusive property of FaulknerBrowns Architects Inc. Reuse, reproduction or publication by any method in whole or in part is prohibited without their written consent.
Do not scale this drawing.
Do not derive dimensions from digital media.



Permit to Practice No.: 1000236



2024-10-07

4	ISSUED FOR RFP	10/07/24
3	ISSUED FOR BPRFP REVIEW	09/13/24
2	ISSUED FOR BP & HP	08/23/24
1	ISSUED FOR 50% DD	08/12/24

#	Submission / Revision Issue	Issue Date
---	-----------------------------	------------

Client Name:
CITY OF COQUITLAM

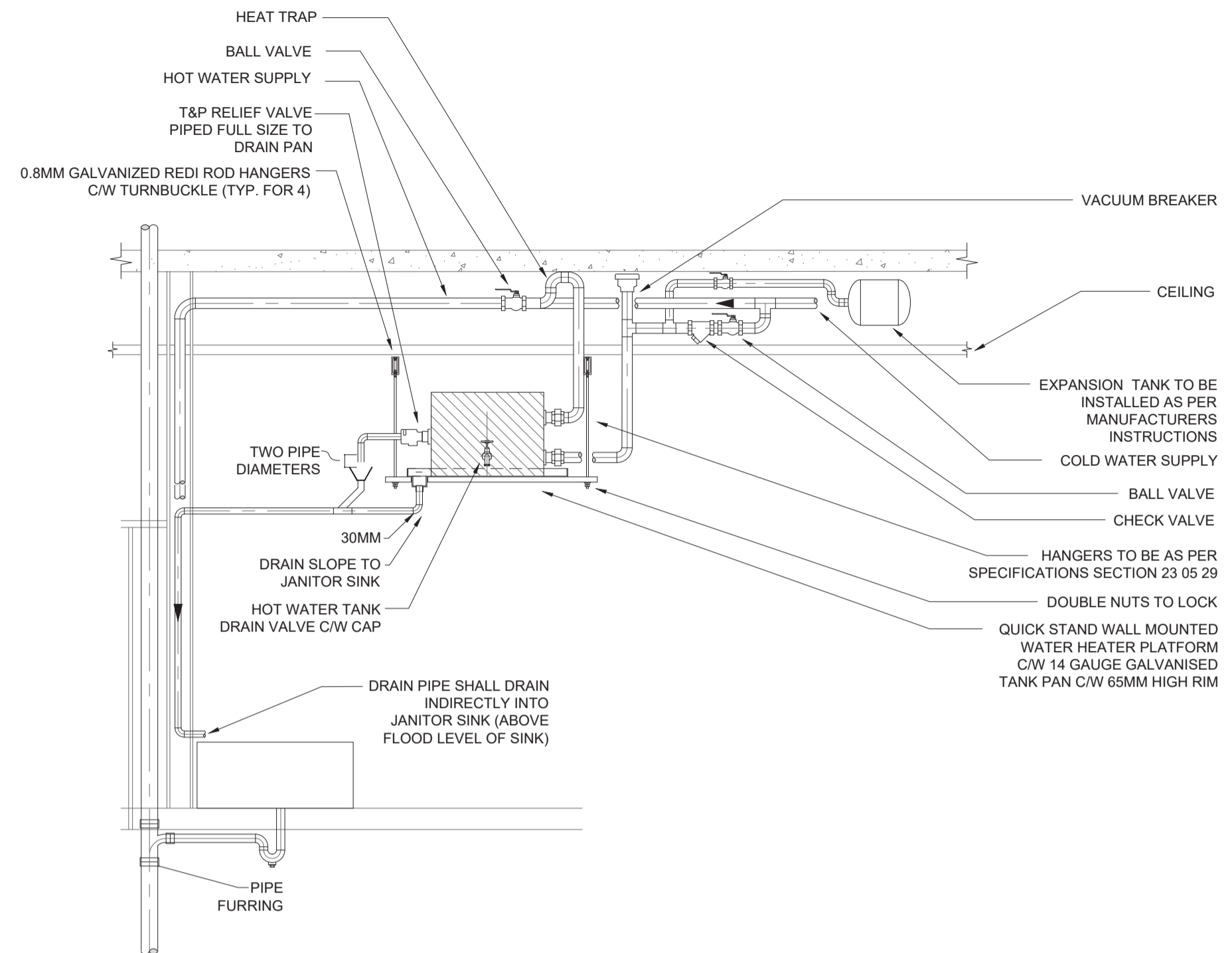
Project Name:
SPANI POOL CONCESSION TENANT IMPROVEMENT

Project Address:
655 HILLCREST ST, COQUITLAM, BC V3J 3Z6

Street Name:
HVAC PLAN

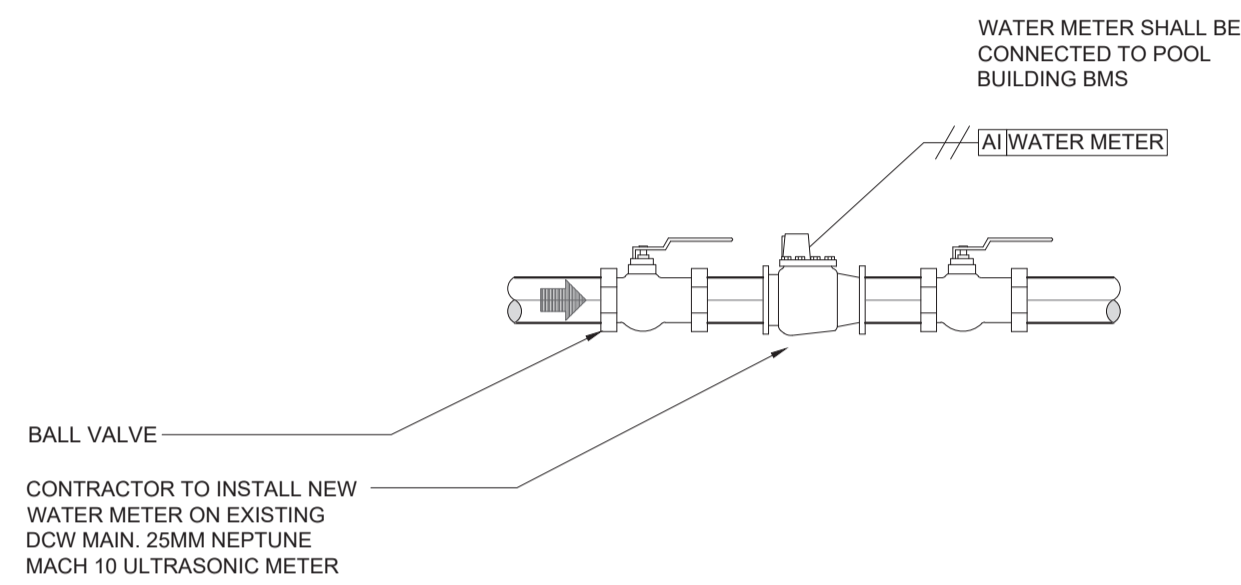
Project No.: 3418-005-21 Date: 09/18/24 Scale: 1:25 Drawn: PDM Checked: EN

HVAC PLAN - LEVEL 1
SCALE: 1:25



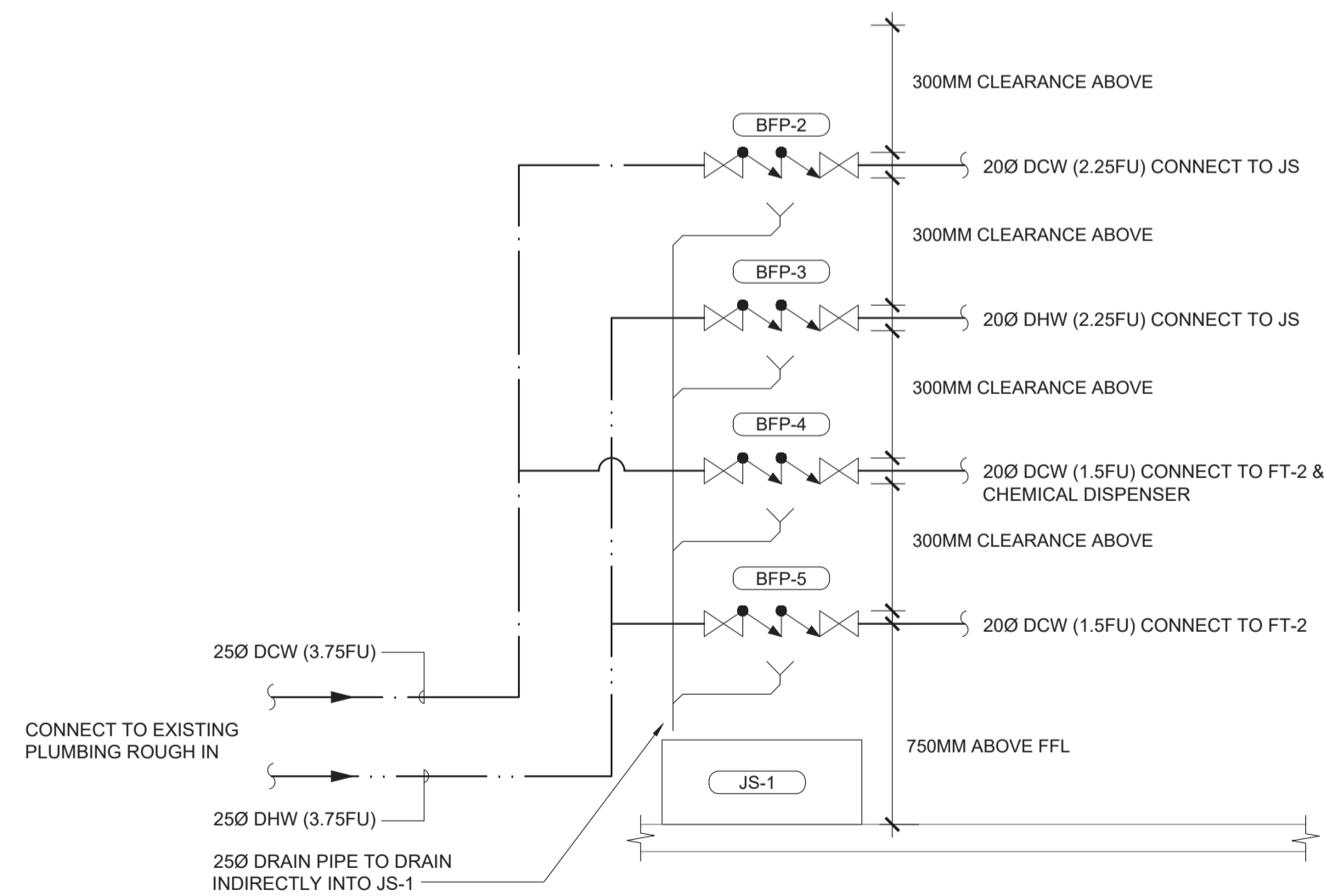
DETAIL NOTES

1. ENSURE ACCESS IS MAINTAINED FOR DOMESTIC HOT WATER TANK. LOCATION TO BE CO-ORDINATED WITH ARCHITECT.
2. MECHANICAL CONTRACTOR SHALL BE RESPONSIBLE TO PROVIDE ACCEPTABLE DRAIN ARRANGEMENT TO CONFORM TO LOCAL INSPECTOR AND PLUMBING BYLAW REQUIREMENTS.

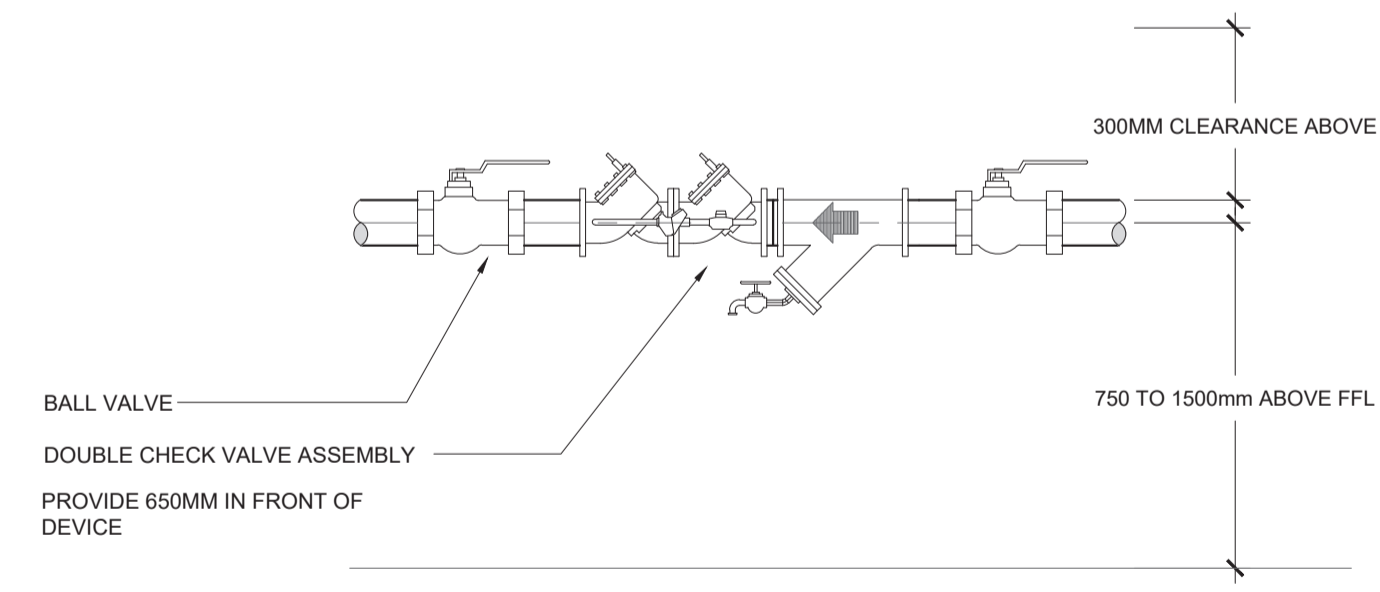


3 WATER METER DETAILS
SCALE: NTS

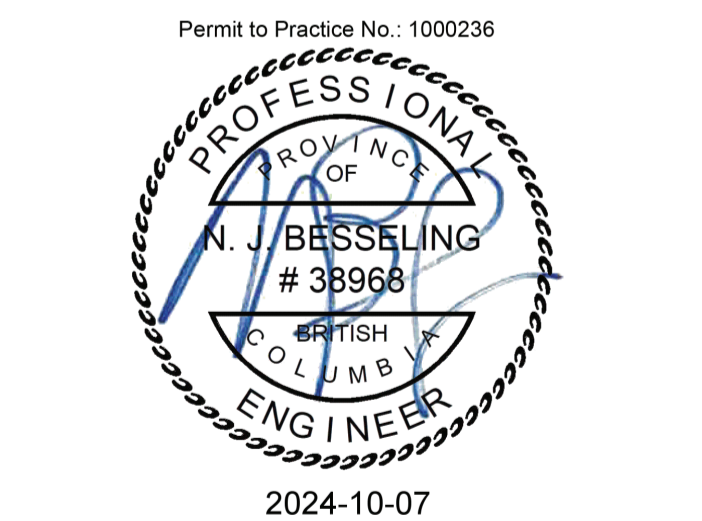
1 WALL MOUNTED DOMESTIC HOT WATER TANK
SCALE: NTS



4 REDUCED PRESSURE BACKFLOW PREVENTER MOUNTING
SCALE: NTS



2 DOUBLE CHECK VALVE ASSEMBLY MOUNTING
SCALE: NTS



#	Submission / Revision Issue	Issue Date
4	ISSUED FOR RFP	10/07/24
3	ISSUED FOR BPR/RFP REVIEW	09/13/24
2	ISSUED FOR BP & HP	08/23/24
1	ISSUED FOR 50% DD	08/12/24

Client Name: CITY OF COQUITLAM
Project Name: SPANI POOL CONCESSION TENANT IMPROVEMENT
Project Address: 655 HILLCREST ST, COQUITLAM, BC V3J 3Z6
Street Name: MECHANICAL DETAILS
Project No: 3418-005-21
Date: 09/18/24
Scale: 1:25
Checked: PDM
Drawn: EN

