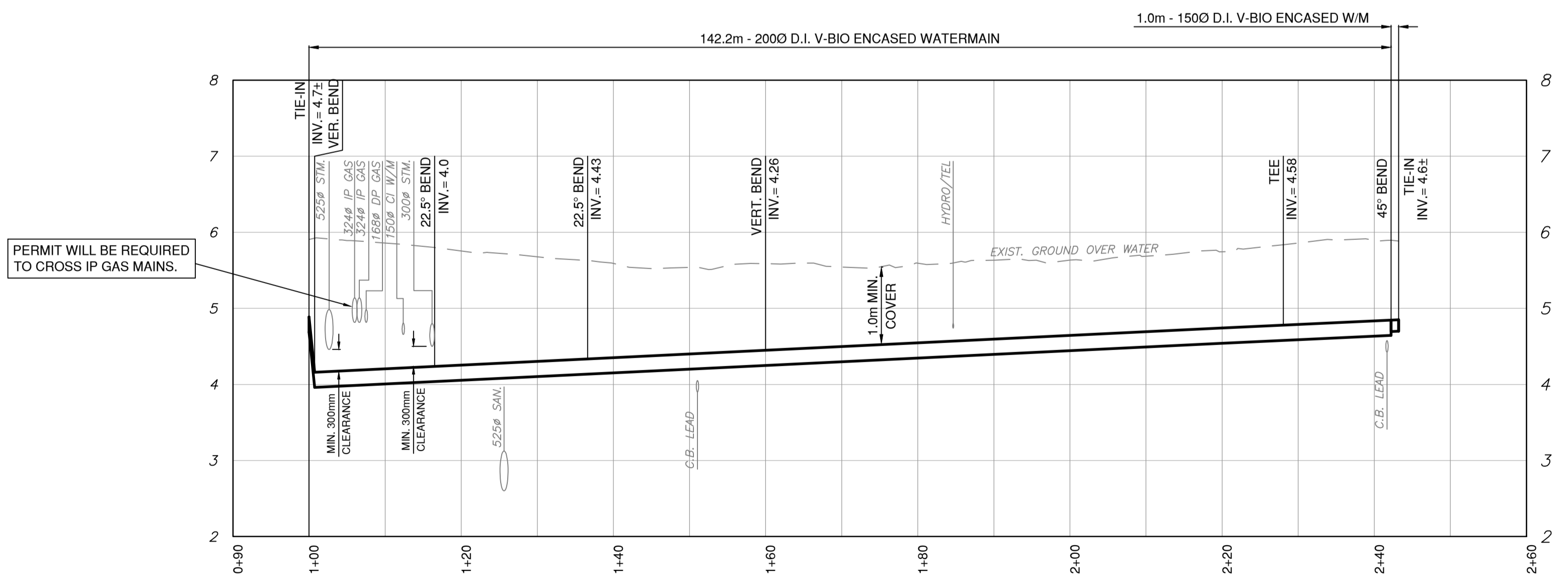
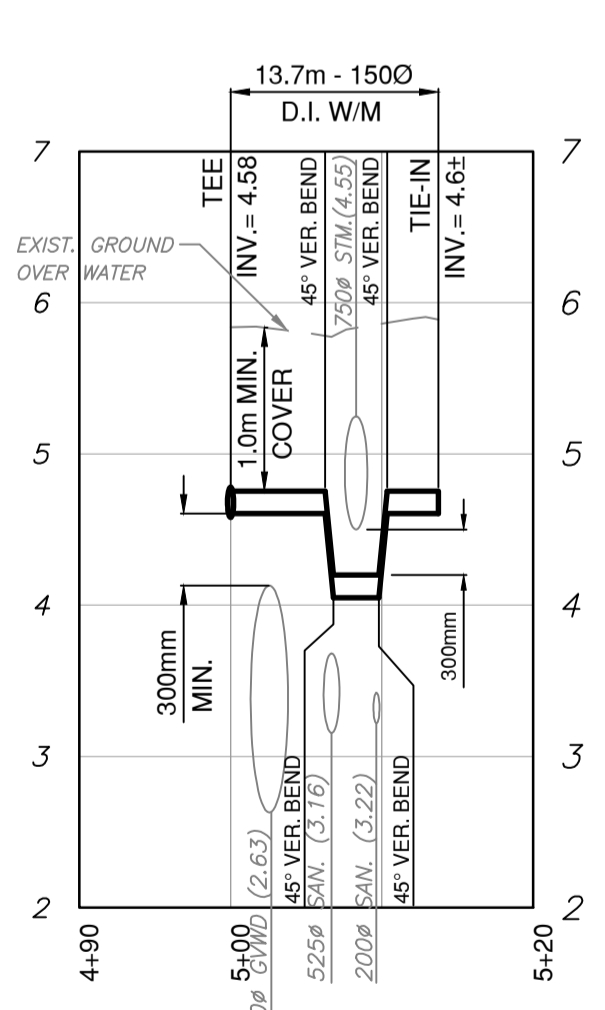
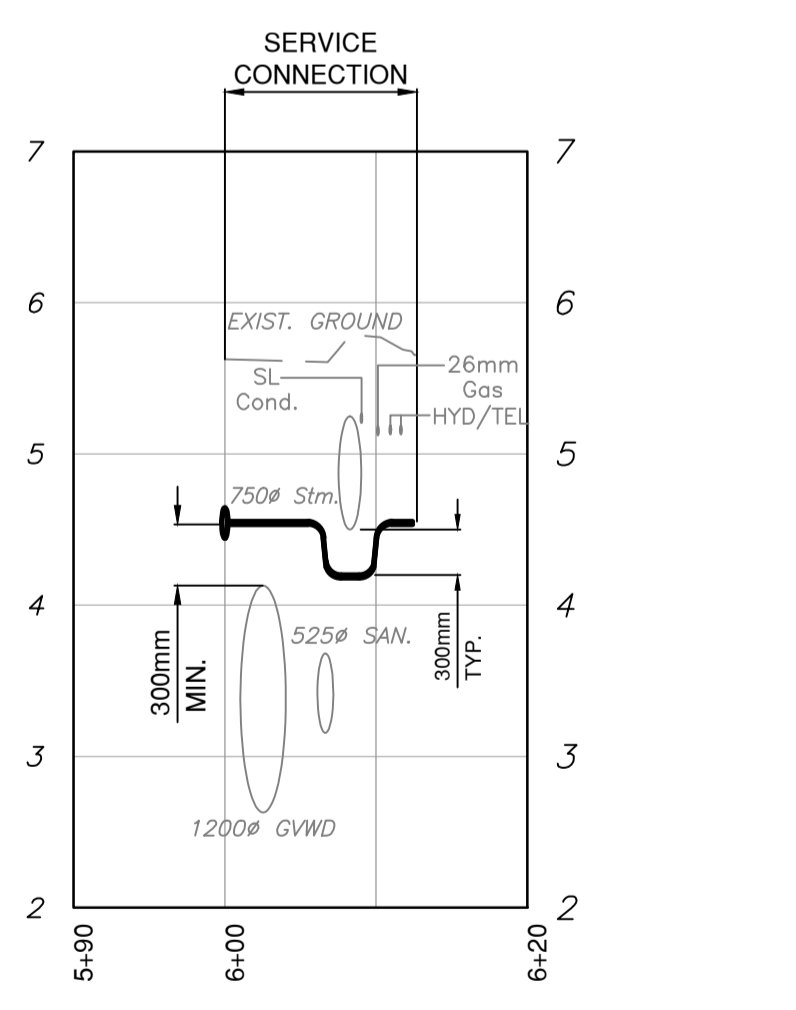
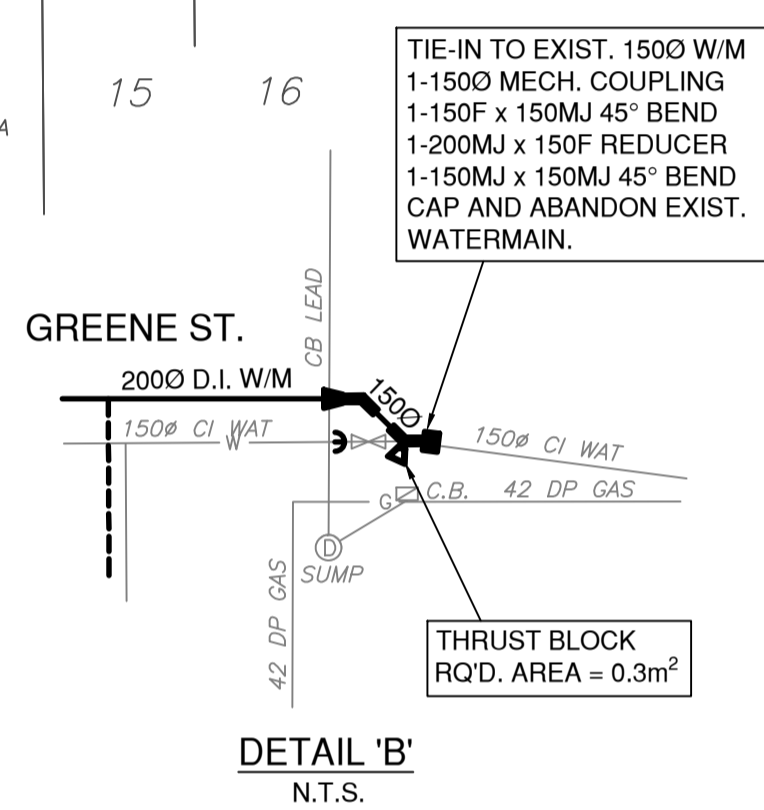
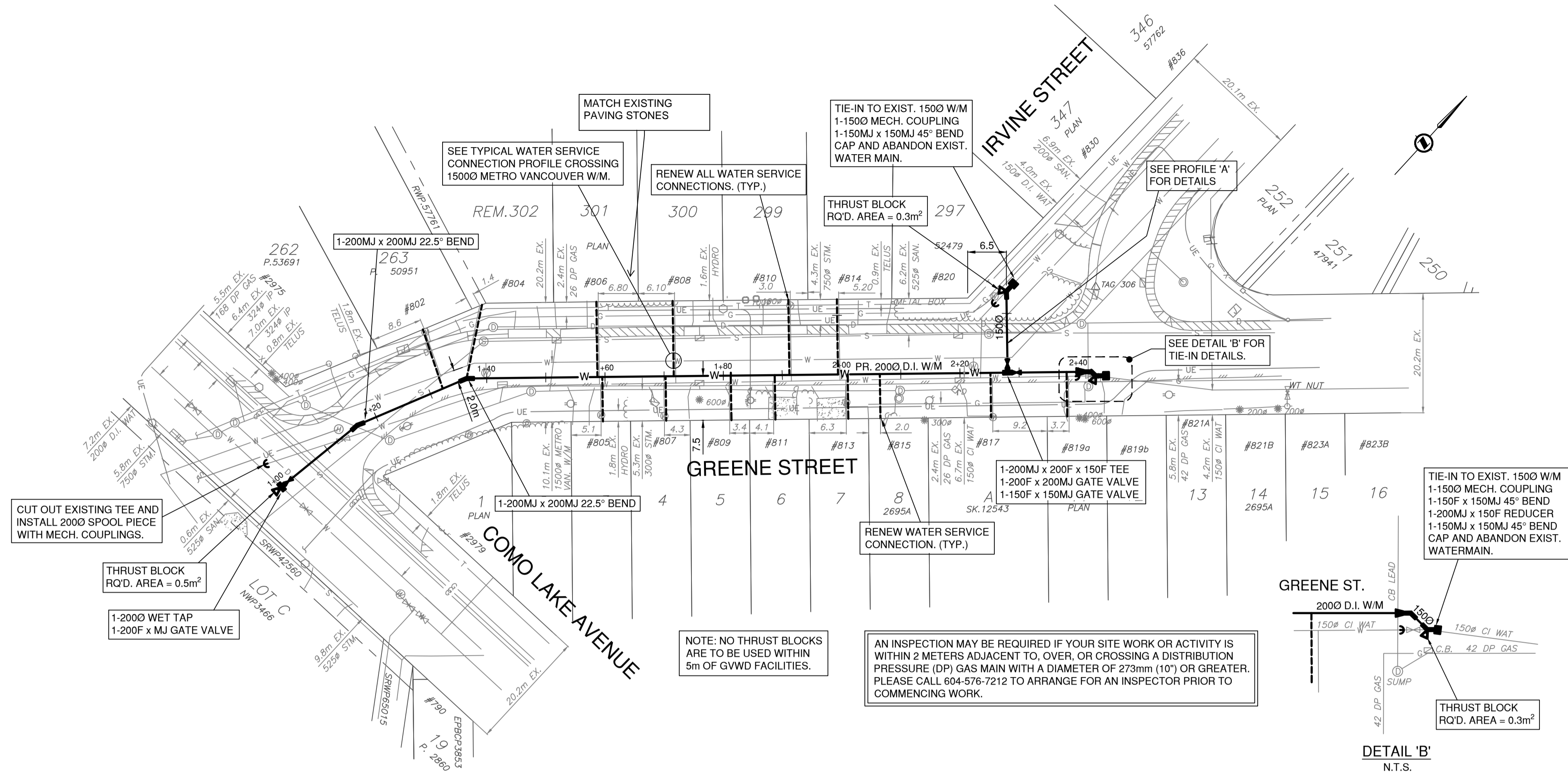


- NOTES:
- WATER MAINS SHALL BE DUCTILE IRON CLASS 50 TR FLEX CEMENT LINED TO AWWA C104.  
V-BIO ENCASE ALL WATER MAINS, VALVES, FITTINGS AND HYDRANT ASSEMBLY (INCLUDING LATERALS, VALVE AND STAND PIPE).  
INSTALLATION FOLLOWS METHOD A (POLYETHYLENE TUBES) UNDER AWWA C105/A21.5.  
BEDDING OF WATERMAIN SHALL BE NO. 3 COURSE SAND COMPACTED 95% M.P.D.
  - CONTRACTOR TO CAP THE ENDS OF THE PIPE WITH PLASTIC WRAP OR SOME TYPE OF MATERIAL WHEN BEING STORED ON SITE.
  - ALL FITTINGS ARE TO BE MECHANICALLY RESTRAINED.
  - WATER SERVICES TO BE INSTALLED IN ACCORDANCE TO COQ-W21 WITH MUNICIPEX INSTEAD OF COPPER WITH #10 AWG TRACER ON EACH SERVICES.
  - ALL NEW CONNECTIONS SHALL HAVE DOUBLE STRAP SADDLES AT THE MAIN, SHALL HAVE BRASS CURB STOPS - MULLER A631 OR EQUIVALENT AND INSTALLED AS PER COQ. STD DWG. COQ-W21 c/w METER SETTER AS PER COQ. STD. DWG. COQ-W2m.
  - CONCRETE THRUST BLOCKS SHALL BE INSTALLED AS PER MMCD 2009 ED. DWG W1.
  - ALL TESTING AND CHLORINATION OF WATERLINES COMPLETED BY THE GENERAL CONTRACTOR AND WITNESSED BY THE CITY OF COQUITLAM.
  - FIRE HYDRANTS AS PER MMCD 2009 ED. DWG. W4.
  - EXISTING UTILITY SERVICE CONNECTIONS ARE NOT SHOWN FOR CLARITY.
  - VERTICAL BENDS WILL BE CONSTRUCTED WITH DEFLECTED JOINTS (NO FITTINGS).
  - PRESSURE AND LEAK TESTING NOT ALLOWED AGAINST LIVE VALVES.
  - CLOSE ALL ABANDONED VALVES AND REMOVE RISERS AND VALVE BOXES.
  - ALL RESTORATION OF BOULEVARD GRASS TO BE DONE WITH SOD UNLESS OTHERWISE APPROVED BY CONTRACT ADMINISTRATOR.
  - WHERE HORIZONTAL SEPARATION BETWEEN WATER MAIN AND EITHER A SANITARY OR A STORM SEWER IS LESS THAN 3 METERS, WRAP ALL WATER MAIN JOINTS WITH HEAT SHRINK PLASTIC, OR PACKED WITH COMPOUND AND WRAPPED WITH PETROLEUM TAPE IN ACCORDANCE WITH THE LATEST VERSION OF AWWA STANDARD C217, AND C214 OR C209.
  - COORDINATE ALL TIE-INS AND SHUT-DOWNS WITH CONTRACT ADMINISTRATOR.

NOTE: PAVEMENT PATCHING

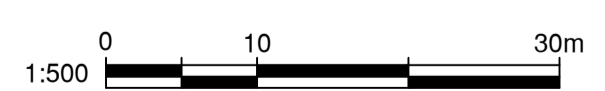
TEMPORARY

- 300mm OF GRANULAR BASE COMPACTED TO 95% MODIFIED PROCTOR
- 75mm ASPHALT PATCH



PERMIT REQUIRED TO CROSS METRO VANCOUVER WATER SUPPLY MAIN.

OPERATING PRESSURE: 164psi  
TEST PRESSURE: 245psi



Benchmark: GEODETIC ELEVATIONS ARE DERIVED FROM G.P.S. OBSERVATION AT TAG306, LOCATED ON CURB NW CORNER IN THE INTERSECTION OF GREENE STREET AND IRVINE STREET ELEVATION=5.837m, DATUM IS [CGVD28 (GVRD 2018)].

Note: Contractor to contact Telus, BC Hydro, FortisBC and BC one call prior to construction to confirm locations of utilities and appurtenances requiring adjustment.

Edge of pavement	---
Watermain and valve	—W—
Drainage sewer, MH	—D—
Drainage ditch	---
Sanitary sewer, MH	—S—
Sanitary forcemain	—SF—
Gasmain and valve	—G—
Hydro duct, MH	—UE—
Telephone duct, MH	—T—

No.	Date	By	Revisions

**Coquitlam**  
Engineering & Public Works  
3000 Guildford Way, Coquitlam, B.C. V3B 7N2

PERMIT TO PRACTICE  
Signature: \_\_\_\_\_  
Date: \_\_\_\_\_  
PERMIT NUMBER: \_\_\_\_\_  
The Association of Professional Engineers and Geoscientists of British Columbia

Seal: \_\_\_\_\_

Design by	Date	Scale
CB		1:500 HOR. 1:50 VER.
Drawn by	Date	Sheet of
R.D.	SEP/2022	1 OF 1
Checked by	Date	Eng. Project No.
C.B.		89010
Approved by	Date	

Project: **GREENE STREET  
COMO LAKE AVE. TO IRVINE ST.**

Description: **WATER MAIN REPLACEMENT**

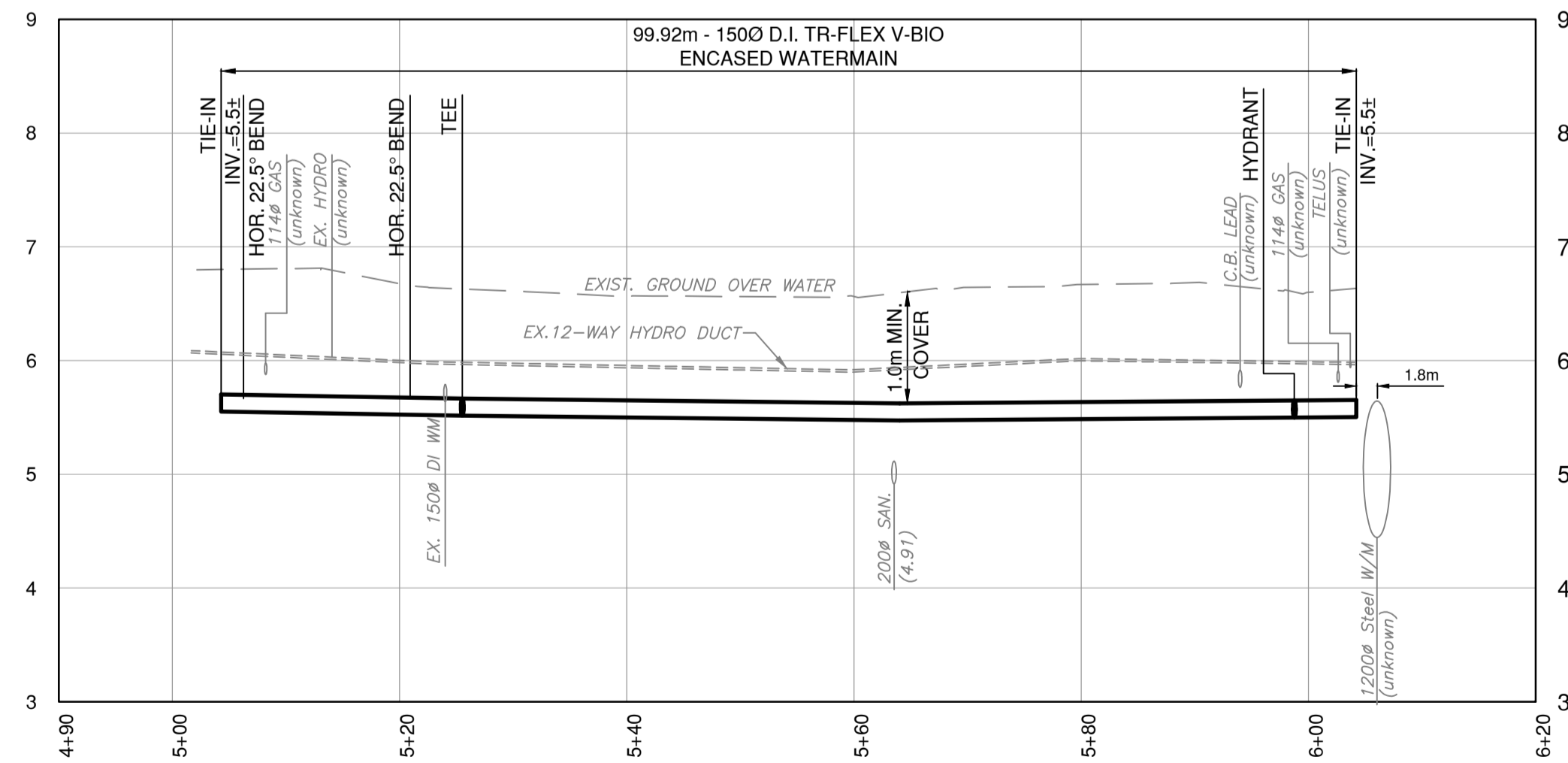
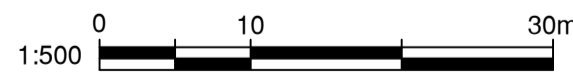
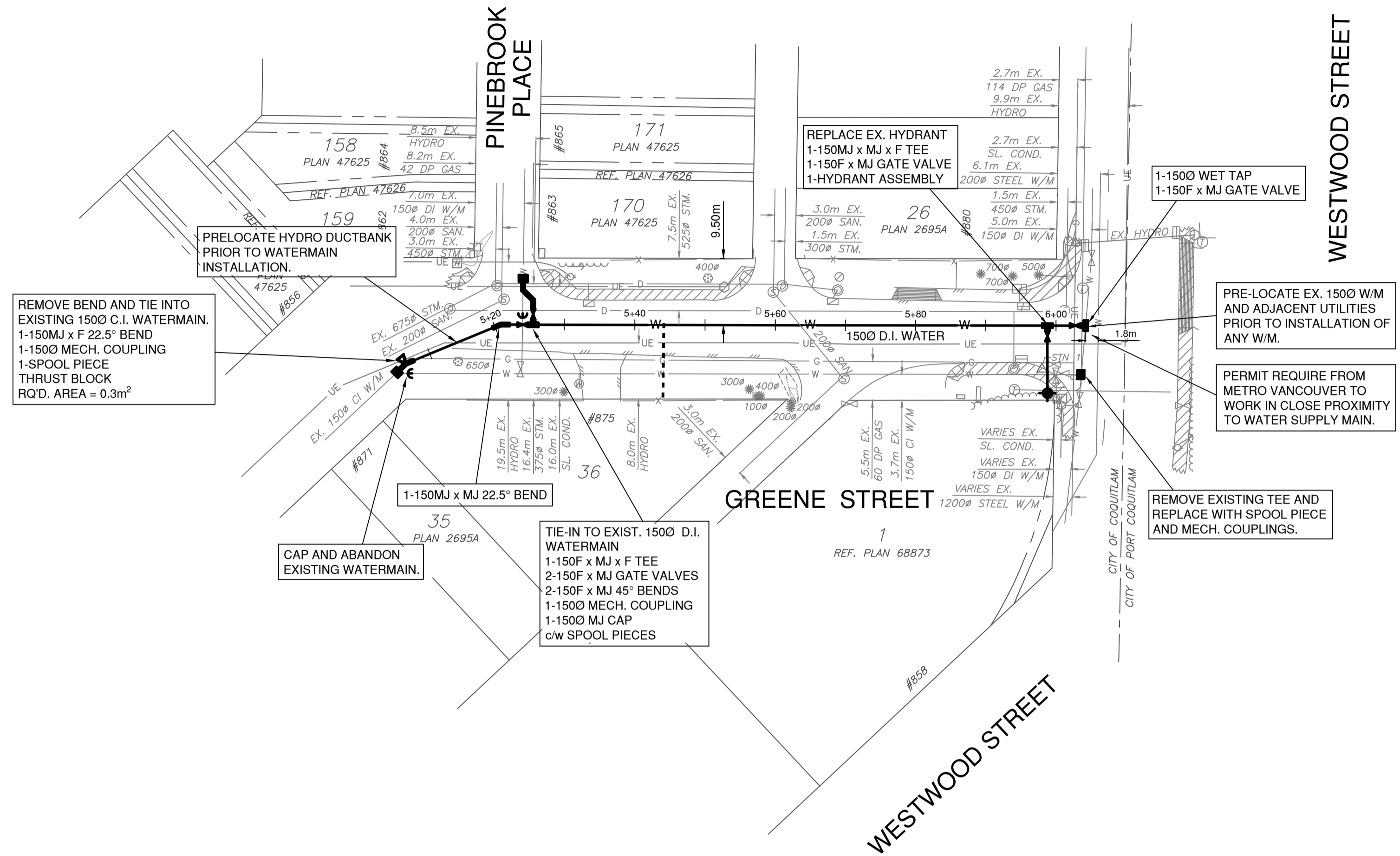
File: 21GREENE08182358C3

- NOTES:
- WATER MAINS SHALL BE DUCTILE IRON CLASS 50 TR FLEX CEMENT LINED TO AWWA C104.  
V-BIO ENCASE ALL WATER MAINS, VALVES, FITTINGS AND HYDRANT ASSEMBLY (INCLUDING LATERALS, VALVE AND STAND PIPE).  
INSTALLATION FOLLOWS METHOD A (POLYETHYLENE TUBES) UNDER AWWA C105/A21.5.  
BEDDING OF WATERMAIN SHALL BE NO. 3 COURSE SAND COMPACTED 95% M.P.D.
  - CONTRACTOR TO CAP THE ENDS OF THE PIPE WITH PLASTIC WRAP OR SOME TYPE OF MATERIAL WHEN BEING STORED ON SITE.
  - ALL FITTINGS ARE TO BE MECHANICALLY RESTRAINED.
  - WATER SERVICES TO BE INSTALLED IN ACCORDANCE TO COQ-W21 WITH MUNICIPEX INSTEAD OF COPPER WITH #10 AWG TRACER ON EACH SERVICES.
  - ALL NEW CONNECTIONS SHALL HAVE DOUBLE STRAP SADDLES AT THE MAIN, SHALL HAVE BRASS CURB STOPS - MULLER A631 OR EQUIVALENT AND INSTALLED AS PER COQ. STD DWG. COQ-W21 c/w METER SETTER AS PER COQ. STD. DWG. COQ-W2m.
  - CONCRETE THRUST BLOCKS SHALL BE INSTALLED AS PER MMCD 2009 ED. DWG W1.
  - ALL TESTING AND CHLORINATION OF WATERLINES COMPLETED BY THE GENERAL CONTRACTOR AND WITNESSED BY THE CITY OF COQUITLAM.
  - FIRE HYDRANTS AS PER MMCD 2009 ED. DWG. W4.
  - EXISTING UTILITY SERVICE CONNECTIONS ARE NOT SHOWN FOR CLARITY.
  - VERTICAL BENDS WILL BE CONSTRUCTED WITH DEFLECTED JOINTS (NO FITTINGS).
  - PRESSURE AND LEAK TESTING NOT ALLOWED AGAINST LIVE VALVES.
  - CLOSE ALL ABANDONED VALVES AND REMOVE RISERS AND VALVE BOXES.
  - ALL RESTORATION OF BOULEVARD GRASS TO BE DONE WITH SOD UNLESS OTHERWISE APPROVED BY CONTRACT ADMINISTRATOR.
  - WHERE HORIZONTAL SEPARATION BETWEEN WATER MAIN AND EITHER A SANITARY OR A STORM SEWER IS LESS THAN 3 METERS, WRAP ALL WATER MAIN JOINTS WITH HEAT SHRINK PLASTIC, OR PACKED WITH COMPOUND AND WRAPPED WITH PETROLIUM TAPE IN ACCORDANCE WITH THE LATEST VERSION OF AWWA STANDARD C217, AND C214 OR C209.
  - COORDINATE ALL TIE-INS AND SHUT-DOWNS WITH CONTRACT ADMINISTRATOR.

NOTE: PAVEMENT PATCHING

**TEMPORARY**

- 300mm OF GRANULAR BASE COMPACTED TO 95% MODIFIED PROCTOR
- 75mm ASPHALT PATCH



OPERATING PRESSURE: 162psi  
TEST PRESSURE: 242psi

Benchmark:  
GEODETIC ELEVATIONS ARE DERIVED FROM G.P.S. OBSERVATION AT TAG306, LOCATED ON CURB NW CORNER IN THE INTERSECTION OF GREENE STREET AND IRVINE STREET ELEVATION=5.837m, DATUM IS [CGVD28 (GVRD 2018)].

Note:  
Contractor to contact Telus, BC Hydro, FortisBC and BC one call prior to construction to confirm locations of utilities and appurtenances requiring adjustment.

Edge of pavement	---
Watermain and valve	—W—
Drainage sewer, MH	—D—
Drainage ditch	---
Sanitary sewer, MH	—S—
Sanitary forcemain	—SF—
Gasmain and valve	—G—
Hydro duct, MH	—H—
Telephone duct, MH	—T—

No.	Date	By	Revisions

**Coquitlam**  
Engineering & Public Works  
3000 Guildford Way, Coquitlam, B.C. V3B 7N2

**PERMIT TO PRACTICE**

Signature: \_\_\_\_\_  
Date: \_\_\_\_\_

PERMIT NUMBER: \_\_\_\_\_  
The Association of Professional Engineers and Geoscientists of British Columbia

Seal: \_\_\_\_\_

Design by	Date	Scale
C.B.		1:500 HOR. 1:50 VER.
Drawn by	Date	Sheet of
R.D.	DEC2021	1 OF 1
Checked by	Date	Eng. Project No.
C.B.		89010
Approved by	Date	

Project **GREENE STREET  
PINEBROOK PL. TO WESTWOOD ST.**

Description **WATER MAIN REPLACEMENT**

File: 16Greene11235822C3