

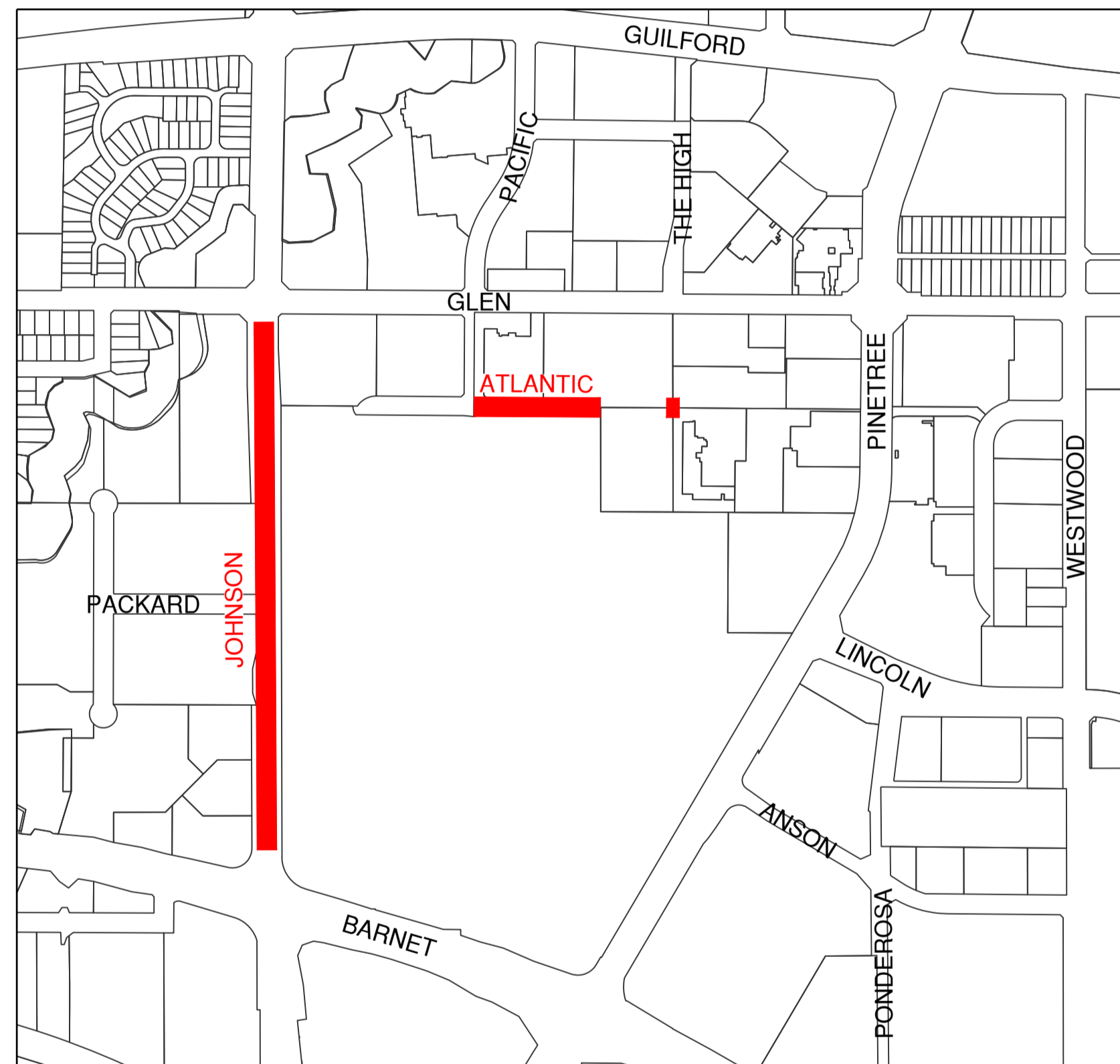
CITY OF COQUITLAM

3000 GUILDFORD WAY, COQUITLAM, BC V3B 7N2

SIDEWALK IMPROVEMENTS

ISSUED FOR TENDER

LEGEND		
EXISTING	PROPOSED	DESCRIPTION
		IRON PROPERTY PIN
		BUILDING
		EDGE OF PAVEMENT
		CURB AND GUTTER
		SANITARY FORCE MAIN
		COMBINED SEWER
		SANITARY SEWER
		SANITARY CONNECTION AND INSPECTION CHAMBER
		STORM SEWER
		STORM CONNECTION AND INSPECTION CHAMBER
		CATCH BASIN / LAWN BASIN LEAD
		FRENCH DRAIN
		STORM SEWER AND CLEANOUT
		CATCH BASIN - TOP INLET AND SIDE INLET
		LAWN DRAIN
		CATCH BASIN MANHOLE
		SWALE
		DITCH
		SIDEWALK (ASPHALT)
		SIDEWALK (CONCRETE)
		RETAINING WALL
		TOP OF SLOPE
		BOTTOM OF SLOPE
		GROUND ELEVATION
		WATERMAIN
		WATER SERVICE CONNECTION
		WATERMAIN GATE VALVE
		WATERMAIN AIR VALVE
		HYDRANT AND VALVE ASSEMBLY
		WATERMAIN CAPPED END
		WATER METER
		WATERMAIN BLOW-OFF
		CATHODIC PROTECTION ANODE
		IRRIGATION SPRINKLER HEAD
		IRRIGATION JUNCTION BOX
		TELECOM UNDERGROUND DUCTS AND MANHOLE
		STREET LIGHT UNDERGROUND DUCTS AND MANHOLE
		GASMAIN AND GAS VALVE
		TRAFFIC SIGNAL UNDERGROUND DUCTS
		HYDRO UNDERGROUND DUCTS AND MANHOLE
		CABLE TV UNDERGROUND DUCTS
		ORNAMENTAL STREET LIGHT - DAVIT
		ORNAMENTAL STREET LIGHT - POST TOP
		UTILITY POLE WITH ANCHOR
		UTILITY POLE WITH LIGHT
		JUNCTION BOX
		TRAFFIC SIGNAL
		ROAD/TRAFFIC SIGN



SITE MAP
Scale: N.T.S.

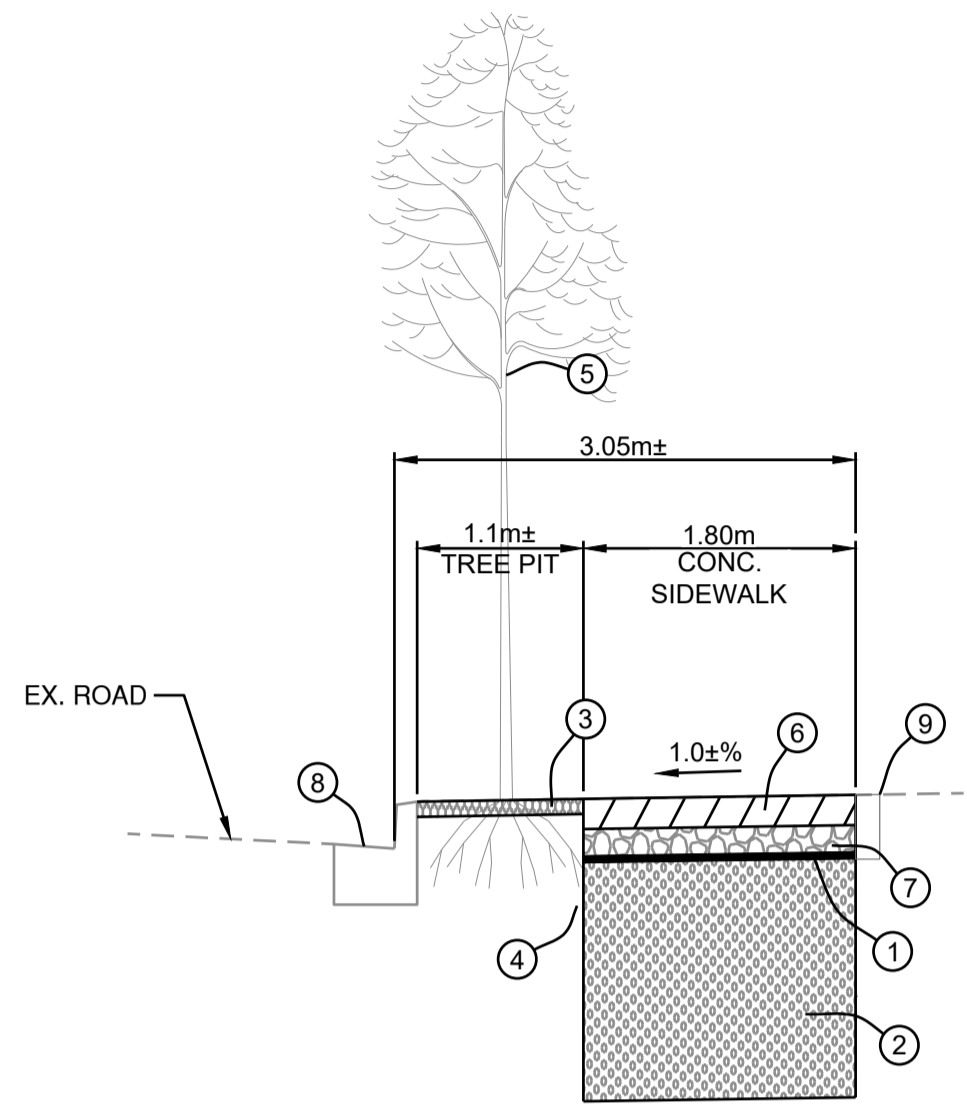
DRAWING INDEX		
SHEET NUMBER	DRAWING TITLE	DRAWING NUMBER
00	COVER	
01	GENERAL NOTES	25-0704-N1
02	DETAILS	25-0704-N2
03	ROADWORKS - PLAN	25-0704-R1-1
04	ROADWORKS - PLAN	25-0704-R1-2
05	ROADWORKS - PLAN	25-0704-R2
06	ROADWORKS - PLAN	25-0704-R3



R.F. BINNIE & ASSOCIATES LTD.
 300 - 4940 Canada Way,
 Burnaby, BC V5G 4K6
 TEL 604 420 1721
BINNIE.com

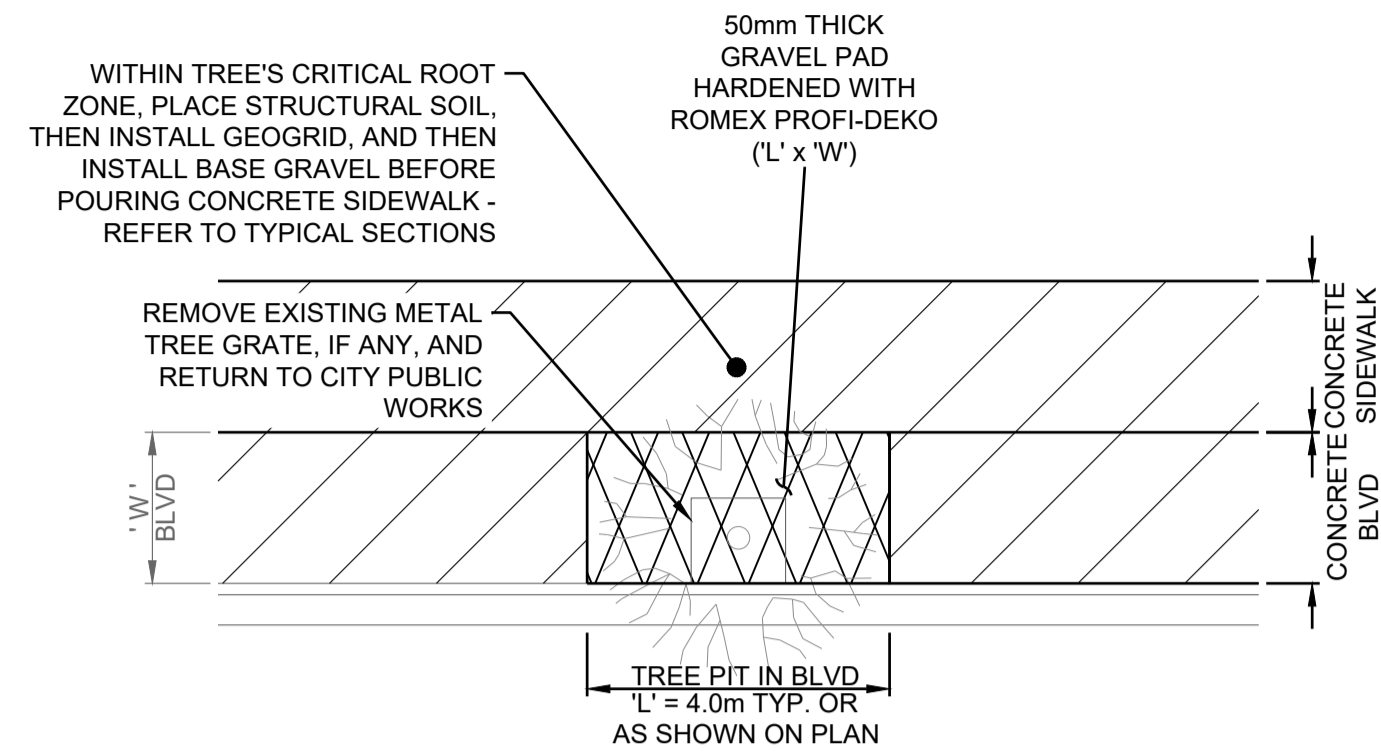


BENCHMARK:
 MONUMENT 93H1001
 N: 5460550.827 E: 51617.196
 ELEV. = 17.923M (CVD28GVRD2018)



TYPICAL SECTION AT EXISTING TREE
 ATLANTIC AVE
 N.T.S.

- ① GEOGRID (NILEX TriAx TX8 OR APPROVED EQUAL)
- ② STRUCTURAL SOIL AS PER SPECIFICATIONS (MAX. 800mm THICK)
 - ACTUAL DEPTH OF EXCAVATION AND FILL TO BE DETERMINED BY ARBORIST IN THE FIELD BASED ON TREE AND ROOT CONDITIONS UNDERGROUND. PROTECT EX. STREET LIGHTING.
- ③ 50mm THICK GRAVEL PAD HARDENED WITH ROMEX PROFI-DEKO AS PER TREE PIT DETAIL - REFER TO DETAIL ON THIS SHEET. SUBSTRATE BELOW ROMEX PAD TO BE HAND-COMPACTED AND FREE DRAINING.
- ④ EX. TREE ROOTS TO BE PROTECTED DURING EXCAVATION UNDER CONTRACTOR'S ARBORIST SUPERVISION AND DIRECTION
- ⑤ EX. TREES TO BE RETAINED. CONTRACTOR TO HAVE AN ARBORIST PRESENT ONSITE FOR ANY WORK WITHIN TREE CRITICAL ROOT ZONE AS DETERMINED BY THE ARBORIST. CONTRACTOR TO CONTACT COQUITLAM URBAN FORESTRY FOR ADDITIONAL REQUIREMENTS.
- ⑥ 100mm THICK CONCRETE SIDEWALK AS PER MMCD DWG No. C1.
- ⑦ 100mm THICK - 19mm MINUS CRUSHED GRANULAR BASE COMPACTED TO 95% MODIFIED PROCTOR DENSITY
- ⑧ EX. BARRIER CURB AND GUTTER TO REMAIN.
- ⑨ EX. EXPOSED AGGREGATE STRIP TO REMAIN.



NOTES:

1. BEFORE INSTALLATION, CONTRACTOR TO PROVIDE COLOUR OPTIONS OF ROMEX PAD TO THE CITY FOR REVIEW AND APPROVAL.
2. A CERTIFIED ARBORIST MUST BE PRESENT ON-SITE DURING ANY WORK WITHIN TREE'S CRITICAL ROOT ZONE.
3. EXISTING TREES MUST BE PROTECTED DURING EXCAVATION WITHIN TREE'S CRITICAL ROOT ZONE AS DETERMINED BY THE ARBORIST.
4. DISPOSE OF ANY EXISTING TREE GRATES.
5. ALL EXCAVATION WITHIN TREE'S CRITICAL ROOT ZONE TO BE BY LOW-PRESSURE AIR-VAC OR HYDRO-VAC UNDER ARBORIST'S SUPERVISION.
6. BEFORE CONSTRUCTION, CONTRACTOR TO CONTACT APPOINTED CITY ARBORIST FOR COORDINATION OF WORK WITHIN CRITICAL ROOT ZONE (CRZ).
7. LENGTH AND WIDTH OF ROMEX TREE PITS ARE SUBJECT TO CHANGE UPON FIELD REVIEW DURING CONSTRUCTION TO ENSURE PROPER TREE ROOT PROTECTION.

TREE PIT DETAIL
 N.T.S.

0 1:50 2m
 DISCLAIMER:
 This drawing must not be reproduced without the written permission of R.F. Binnie & Associates Ltd.
 This drawing is not to be used for construction unless it is stamped "ISSUED FOR CONSTRUCTION" and signed by R.F. Binnie & Associates Ltd. It is the contractor's responsibility to ensure that he is in possession of the latest revision of this drawing.

Edge of pavement	Hydrant	Sanitary service	Hydro Guy Wire
Watermain and valve	Water air valve	Sanitary cleanout	Hydro Kiosk
Drainage ditch	Water blowoff	Utility pole(joint pole)	Vegetation Conifer
Sanitary sewer, MH	Water service	Utility pole with light	Vegetation Deciduous
Sanitary sewer, MH	Catch basin, top inlet	Streetlight, down	Vegetation Shrub
Sanitary forcemain	Catch basin, side inlet	Streetlight, post top	Survey Traverse Hub
Gasmain and valve	Catch basin, round	Comb signal pole	Survey Iron Pin
Hydro duct, MH	Drainage service	Traffic signal pole	Survey Lead Plug
Telephone duct, MH	Drainage cleanout	Junction box	Survey Monument

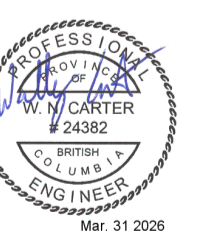
No.	Date	By	Revisions
0	2026-03-31	PP	ISSUED FOR TENDER

Design by	Date
PP	2027-02-13
Drawn by	Date
PP	2027-02-13
Checked by	Date
WC	2026-03-31
Approved by	Date
KD	2026-01-30



Scale	Scale
horiz.	vert.
Sheet 02	of 06
Eng. Project No.	25-0704

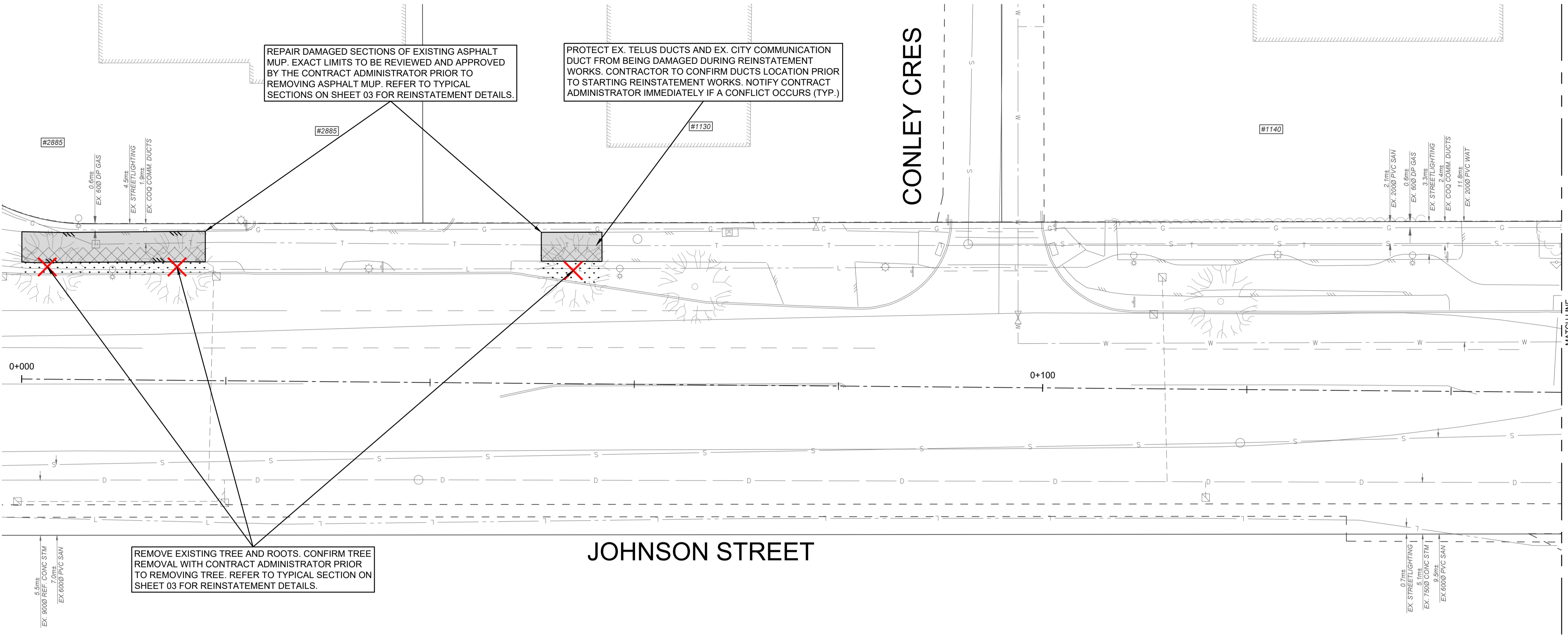
Project	JOHNSON STREET
	MUP REHABILITATION
Description	DETAILS
File:	25-0704-N2
REV.	0



EGBC PERMIT No. 1001128

ISSUED FOR TENDER

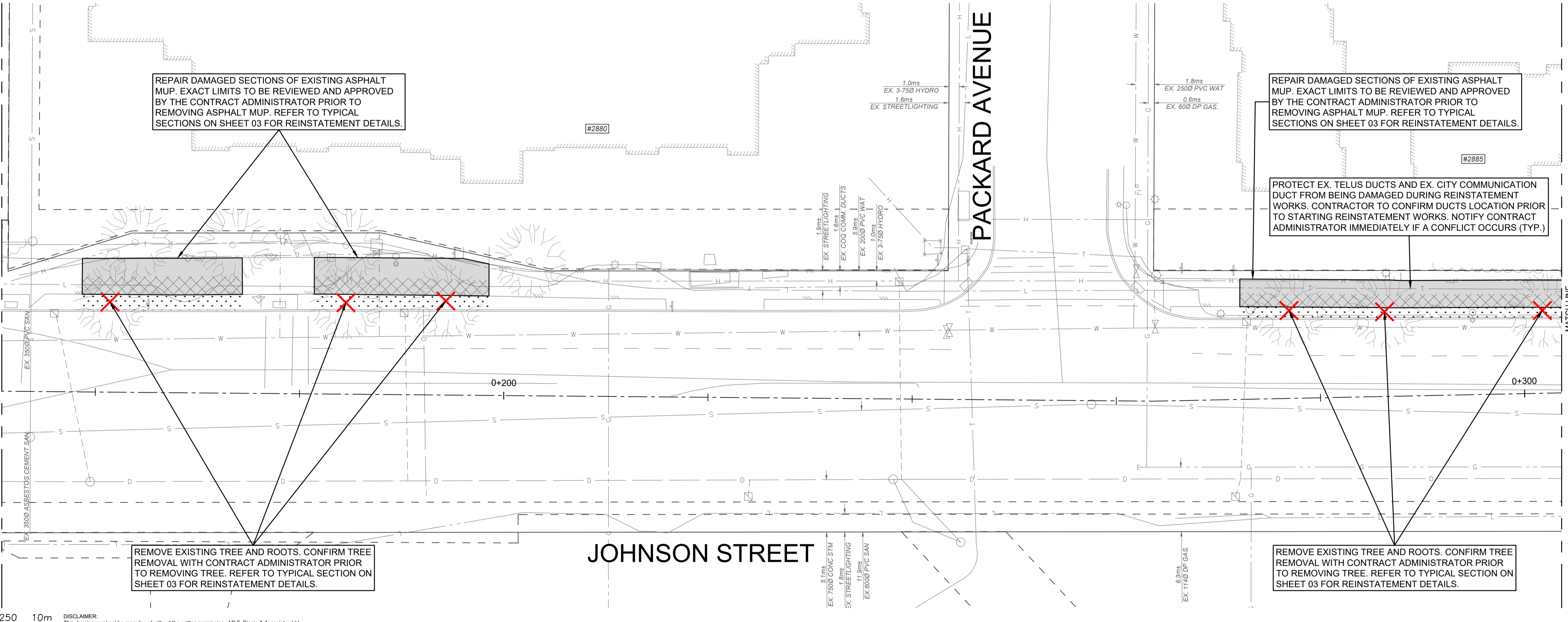
BENCHMARK:
 MONUMENT 93H1001
 N: 5460550.827 E: 51617.196
 ELEV. = 17.923M (CVD28GVRD2018)



MATCH LINE FOR CONTINUATION SEE BELOW

LEGEND:

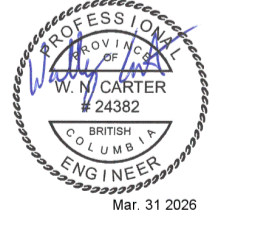
- REMOVE EX. ASPHALT AND EXCAVATE 900mm (MIN.). REMOVE TOP SOIL AND STRUCTURAL SOIL AS DIRECTED BY CONTRACT ADMINISTRATOR AND REPLACE WITH 835 mm (MIN.) THICK - 19mm GRANULAR BASE. PAVE 65mm THICK - UC#2 ASPHALT MUP. REFER TO TYPICAL SECTION ON SHEET 03 FOR DETAILS.
- REMOVE EX. ASPHALT, EXCAVATE 135mm AND PLACE 135mm THICK - 19mm GRANULAR BASE. PAVE 65mm THICK - UC#2 ASPHALT MUP. REFER TO TYPICAL SECTION ON SHEET 03 FOR DETAILS.
- EXCAVATE 900mm (MIN.) AND REMOVE EX. GROWING MEDIUM AS DIRECTED BY CONTRACT ADMINISTRATOR AND REPLACE WITH 750mm (MIN.) THICK - 19mm GRANULAR BASE AND 150mm THICK TOP SOIL AND SOD. REFER TO TYPICAL SECTION ON SHEET 03 FOR DETAILS.
- REMOVE EX. TREE



MATCH LINE FOR CONTINUATION SEE SHEET 04

0 H 1:250 10m
 0 V 1:25 1m

DISCLAIMER: This drawing must not be reproduced without the written permission of R.F. Binnie & Associates Ltd. This drawing is not to be used for construction unless it is stamped "ISSUED FOR CONSTRUCTION" and signed by R.F. Binnie & Associates Ltd. It is the contractor's responsibility to ensure that he is in possession of the latest revision of this drawing.



EGBC PERMIT No. 1001128

ISSUED FOR TENDER

Edge of pavement	Hydrant	Sanitary service	Hydro Guy Wire
Watermain and valve	Water air valve	Sanitary cleanout	Hydro Kiosk
Drainage sewer, MH	Water blowoff	Utility pole(joint pole)	Vegetation Canifer
Drainage ditch	Water service	Utility pole with light	Vegetation Deciduous
Sanitary sewer, MH	Catch basin, top inlet	Streetlight, down	Vegetation Shrub
Sanitary forcemain	Catch basin, side inlet	Streetlight, post top	Survey Traverse Hub
Gasmain and valve	Catch basin, round	Comb signal pole	Survey Iron Pin
Hydro duct, MH	Drainage service	Traffic signal pole	Survey Lead Plug
Telephone duct, MH	Drainage cleanout	Junction box	Survey Monument

No.	Date	By	Revisions
0	2026-03-31	PP	ISSUED FOR TENDER

Design by	Date
PP	2026-01-15
Drawn by	Date
MK	2026-01-13
Checked by	Date
WC	2026-03-31
Approved by	Date
KD	2026-01-30

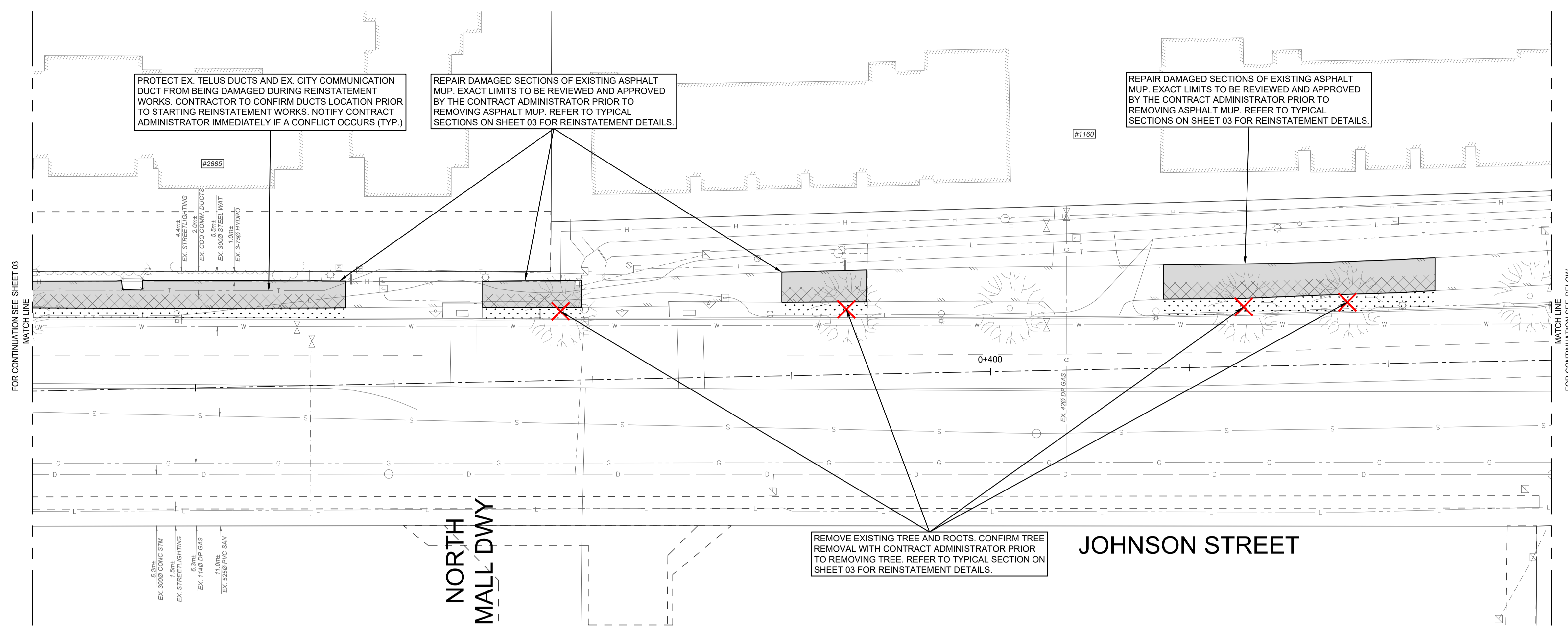
BINNIE
 The people behind your infrastructure.
 TEL 604 420 1721 BINNIE.com

Coquitlam
 Engineering & Public Works
 3000 Guildford Way, Coquitlam, B.C. V3B 7N2

Scale horiz. 1:250 Scale vert. 1:25
 Sheet 03 of 06
 Eng. Project No. 25-0704

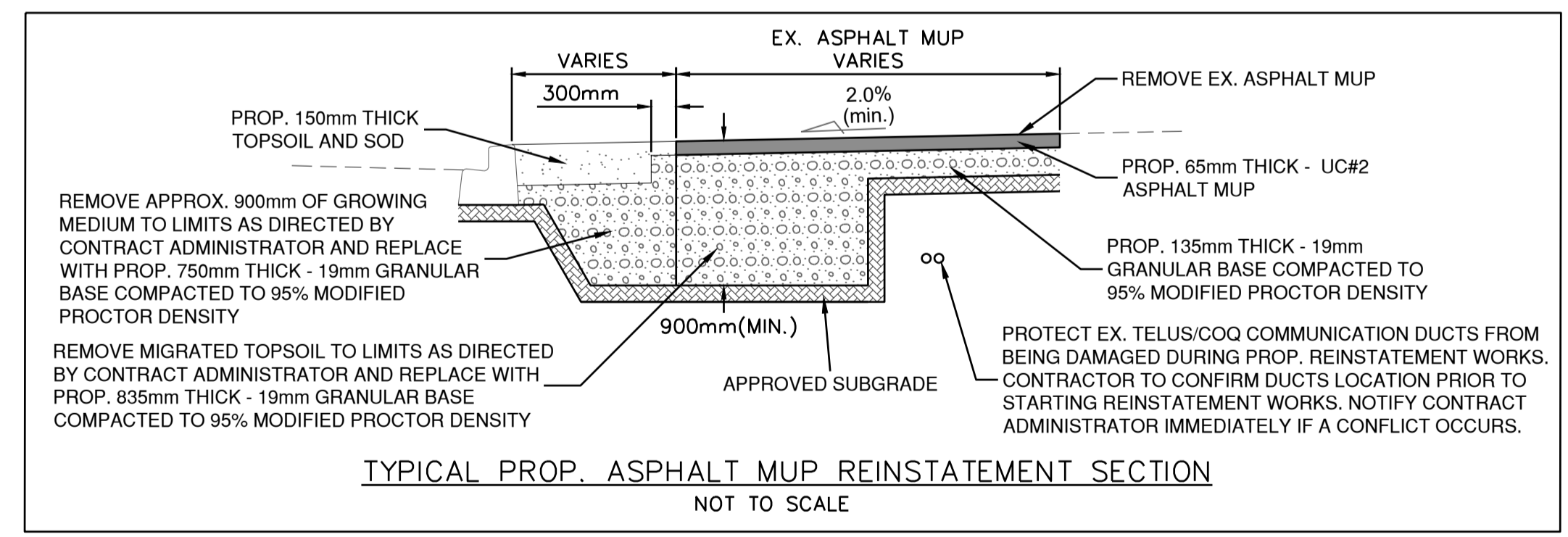
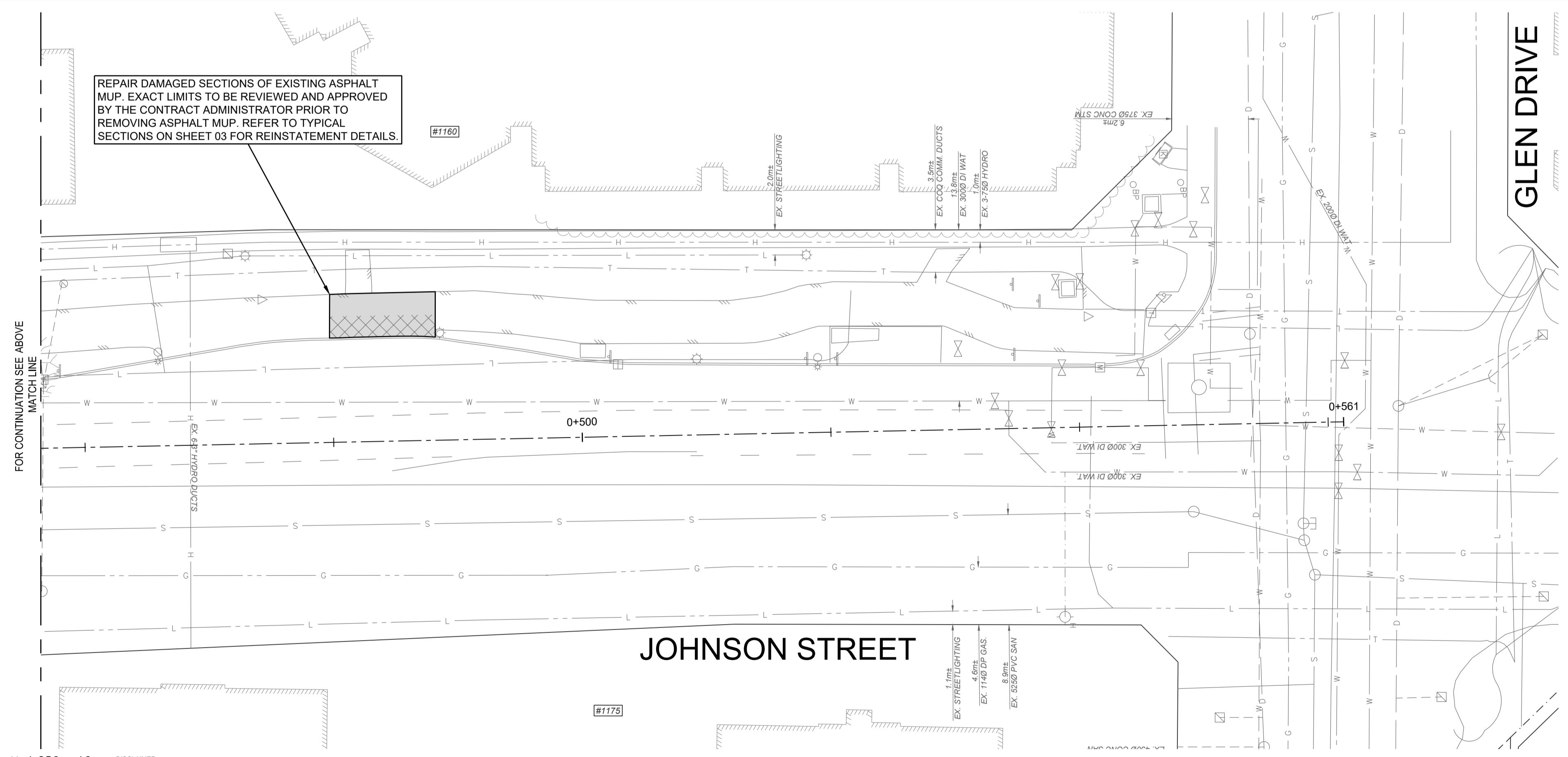
Project **JOHNSON STREET MUP REHABILITATION**
 Description **ROADWORKS - PLAN**
 File: 25-0704-R1-1
 REV. 0

BENCHMARK:
 MONUMENT 93H1001
 N: 5460550.827 E: 51617.196
 ELEV. = 17.923M (CVD28GVRD2018)



LEGEND:

- REMOVE EX. ASPHALT AND EXCAVATE 900mm (MIN.). REMOVE TOP SOIL AND STRUCTURAL SOIL AS DIRECTED BY CONTRACT ADMINISTRATOR AND REPLACE WITH 835 mm (MIN.) THICK - 19mm GRANULAR BASE. PAVE 65mm THICK - UC#2 ASPHALT MUP. REFER TO TYPICAL SECTION ON SHEET 03 FOR DETAILS.
- REMOVE EX. ASPHALT, EXCAVATE 135mm AND PLACE 135mm THICK - 19mm GRANULAR BASE. PAVE 65mm THICK - UC#2 ASPHALT MUP. REFER TO TYPICAL SECTION ON SHEET 03 FOR DETAILS.
- EXCAVATE 900mm (MIN.) AND REMOVE EX. GROWING MEDIUM AS DIRECTED BY CONTRACT ADMINISTRATOR AND REPLACE WITH 750mm (MIN.) THICK - 19mm GRANULAR BASE AND 150mm THICK TOP SOIL AND SOD. REFER TO TYPICAL SECTION ON SHEET 03 FOR DETAILS.
- REMOVE EX. TREE



0 10m H 1:250 V 1:25
 DISCLAIMER: This drawing must not be reproduced without the written permission of R.F. Binnie & Associates Ltd. This drawing is not to be used for construction unless it is stamped "ISSUED FOR CONSTRUCTION" and signed by R.F. Binnie & Associates Ltd. It is the contractor's responsibility to ensure that he is in possession of the latest revision of this drawing.

Edge of pavement	Hydrant	Sanitary service	Hydro Guy Wire
Watermain and valve	Water air valve	Sanitary cleanout	Hydro Kiosk
Drainage sewer, MH	Water blowoff	Utility pole (joint pole)	Vegetation Canister
Sanitary sewer, MH	Water service	Utility pole with light	Vegetation Deciduous
Sanitary forcemain	Catch basin, top inlet	Streetlight, down	Vegetation Shrub
Sanitary and valve	Catch basin, side inlet	Streetlight, post top	Survey Traverse Hub
Hydro duct, MH	Catch basin, round	Comb signal pole	Survey Iron Pin
Telephone duct, MH	Drainage service	Traffic signal pole	Survey Lead Plug
	Drainage cleanout	Junction box	Survey Monument

No.	Date	By	Revisions
0	2026-03-31	PP	ISSUED FOR TENDER

Design by	Date
PP	2026-01-15
Drawn by	Date
MK	2026-01-13
Checked by	Date
WC	2026-03-31
Approved by	Date
KD	2026-01-30

BINNIE
 The people behind your infrastructure.
 TEL 604 420 1721 BINNIE.com

Coquitlam
 Engineering & Public Works
 3000 Guildford Way, Coquitlam, B.C. V3B 7N2

Scale 1:250 Scale 1:25
 Sheet 04 of 06
 Eng. Project No. 25-0704

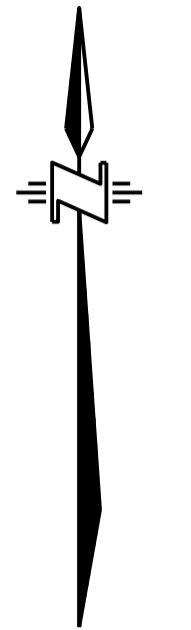
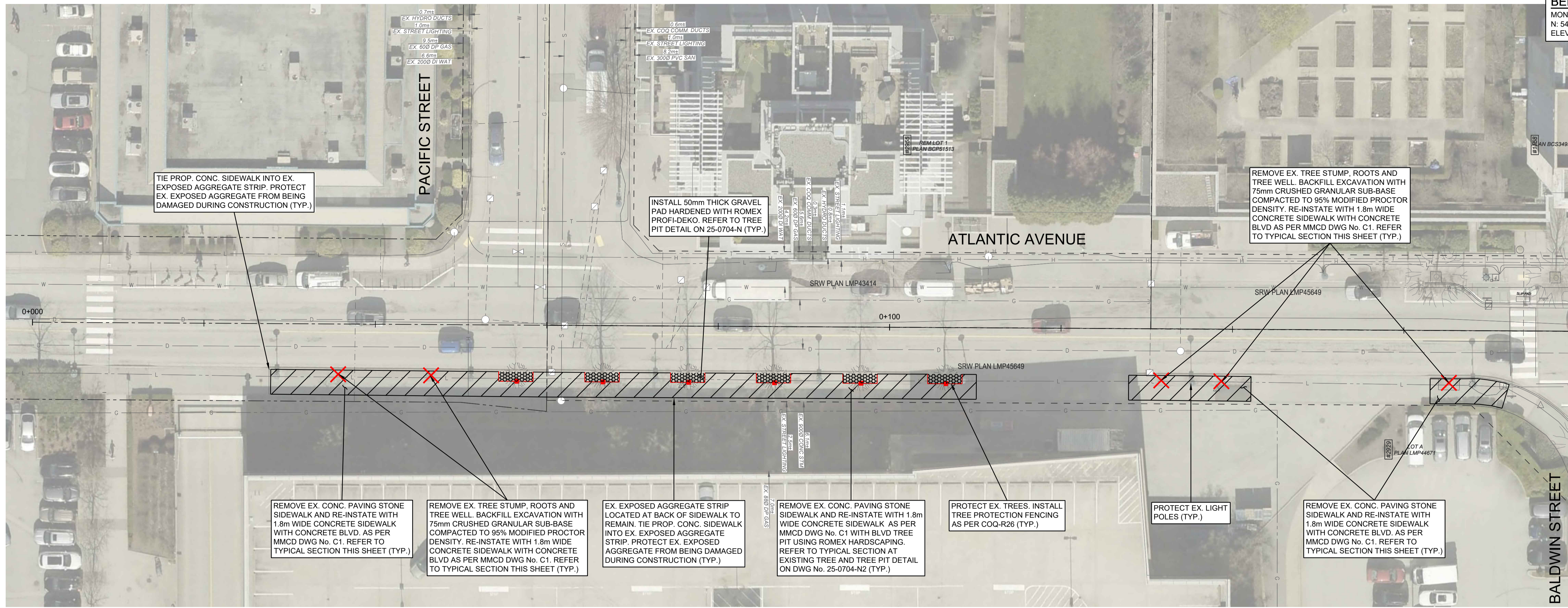
Project **JOHNSON STREET MUP REHABILITATION**
 Description **ROADWORKS - PLAN**
 File: 25-0704-R1-2
 REV. 0



EGBC PERMIT No. 1001128

ISSUED FOR TENDER

BENCHMARK:
 MONUMENT 93H1001
 N: 5460550.827 E: 51617.196
 ELEV. = 17.923M (CVD28GVRD2018)



LEGEND:

- REMOVE EX. TREE STUMP, ROOTS AND TREE WELL
- TREE PROTECTION FENCING

TIE PROP. CONC. SIDEWALK INTO EX. EXPOSED AGGREGATE STRIP. PROTECT EX. EXPOSED AGGREGATE FROM BEING DAMAGED DURING CONSTRUCTION (TYP.)

INSTALL 50mm THICK GRAVEL PAD HARDENED WITH ROMEX PROFI-DEKO. REFER TO TREE PIT DETAIL ON 25-0704-N (TYP.)

REMOVE EX. TREE STUMP, ROOTS AND TREE WELL. BACKFILL EXCAVATION WITH 75mm CRUSHED GRANULAR SUB-BASE COMPACTED TO 95% MODIFIED PROCTOR DENSITY. RE-INSTATE WITH 1.8m WIDE CONCRETE SIDEWALK WITH CONCRETE BLVD AS PER MMCD DWG No. C1. REFER TO TYPICAL SECTION THIS SHEET (TYP.)

REMOVE EX. CONC. PAVING STONE SIDEWALK AND RE-INSTATE WITH 1.8m WIDE CONCRETE SIDEWALK WITH CONCRETE BLVD. AS PER MMCD DWG No. C1. REFER TO TYPICAL SECTION THIS SHEET (TYP.)

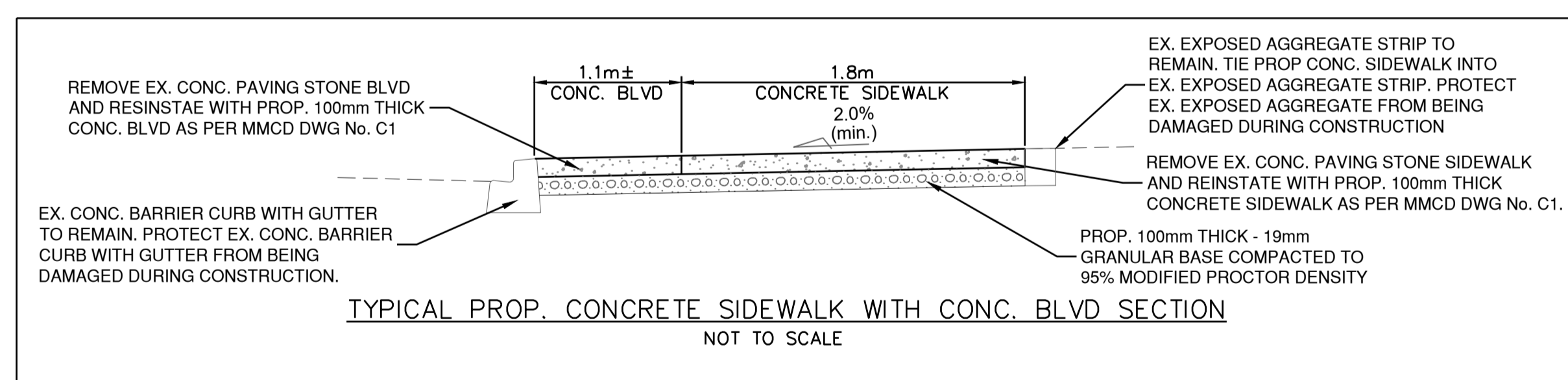
EX. EXPOSED AGGREGATE STRIP LOCATED AT BACK OF SIDEWALK TO REMAIN. TIE PROP. CONC. SIDEWALK INTO EX. EXPOSED AGGREGATE STRIP. PROTECT EX. EXPOSED AGGREGATE FROM BEING DAMAGED DURING CONSTRUCTION (TYP.)

REMOVE EX. CONC. PAVING STONE SIDEWALK AND RE-INSTATE WITH 1.8m WIDE CONCRETE SIDEWALK AS PER MMCD DWG No. C1 WITH BLVD TREE PIT USING ROMEX HARDSCAPING. REFER TO TYPICAL SECTION AT EXISTING TREE AND TREE PIT DETAIL ON DWG No. 25-0704-N2 (TYP.)

PROTECT EX. TREES. INSTALL TREE PROTECTION FENCING AS PER COQ-R26 (TYP.)

PROTECT EX. LIGHT POLES (TYP.)

REMOVE EX. CONC. PAVING STONE SIDEWALK AND RE-INSTATE WITH 1.8m WIDE CONCRETE SIDEWALK WITH CONCRETE BLVD. AS PER MMCD DWG No. C1. REFER TO TYPICAL SECTION THIS SHEET (TYP.)



0 10m
 H 1:250
 V 1:25

DISCLAIMER:
 This drawing must not be reproduced without the written permission of R.F. Binnie & Associates Ltd.
 This drawing is not to be used for construction unless it is stamped "ISSUED FOR CONSTRUCTION" and signed by R.F. Binnie & Associates Ltd. It is the contractor's responsibility to ensure that he is in possession of the latest revision of this drawing.

Edge of pavement	Hydrant	Sanitary service	Hydro Guy Wire
Watermain and valve	Water air valve	Sanitary cleanout	Hydro Kiosk
Drainage sewer, MH	Water blowoff	Utility pole (joint pole)	Vegetation Canister
Drainage ditch	Water service	Utility pole with light	Vegetation Deciduous
Sanitary sewer, MH	Catch basin, top inlet	Streetlight, down	Vegetation Shrub
Sanitary forcemain	Catch basin, side inlet	Streetlight, post top	Survey Traverse Hub
Gasmain and valve	Catch basin, round	Comb signal pole	Survey Iron Pin
Hydro duct, MH	Drainage service	Traffic signal pole	Survey Lead Plug
Telephone duct, MH	Drainage cleanout	Junction box	Survey Monument

No.	Date	By	Revisions
0	2026-03-31	PP	ISSUED FOR TENDER

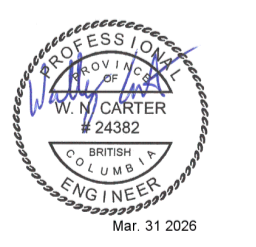
Design by	Date
PP	2026-01-15
Drawn by	Date
MK	2026-01-13
Checked by	Date
WC	2026-03-31
Approved by	Date
KD	2026-01-30

BINNIE
 The people behind your infrastructure.
 TEL 604 420 1721 BINNIE.com

Coquitlam
 Engineering & Public Works
 3000 Guildford Way, Coquitlam, B.C. V3B 7N2

Scale horiz. 1:250 Scale vert. 1:25
 Sheet 05 of 06
 Eng. Project No. 25-0704

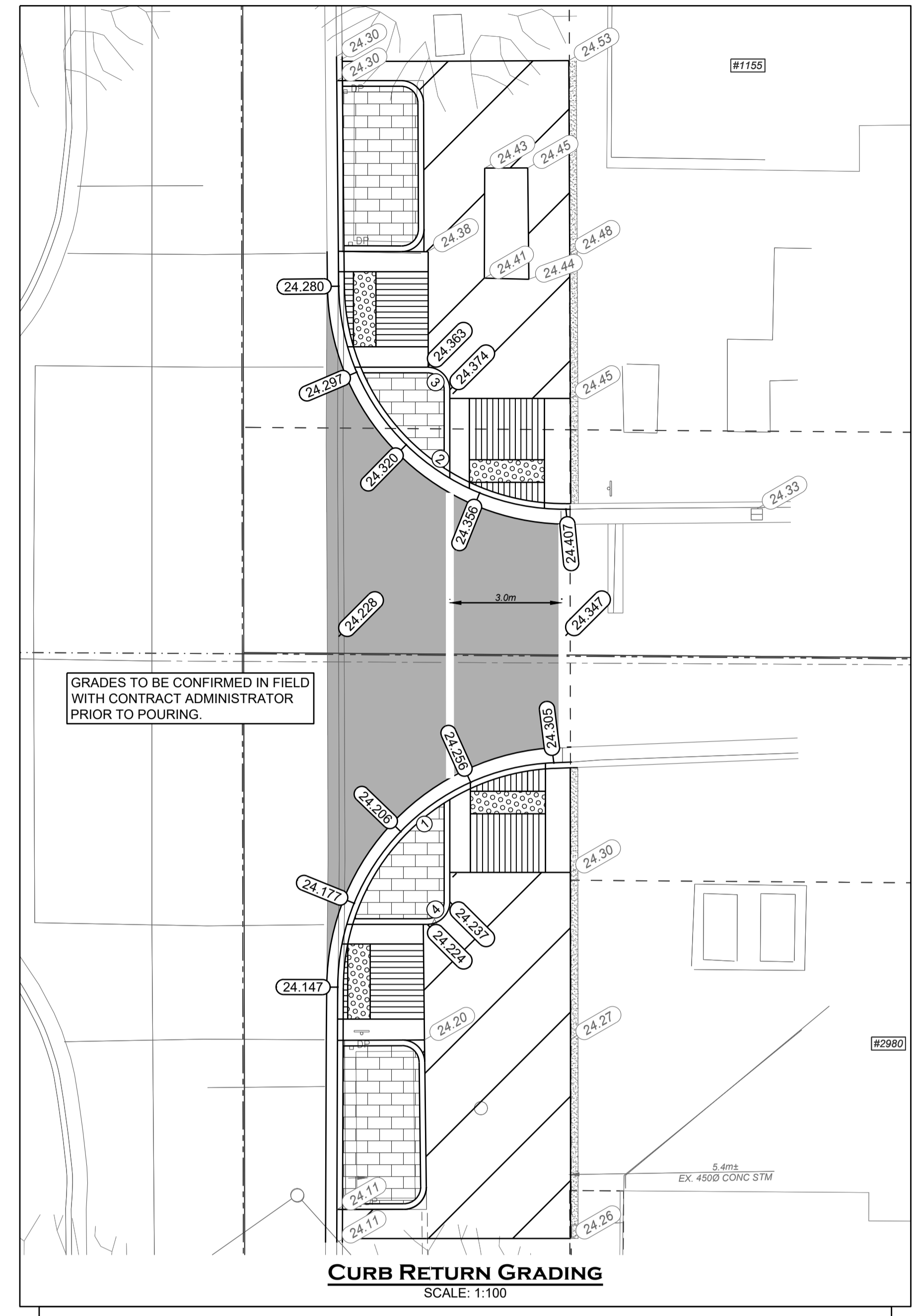
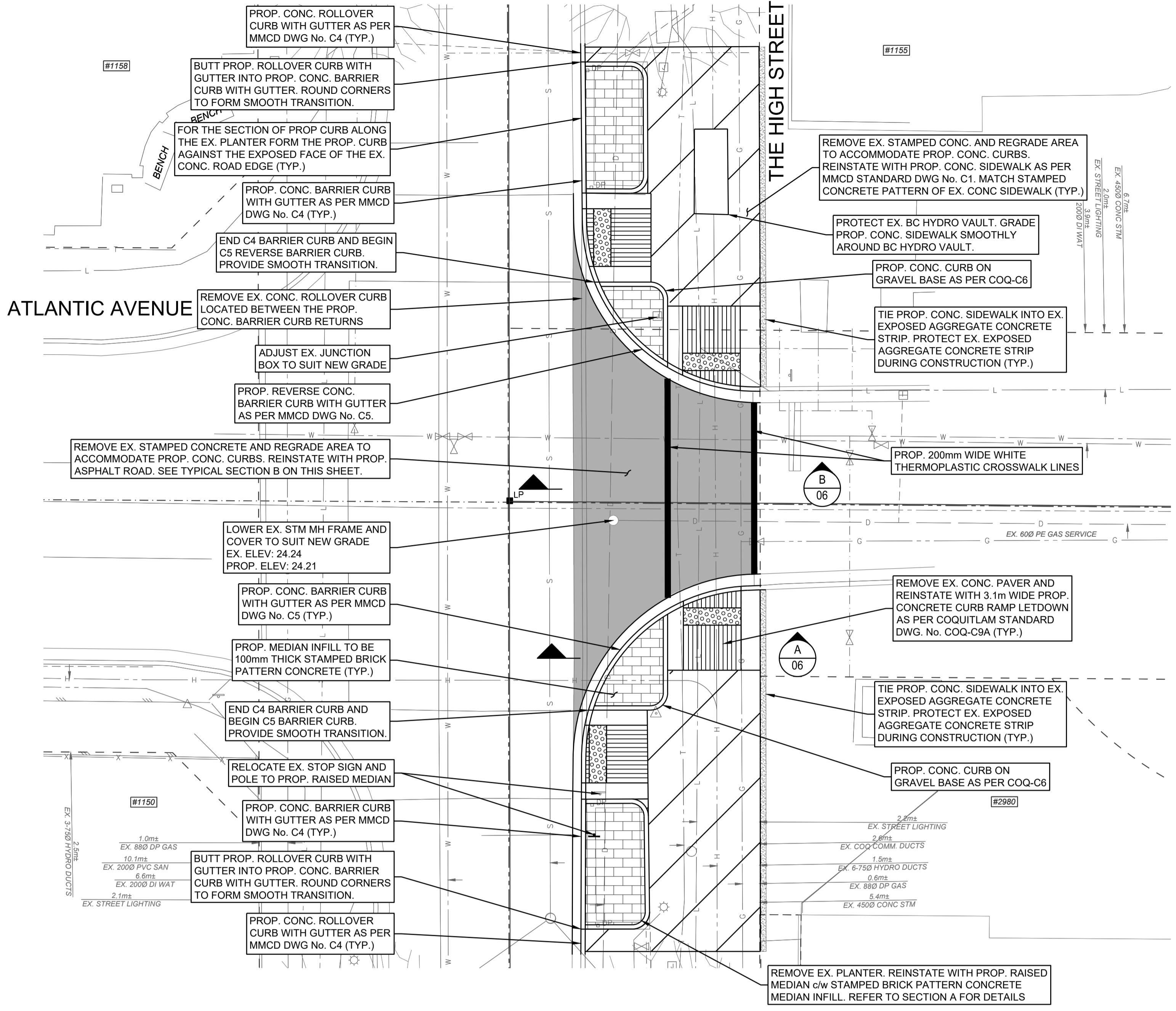
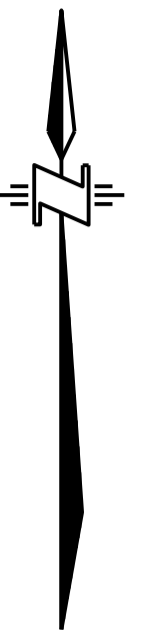
Project ATLANTIC AVE
 SIDEWALK REPLACEMENT
 Description ROADWORKS - PLAN
 File: 25-0704-R2
 REV. 0



EGBC PERMIT No. 1001128

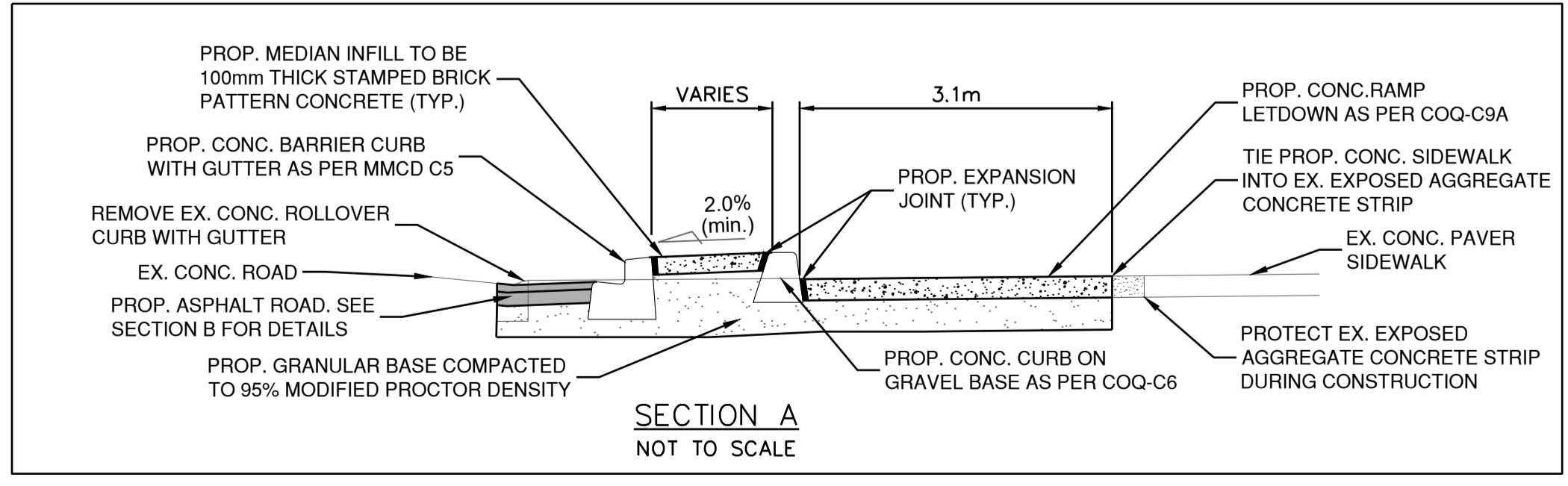
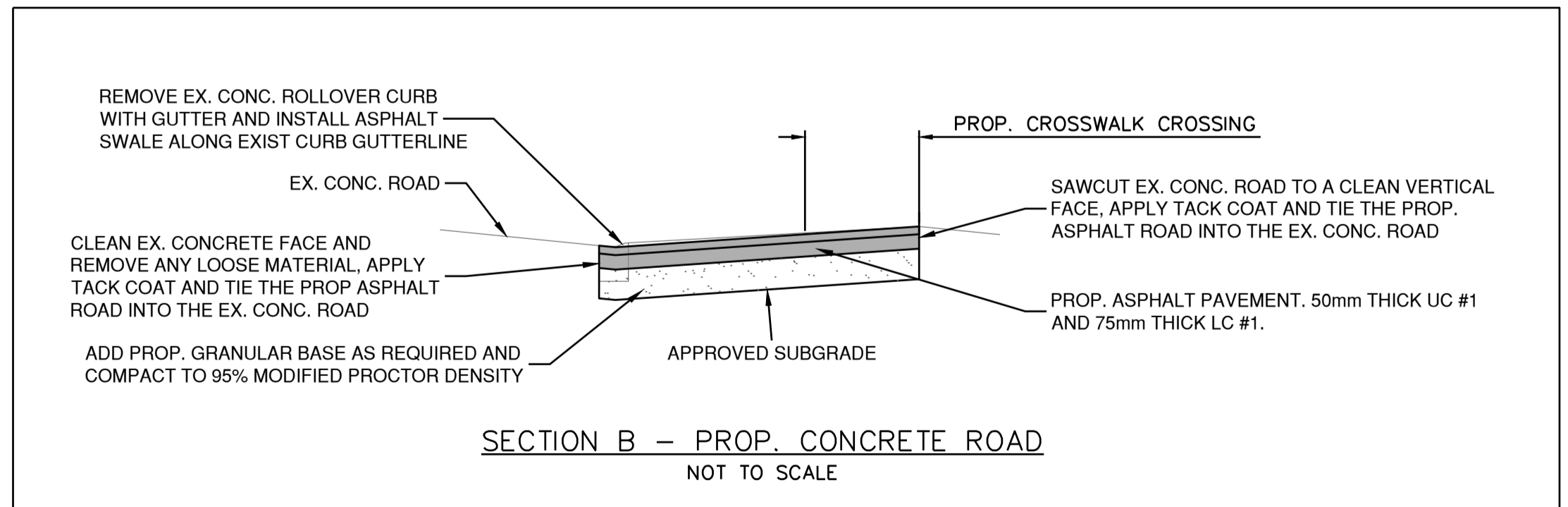
ISSUED FOR TENDER

BENCHMARK:
 MONUMENT 93H1001
 N: 5460550.827 E: 51617.196
 ELEV. = 17.923M (CVD28GVRD2018)



CURVE TABLE

CURVE No.	RADIUS	DELTA	LENGTH	BC NORTHING / EASTING	EC NORTHING / EASTING
1	6.000	87° 32' 09"	9.167	5460973.397 / 515041.690	5460979.375 / 515047.449
2	6.000	89° 59' 16"	9.424	5460992.070 / 515041.717	5460986.127 / 515047.772
3	0.600	90° 00' 00"	0.942	5460989.312 / 515044.677	5460989.912 / 515044.077
4	0.600	90° 00' 00"	0.942	5460975.070 / 515044.077	5460975.670 / 515044.677



0 1:100 4m
 0 1:10 0.4m
 DISCLAIMER: This drawing must not be reproduced without the written permission of R.F. Binnie & Associates Ltd. This drawing is not to be used for construction unless it is stamped "ISSUED FOR CONSTRUCTION" and signed by R.F. Binnie & Associates Ltd. It is the contractor's responsibility to ensure that he is in possession of the latest revision of this drawing.

Edge of pavement	Hydrant	Sanitary service	Hydro Guy Wire
Watermain and valve	Water air valve	Sanitary cleanout	Hydro Kiosk
Drainage sewer, MH	Water blowoff	Utility pole (joint pole)	Vegetation Canister
Drainage ditch	Water service	Utility pole with light	Vegetation Deciduous
Sanitary sewer, MH	Catch basin, top inlet	Streetlight, down	Vegetation Shrub
Sanitary forcemain	Catch basin, side inlet	Streetlight, post top	Survey Traverse Hub
Gasmain and valve	Catch basin, round	Comb signal pole	Survey Iron Pin
Hydro duct, MH	Drainage service	Traffic signal pole	Survey Lead Plug
Telephone duct, MH	Drainage cleanout	Junction box	Survey Monument

No.	Date	By	Revisions
0	2026-03-31	PP	ISSUED FOR TENDER

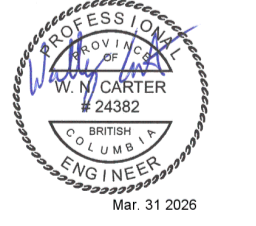
Design by	Date
PP	2026-01-15
Drawn by	Date
MK	2026-01-13
Checked by	Date
WC	2026-03-31
Approved by	Date
KD	2026-01-30

BINNIE
 The people behind your infrastructure.
 TEL 604 420 1721 BINNIE.com

Coquitlam
 Engineering & Public Works
 3000 Guildford Way, Coquitlam, B.C. V3B 7N2

Scale horz. 1:100 Scale vert. 1:10
 Sheet 06 of 06
 Eng. Project No. 25-0704

Project ATLANTIC AVE AND THE HIGH ST
 INTERSECTION IMPROVEMENT
 Description ROADWORKS - PLAN
 File: 25-0704-R3
 Rev. 0



EGBC PERMIT No. 1001128

ISSUED FOR TENDER