

# NORTHWEST BURKE VISION

## Information update #1



Burke Mountain is a significant growth area for the City of Coquitlam. In the past several years, the City has completed a number of neighbourhood plans that have guided – and continue to guide – current development on the mountain.

The City is now looking at the remaining undeveloped lands on Burke Mountain to ensure that they evolve in a measured, logical and planned way. To achieve this, the City has initiated the Northwest Burke Vision, to guide new growth for the northwest area of Burke Mountain.

The Northwest Burke Vision area is located directly north of the existing Upper Hyde Creek, Smiling Creek and Partington Creek neighbourhoods and south of Pinecone Burke Provincial Park.

Once complete, the Northwest Burke Vision will provide a high-level land use and servicing concept, as well as a phasing plan that will guide future planning and development over the next 30 years.

Developing the Northwest Burke Vision is anticipated to take a year and a half and this process will involve multiple opportunities for the public to get involved and have their say in the vision.

### PHASE 1

Context and Background Research

Spring and Summer 2014

**WE ARE HERE**



### PHASE 2

Ideas and Options

Fall and Winter 2014/2015



### PHASE 3

Final Draft Vision

Spring and Summer 2015

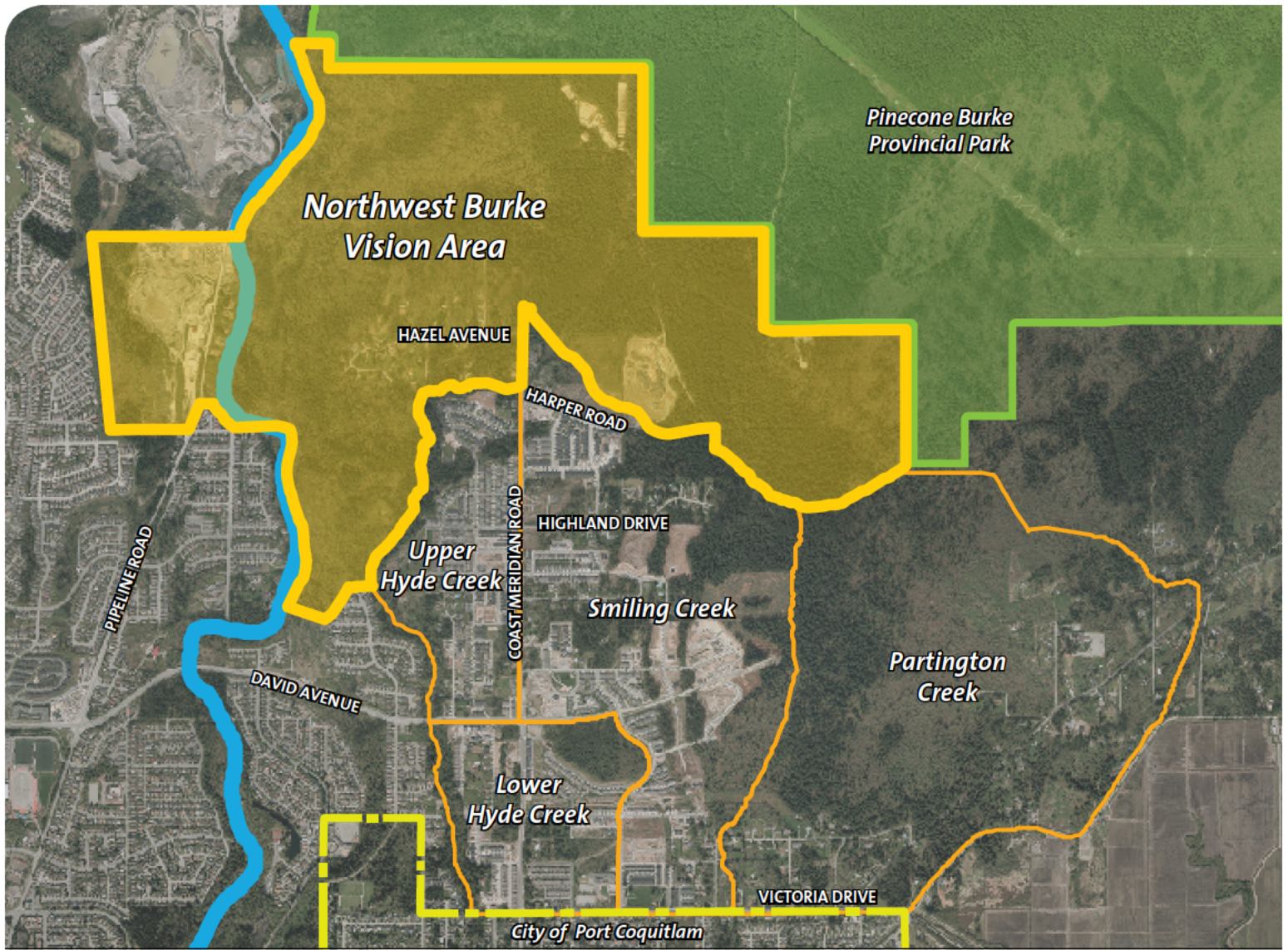


Interested in email updates?

Visit [coquitlam.ca/nbv](http://coquitlam.ca/nbv) and follow the links to sign up for the project email list.

Above all...

**Coquitlam**



## Quick Facts:

- The Vision area is almost 400 hectares (1000 acres)
- There are significant environmentally sensitive lands in the Vision area
- Steep slopes are common throughout the area
- The mountain is named for Irish statesman and author Edmund Burke
- The Port Coquitlam Hunting and Fishing Club has operated in the area since 1956
- The gravel quarries have been on Pipeline Road since the 1960's

## Connect with us:

Online		<a href="http://www.coquitlam.ca/nbv">www.coquitlam.ca/nbv</a>
email		<a href="mailto:planninganddevelopment@coquitlam.ca">planninganddevelopment@coquitlam.ca</a>
Phone		604.927.3430

coquitlam.ca |  @cityofcoquitlam |  /cityofcoquitlam

Above all...

**Coquitlam**