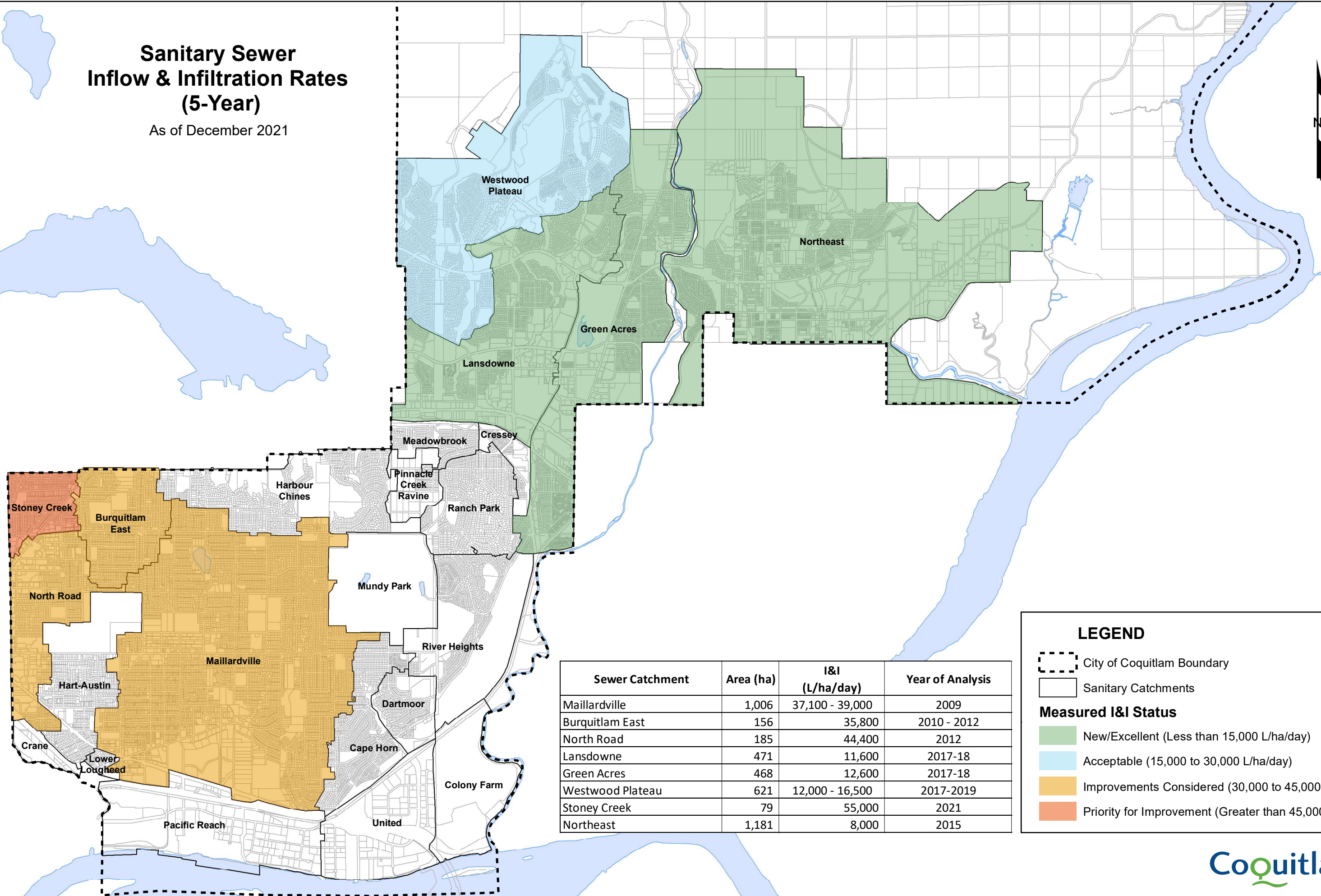


# Sanitary Sewer Inflow & Infiltration Rates (5-Year)

As of December 2021



| Sewer Catchment  | Area (ha) | I&I (L/ha/day)  | Year of Analysis |
|------------------|-----------|-----------------|------------------|
| Maillardville    | 1,006     | 37,100 - 39,000 | 2009             |
| Burquitlam East  | 156       | 35,800          | 2010 - 2012      |
| North Road       | 185       | 44,400          | 2012             |
| Lansdowne        | 471       | 11,600          | 2017-18          |
| Green Acres      | 468       | 12,600          | 2017-18          |
| Westwood Plateau | 621       | 12,000 - 16,500 | 2017-2019        |
| Stoney Creek     | 79        | 55,000          | 2021             |
| Northeast        | 1,181     | 8,000           | 2015             |

**LEGEND**

- City of Coquitlam Boundary
- Sanitary Catchments

**Measured I&I Status**

- New/Excellent (Less than 15,000 L/ha/day)
- Acceptable (15,000 to 30,000 L/ha/day)
- Improvements Considered (30,000 to 45,000 L/ha/day)
- Priority for Improvement (Greater than 45,000 L/ha/day)

