

## Schedule F

### PEDESTRIAN NETWORK PLAN

#### LEGEND

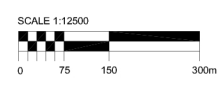
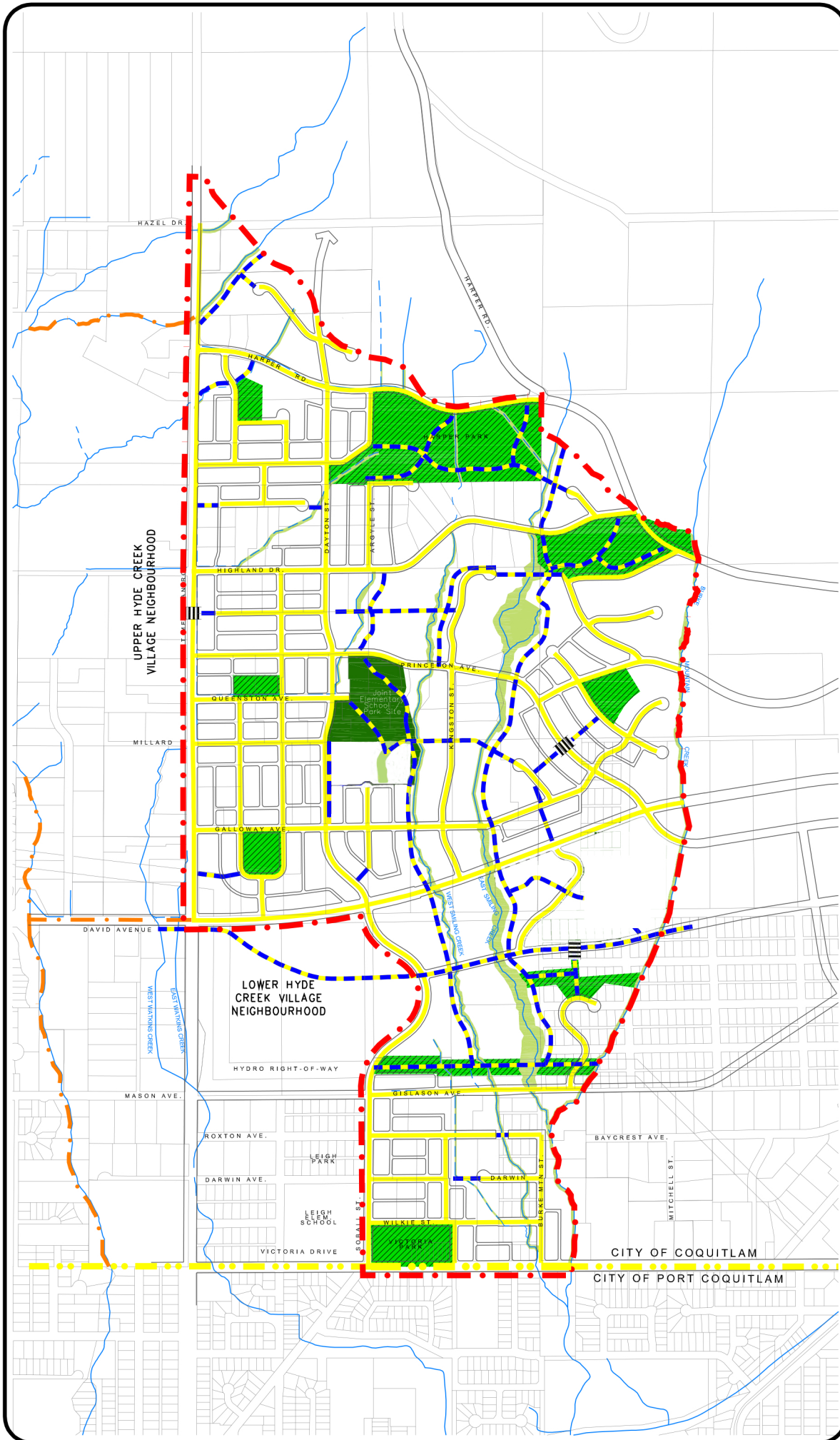
- Neighbourhood Plan Boundaries
- Upper and Lower Hyde Creek Village Neighbourhood Plan Boundaries
- Municipal Boundary
- Joint School / Park Site
- Neighbourhood Parks & Natural Open Space
- Environmentally Sensitive Areas
- Street Oriented Village Homes or Joint Middle School / Park Site

#### Pedestrian Network:

- On-Street Sidewalk (one or both sides)
- Public Pathways or Trails
- Potential Mid-block Pedestrian Crossings

#### Information Notes:

- 1 Local roads, lanes and servicing are illustrative, as final subdivision layout is subject to review by the City's Approving Officer.
- 2 Riparian areas along watercourses shall be protected in accordance with standards which Council may approve by bylaw and through any necessary authorization by senior levels of government.



SMILING CREEK  
NEIGHBOURHOOD PLAN  
C O Q U I T L A M B C

Adoption Date: July 31, 2006  
Amended: June 17, 2024